

48th ANNUAL

Franklin - Sterling

GEM & MINERAL SHOW

2004

SATURDAY, SEPTEMBER 25th • 9-6
SUNDAY, SEPTEMBER 26th • 10-5

Sponsored by



FRANKLIN, NEW JERSEY
The Fluorescent Mineral Capital of the World

STERLING HILL MINING MUSEUM
30 PLANT STREET
OGDENSBURG, NJ 07439-1126

Welcome to
The Sterling Hill Mine
in Ogdensburg, NJ



UNDERGROUND MINE TOURS

PASSAIC & NOBLE PIT

COLLECTING OPEN TO THE PUBLIC

During the Franklin-Sterling Hill Mineral Show, Sept. 26, 2004

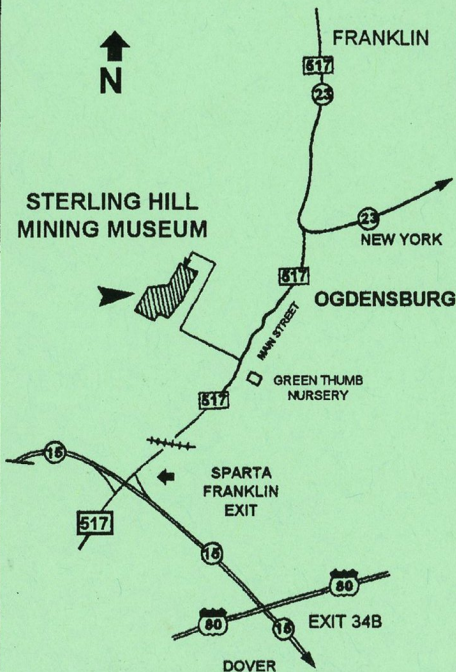
Open Sunday, 10 AM to 3 PM

Admission: \$10.00 per person, \$1 per pound after first 10 pounds

STERLING HILL GARAGE SALE

September 25 and 26

Saturday and Sunday, from 1 PM to 3 PM



MINE TOUR ADMISSION

| | |
|----------------------|------|
| ADULT | 9.50 |
| CHILDREN (UNDER 12) | 7.00 |
| SENIOR CITIZEN (65+) | 8.50 |

HOURS

OPEN 7 DAYS A WEEK
HOURS 10 AM TO 3 PM

TOURS AT 1:00 PM DAILY

& OTHER TIMES BY CHANCE
OR APPOINTMENT
FROM APRIL 1 TO NOV. 30

MARCH AND DEC., WEEKENDS ONLY
OTHER TIMES BY APPOINTMENT

MARCH AND DEC., WEEKENDS ONLY
OTHER TIMES BY APPOINTMENT

GROUP RATES AVAILABLE

For information call
(973)209-7212

FAX 973-209-8505

www.sterlinghill.org

COLLECTING AVAILABLE

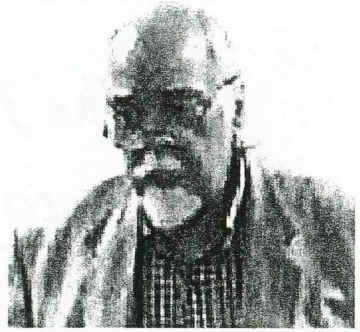
Last Sunday of each month, April to Nov. 10 AM to 3 PM

*The Franklin
Mineral Museum*

*would like to express
to the
Mineral Show Exhibitors
Dealers
Advertisers
and to all
who, through their dedication
have contributed their time and
talents to make our
Mineral Show a great success.*

DEDICATION

Paulus B. Moore



Paulus B. Moore was born November 24, 1940, in Stamford, Connecticut. He started collecting Franklin and Sterling Hill minerals since the age of 14 and has devoted much of his life and work expanding the mineralogical knowledge of this district. He studied at the Michigan Institute of Technology and earned his B.S. and M.S. degrees at the University of Chicago, where he was the second person in the country to receive a National Science Foundation predoctoral fellowship. He received his Ph.D. from the Royal Swedish Natural History Museum/Section for Mineralogy.

Dr. Moore is a Professor Emeritus at the University of Chicago, where he held various teaching positions since 1966, including Full Professor from 1969 to 1998. He has taught courses in mineralogy, chemical crystallography, and structural inorganic chemistry. His primary research activities have been the systematic investigation of mineral atomic arrangements, crystal chemistry, and mineral field paragenesis. He has published more than 200 professional papers in peer-reviewed journals, including 107 crystal structure analyses of mineral phases and the description of 35 new mineral species. Among his published research, Dr. Moore redefined calcium larsenite as esperite in 1965 and described gerstmannite and kraisslite as new species in 1977 and 1978, respectively. He also has authored several papers on fundamental hypotheses related to closest-packed structures of Franklin-Ogdensburg minerals.

Paulus Moore has extensive field experience in the Franklin Marble, the pegmatites of New England, the pegmatites of the South Dakota Black Hills, pegmatites of Germany and Sweden, Norway's Langesundfjord, and several iron and manganese deposits such as Laangban, Pajsberg, Nordmarken, Mossgruvan, Grythyttan, Tallgruvan, Jakobsberg, and Yxshoegruvan.

Paulus is also an assiduous researcher and collector of Rhopalocera (butterflies) and has netted (often literally) over 6,000 specimens. His travels have included butterfly-collecting expeditions to Peru, the Malay Peninsula, Papua-New Guinea, Belize, Nicaragua, Guadalcanal, and the British Solomon Islands.

Closer to home, he continues to study the minerals and geology of the Franklin Marble. Over the years, he has contributed numerous articles to *The Picking Table*, the journal of the Franklin-Ogdensburg Mineralogical Society (FOMS), and has spoken many times at mineralogical symposia, FOMS meetings, and other local events. In recognition of these outstanding accomplishments and contributions, we dedicate this showbook to Dr. Paulus B. Moore.

Fluorescent Minerals of Franklin and Sterling Hill, N.J.

A 2004 CHECK-LIST BASED ON OBSERVATIONS BY RICHARD C. BOSTWICK

FL = fluoresces; PH = phosphoresces; SW = shortwave ultraviolet radiation or UVC;
MW = midwave ultraviolet radiation or UVB; LW = longwave ultraviolet radiation or UVA.

These descriptions are necessarily brief and hence simplistic. The fluorescent color listed first is considered typical for that mineral. The wavelength or wavelengths listed are those under which the fluorescence is best seen. "FL red SW" means that the mineral typically fluoresces red, most strongly under shortwave UV., but *may* fluoresce weakly under MW and/or LW. Some less common fluorescent responses are listed in parentheses; it is not possible to list all of them here. Likewise, details of fluorescent intensity, saturation, and hue are omitted here, as that level of description is beyond the scope of this check-list.

While mineral fluorescence can be a powerful tool for rapid mineral identification, it should be used in conjunction with other identification techniques. Misidentifications based on fluorescence alone are common.

Albite: FL red SW

Aragonite: FL/PH white/cream LW (FL green SW)

Barite: FL pale yellow SW (Can FL yellow SW, MW, & LW, with or without PH)

Barylite: FL violet SW, bright under iron arc

Bassanite: FL/PH violet SW

Bustamite: FL cherry red LW

Cahnite: FL/PH cream SW

Calcite: FL orange-red SW with brief red-orange PH (Rarely FL many other colors, often PH,
Sometimes changes FL with UV wavelength)

Canavesite: FL/PH violet LW

Celestine: FL/PH cream LW (FL violet SW)

Cerussite: FL yellow LW

Chabazite: FL green SW

Charlesite: FL pale blue SW, but usually
coated with cream-FL gypsum

Chondrodite: FL yellow, yellow-orange SW

Clinochrysoilite: FL "tan" (orange-yellow) SW

Clinohedrite: FL/PH orange SW

Corundum: FL cherry-red LW

Cuspidine: FL orange-yellow SW with brief orange-red PH; MW FL has violet tint added.

Datolite: FL cream SW

Diopside: FL blue SW, FL pale yellow MW/LW

Dolomite: FL red SW

Dundasite: FL pale yellow SW/MW/LW

Dypingite: FL/PH blue SW/MW/LW

Epsomite: FL cream LW, violet MW

Esperite: FL lemon-yellow SW, faint PH

Fluoborite: FL cream SW

Fluorapatite: FL orange/"peach," SW in the ore., violet-blue MW in the marble.

Fluorapophyllite: FL/PH white SW

Fluorite: Variable! FL/PH blue-green SW/MW/LW; FL/PH violet-blue SW/MW/LW; FL/PH white to pale yellow SW, violet-blue MW/LW; FL/PH pale yellow SW, greenish-yellow MW, green LW.

Guerinite: FL/PH pale yellow SW/MW/LW

Gypsum: FL/PH white, pale yellow, pale blue SW/MW/LW

Genthelvite: FL green LW (best)/SW/MR

Hardystonite: FL violet to violet-blue SW/MW/LW

Hedyphane: FL orange or cream, MW

Hemimorphite: FL/PH pale yellow to white SW/MW/LW, also FL green SW/LW and blue SW.

Hexahydrite: FL/PH white SW/MW/LW

Hodgkinsonite: FL weak cherry red MW/LW

Humite: rarely FL pale yellow SW

Hyalophane: FL red SW
Hydrotaicite: FL cream LW
Hydroxyapophyllite: FL/PH weak white SW
Hydrozincite: FL blue SW w/pale yellow PH and, FL/PH pale yellow MW/LW
Johnbaumite: FL orange SW
Junitoite: FL pale yellow LW
Magnesiohornblende: FL greenish-blue SW
Manganaxinite: FL red SW, faint PH
Margarite: FL weak white ("gray") SW/MW/LW
Margarosane: FL blue & red SW, red & rarely orange MW, weak red/orange LW
Marialite: FL yellow SW and pink LW
McAllisterite: FL cream SW
Meionite: FL pinkish-red or orange-yellow SW/MW,
orange-yellow LW
Meta-ankoleite: FL green SW
Metalodevite: FL green SW
Microcline: FL blue or red SW
Minhillite: FL violet SW, bright violet-blue MW, pale yellow LW
Monohydrocalcite: FL green SW + white PH
Nasonite: FL pale yellow SW/MW
Newberyite: FL cream SW
Norbergite: FL yellow SW, less bright MW
Pargasite: FL greenish-blue SW
Pectolite: FL/PH orange SW/LW, less bright MW
Pharmacolite: FL/PH white SW/MW/LW
Phlogopite-1M: FL yellow SW
Picropharmacolite: FL/PH white LW
Powellite: FL yellow SW/MW
Prehnite: FL orangeish pink SW
Quartz: variable! FL yellow, pale orange, or green SW; FL pale orange, yellow MW.
Roebingite: FL red SW with brief
red-orange PH
Samfowlerite: FL weak red SW
Scheelite: FL orange-yellow SW/MW (blue SW)
Smithsonite: FL/PH pale yellow SW/MW/LW
Sphalerite: FL, PH orange, yellow-orange,
orange-yellow, blue LW/MW, weaker SW
Spinel: FL cherry-red LW
Starkeyite: FL/PH white SW/MW/LW
Strontianite: FL violet SW
Talc: FL yellow SW/MW/LW
Thomsonite: FL pale yellow SW
Tilasite: FL yellow SW
Titanite: FL yellow-orange SW
Tremolite: FL blue SW (yellow LW)
Turneaureite: FL orange SW
Uranospinite: FL green SW
Uvite: FL orange-yellow SW
Willemite: FL/PH green SW (FL, PH yellow, greenish-yellow, orange, pale blue SW)
Wollastonite: FL/PH orange to yellow SW
Xonotlite: FL/PH violet SW/LW/LW
Zincite: FL yellow SW/MW/LW
Zircon: FL orange SW/MW
Znucalite: FL green SW/MW

MINERAL SPECIES FOUND AT FRANKLIN - STERLING HILL, NEW JERSEY

Mineral species list updated Fall 2003

Courtesy of the Franklin Mineral Museum Inc.

- o Acanthite
- o Actinolite
- o Adamite
- o Adelite
- o Aegirine
- o Akrochordite
- o Albite
- o Allactite
- o Allanite-(Ce)
- o Alleghanyite
- o Almandine
- o Analcime
- o Anandite
- o Anatase
- o Andradite
- o Anglesite
- o Anhydrite
- o Annabergite
- o Anorthite
- o Anorthoclase
- o Antlerite
- o Aragonite
- o Arsenic
- o Arseniosiderite
- o Arsenopyrite
- o Atacamite
- o Augite
- o Aurichalcite
- o Aurorite
- o Austinite
- o Azurite

- o Bakerite
- o Bannisterite
- o Barite
- o Barium-pharmacosiderite
- o Barylite
- o Barysilite
- o Bassanite
- o Baumhauerite
- o Bementite
- o Berthierite
- o Bianchite
- o Biotite (series name)
- o Birnessite
- o Bornite
- o **Bostwickite**

- o Brandite
- o Breithauptite
- o Brochantite
- o Brookite
- o Brucite
- o Bultfonteinite
- o Bustamite

- o Cahnite
- o Calcite
- o Canavesite
- o Carrollite
- o Caryopillite
- o Celestine
- o Celsian
- o Cerussite
- o Chabazite-Ca
- o Chalcocite
- o Chalcophanite
- o Chalcopyrite
- o Chamosite
- o **Charlesite**
- o Chloritoid
- o **Chlorophoenicite**
- o Chondrodite
- o Chrysocolla
- o **Cianciulliite**
- o Clinocllore
- o Clinochrysotile
- o Clinoclase
- o Clinohedrite
- o Clinohumite
- o Clinozoisite
- o Clintonite
- o Conichalcite
- o Connellite
- o Copper
- o Corundum
- o Covellite
- o Cryptomelane
- o Cummingtonite
- o Cuprite
- o Cuprostitite
- o Cuspidine
- o Cyanotrichite

- o Datolite

- o Descloizite
- o Devilline
- o Digenite
- o Diopside
- o Djurleite
- o Dolomite
- o Domeykite
- o Dravite
- o Duftite
- o Dundasite
- o Dypingite

- o Edenite
- o Epidote
- o Epsomite
- o Erythrite
- o Esperite
- o Euchroite
- o Eveite

- o Fayalite
- o Feitknechtite
- o Ferrimolybdite
- o Ferristilpnomelane
- o Ferro-actinolite
- o Ferro-axinite
- o Ferrostilpnomelane
- o Flinkite
- o Fluckite
- o Fluoborite
- o Fluorapatite
- o Fluorapophyllite
- o Fluorite
- o Fluoroedenite
- o Forsterite
- o Fraipontite
- o **Franklinfurnaceite**
- o Franklinite
- o **Franklinphilite**
- o Friedelite

- o Gageite-itc
- o Gageite-2M
- o Gahnite
- o Galena
- o Ganomalite
- o Ganophyllite
- o Genthelvite
- o Gersdorffite
- o **Gerstmannite**
- o Glaucochroite
- o Glaucodot

- o Goethite
- o Gold
- o Goldmanite
- o Graphite
- o Greenockite
- o Grossular
- o Groutite
- o Guerinite
- o Gypsum

- o Haidingerite
- o Halotrichite
- o Hancockite
- o **Hardystonite**
- o Hastingsite
- o **Hauckite**
- o Hausmannite
- o Hawleyite
- o Hedenbergite
- o Hedyphane
- o Hellandite-Y
- o Hematite
- o Hemimorphite
- o **Hendricksite-IM**
- o Hercynite
- o Hetaerolite
- o Heulandite-Na
- o Hexahydrite
- o **Hodgkinsonite**
- o **Holdenite**
- o Huebnerite
- o Humite
- o Hyalophane
- o Hydrohetaerolite
- o Hydrotaalcite
- o Hydroxyapophyllite
- o Hydrozincite

- o Illite
- o Ilmenite

- o Jacobsite
- o **Jarosewichite**
- o Jerrygibbsite
- o Johannsenite
- o **Johnbaumite**
- o Junitoite

- o Kaolinite
- o Kentrolite
- o **Kittatinnyite**
- o Koettigite

- o **Kolicite**
- o **Kraisslite**
- o Kutnahorite

- o Larsenite
- o Laumontite
- o **Lawsonbauerite**
- o Lead
- o Legrandite
- o **Lennilenaepite**
- o Leucophoenicite
- o Linarite
- o Liroconite
- o Lizardite
- o Loellingite
- o Loseyite

- o Magnesiornblende
- o Magnesoriebeckite
- o Magnetite
- o Magnussonite
- o Malachite
- o Manganaxinite
- o Manganberzeliite
- o Manganese-hoernesite
- o Manganhumite
- o Manganite
- o Manganocummingtonite
- o Manganosite
- o Manganpyrosmalite
- o Marcasite
- o Margarite
- o Margarosanite
- o Marialite
- o Marsturite
- o Mcallisterite
- o **Mcgovernite**
- o Meionite
- o Meta-ankoleite
- o Metalodevite
- o Metazeunerite
- o **Mg-chlorophoenicite**
- o Microcline
- o Mimetite
- o **Minehillite**
- o Molybdenite-2H
- o Monazite-(Ce)
- o Monohydrocalcite
- o **Mooreite**
- o Muscovite-1M

- o Nasonite

- o Natrolite
- o **Nelenite**
- o Neotocite
- o Newberyite
- o Niahite
- o Nickeline
- o Nontronite
- o Norbergite

- o Ogdensburgite
- o Ojuelaite
- o Oligoclase
- o Orthochrysotile
- o Orthoclase
- o Orthoserpierite
- o Otavite

- o **Parabrandtite**
- o Paragonite
- o Pararammelsbergite
- o Pararealgar
- o Parasymphesite
- o Pargasite
- o Pectolite
- o Pennantite-Ia
- o **Petedunnite**
- o Pharmacolite
- o Pharmacosiderite
- o Phlogopite-1M
- o Picroparmacolite
- o Piemontite
- o Powellite
- o Prehnite
- o Pumpellyite-(Mg)
- o Pyrite
- o Pyroaurite
- o Pyrobelonite
- o Pyrochroite
- o Pyrophanite
- o Pyroxmangite
- o Pyrrhotite

- o Quartz

- o Rammelsbergite
- o Realgar
- o **Retzian-(La)**
- o **Retzian-(Nd)**
- o Rhodochrosite
- o Rhodonite
- o Richterite
- o Rouaite

- o Roebbingite
- o Romeite
- o Rosasite
- o Roweite
- o Rutile
- o Safflorite
- o **Samfowlerite**
- o Sarkinite
- o Sauconite
- o Schallerite
- o Scheelite
- o Schorl
- o **Sclarite**
- o Scorodite
- o Seligmannite
- o Sepiolite
- o Serpierite
- o Siderite
- o Sillimanite
- o Silver
- o Sjogrenite
- o Skutterudite
- o Smithsonite
- o Sonolite
- o Spangolite
- o Spessartine
- o Sphalerite
- o Spinel
- o Starkeyite
- o Sterlinghillite
- o Stibnite
- o Stilbite-Na
- o Stilbite -Ca
- o Strontianite
- o Sulfur
- o Sussexite
- o Synadelphite
- o Synchysite-Ce

- o Tremolite
- o Turneaureite
- o Unnamed amphibole
- o Uraninite
- o Uranophane
- o Uranospinite
- o Uvite
- o Vesuvianite
- o Villyaellenite
- o **Walkkildellite**
- o **Wawayandaite**
- o Wendwilsonite
- o Willemite
- o Wollastonite
- o Woodruffite
- o Wulfenite
- o Wurtzite
- o Xonotlite
- o Yeatmanite
- o Yukonite
- o Zinalsite
- o Zincite
- o Zinkenite
- o Zircon
- o Znuccalite

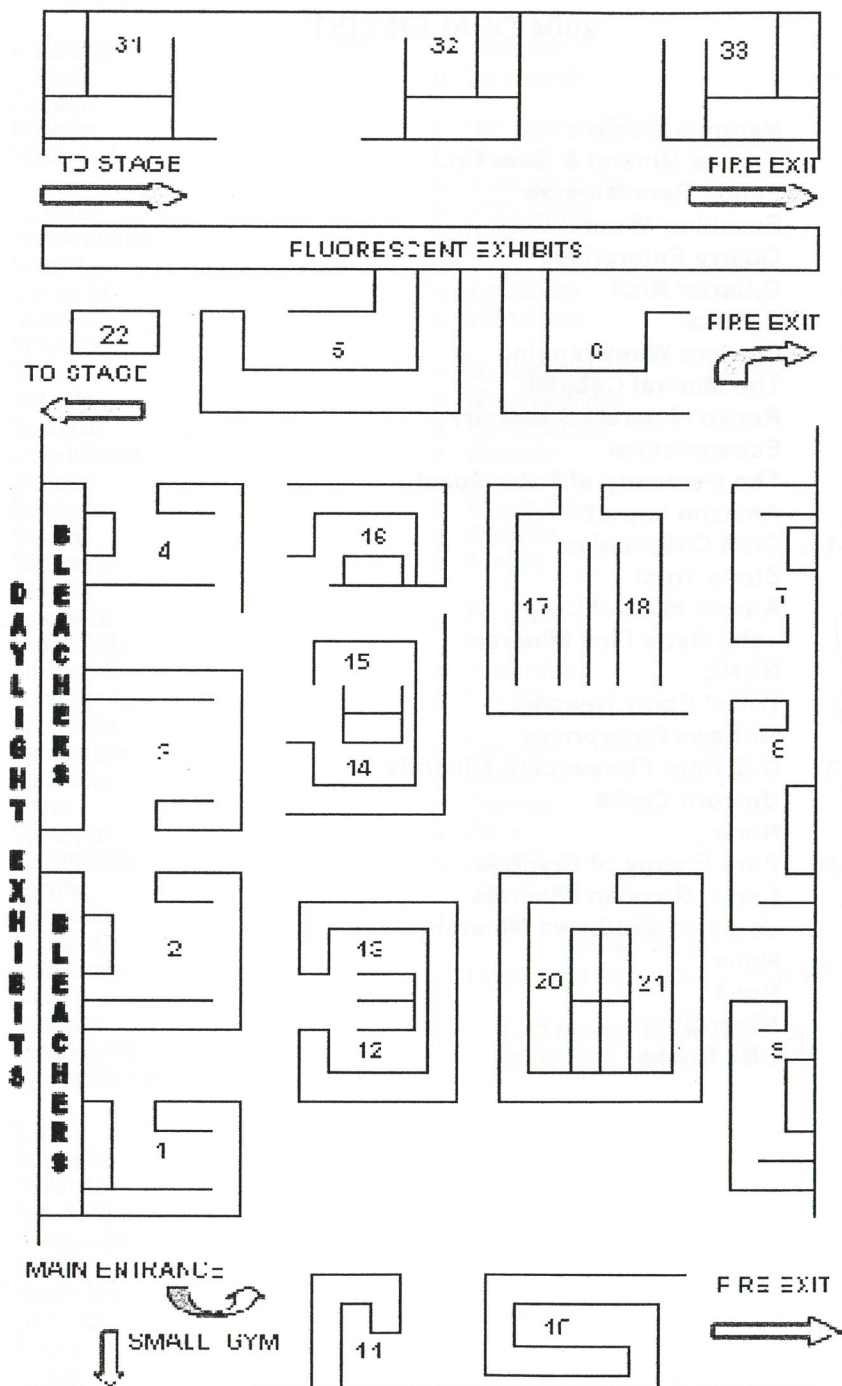
Minerals Unique to
Franklin and Sterling Hill = 33 (**bold**)

Total Mineral Species found at
Franklin and Sterling Hill = 360

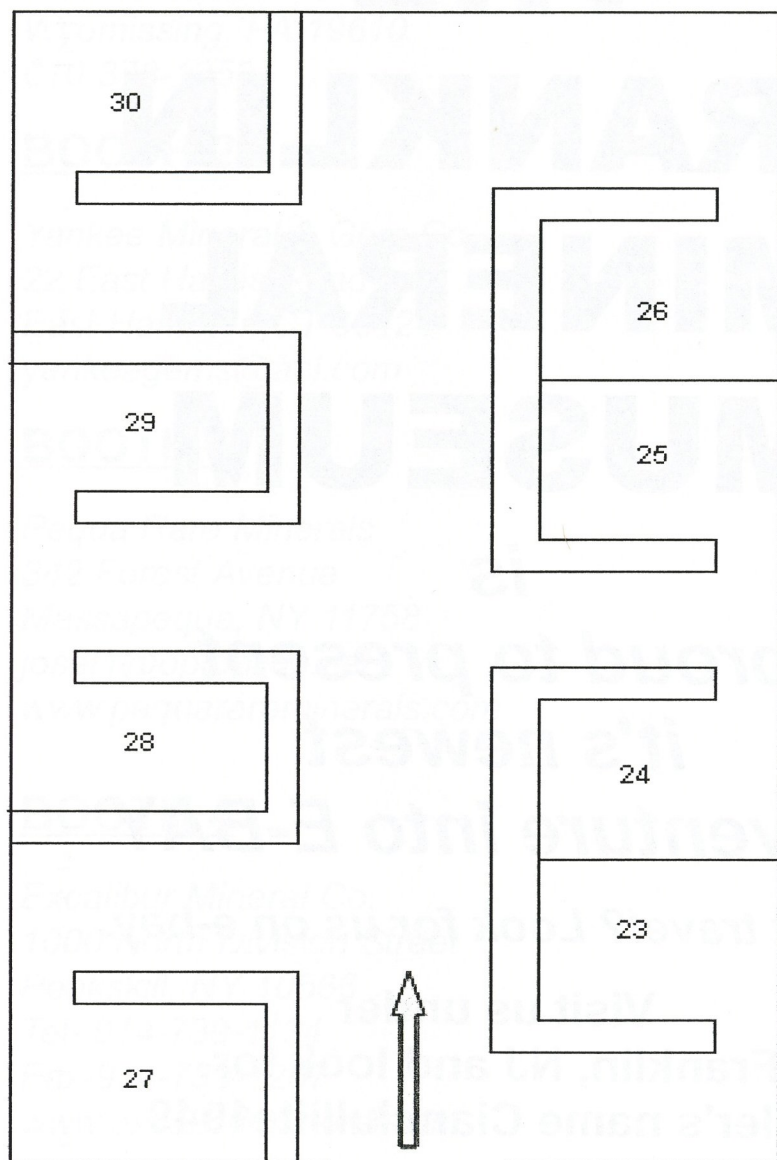
- o Talc
- o Tennantite
- o Tephroite
- o Tetrahedrite
- o Thomsonite
- o Thorite
- o Thortveitite
- o Thorutite
- o Tilasite
- o Titanite
- o Todorokite
- o **Torreyite**

2004 DEALER LIST

1. Nature's Window
2. Yankee Mineral & Gem Co.
3. Pequa Rare Minerals
4. Excalibur Mineral Co.
5. Quarry Enterprises
6. C.Carter Rich
7. Celinka
8. Fowlers Wirewrapping
9. The Mineral Cabinet
10. Rocko Minerals & Jewelry
11. Eccentricities
12. The Gemmery of Palm Coast
13. Amazon Imports
- 14-15. CCM Collectibles
16. Stone Trust
17. Aurora Mineral Corp
18. John Betts Fine Minerals
19. NONE
20. Willis' Earth Treasure
21. Mohawk Enterprises
- 22-31 C.B.Ward Fluorescent Minerals
23. Unicorn Crafts
24. None
- 25-26 Pure Energy of Crystals
27. Exotic Russian Minerals
28. Veronica Matthews Minerals
29. None
30. None
32. Miner Shop
33. GSL Rocks



SMALL GYM



ENTRANCE

THE FRANKLIN MINERAL MUSEUM

is

*proud to present
it's newest
adventure into E-BAY*

Can't travel? Look for us on e-bay.

Visit us under
Franklin, NJ and look for
Seller's name Cianciulliite1949

We are also looking to purchase
minerals for our gift shop sale area.

BOOTH 1

Nature's Window
PO Box 6049
Wyomissing, PA 19610
610-373-1253

BOOTH 2

Yankee Mineral & Gem Co.
22 East Hayes Road
East Hampton, CT 06424
yankeegems@aol.com

BOOTH 3

Pequa Rare Minerals
342 Forest Avenue
Massapequa, NY 11758
josef1@optonline.net
www.pequarareminerals.com

BOOTH 4

Excalibur Mineral Co.
1000 North Division Street
Peekskill, NY 10566
Tel- 914-739-1134
Fax-914-739-1257
www.excaliburmineral.com

BOOTH 5

Quarry Enterprises
PO Box 22
Northvale, NJ 07647
201-768-9364

BOOTH 6

C. Carter Rich
PO Box 69
Aldie, VA 20105
703-327-6373

BOOTH 7

Celinka
1522 Walnut Ave
Bohemia, NY 11716
631-567-3342

BOOTH 8

Fowlers Wirewrapping
PO Box 506
Marlboro, NH 03455
216-440-7687

BOOTH 9

*The Minearl Cabinet
PO Box 814
New Providence, NJ 07974
908-464-7235*

BOOTH 10

*Rocko Minerals & Jewelry
438 Southside Spur
Margaretville, NY 12455
Tel- 845-586-3837
Fax- 845-586-1975
rocko@catskill.net*

BOOTH 11

*Eccentricities
Gemstones & Jewelry & Collectibles
518-797-5169
peggyeccentricities@msn.com*

BOOTH 12

*The Gemmery of Paint Coast
2 Wood Shaw Lane
Palm Coast, FL 32164
386-445-9030*

BOOTH 13

*Amazon Imports
PO Box 58
Williston Park, NY 11596
800-888-GEMS
amazonlmp@aol.com*

BOOTH 14-15

*CMM Collectibles
PO Box 160
Highspire, PA 17034*

BOOTH 16

*Stone Trust
86 Washburn Rd
Canton, CT 06018*

BOOTH 17

*Aurora Mineral Corp
679 S Ocean Ave
Freeport, NY 11520
Tel- 516-623-3800
Fax-516-623-0197
www.auroramineral.com *The Mineral Cabinet**

BOOTH 18

John Betts Fine Minerals
215 West 98 street No 2 F
New York, NY 10025
212-678-1942
jhbny@aol.com

BOOTH 19

NONE

BOOTH 20

Willis' Earth Treasures
309 Prospect St
Stewartsville NJ 08886
908-859-0643

BOOTH 21

Mohawk Enterprises
1334 Old Trail Road
Johnstown, NY 12095
518-762-1338
val@superior.net

BOOTH 22 & 31

C.B. Ward Fluorescent Minerals
4071 NC 80
Bakersville, NC 28705
Tel-828-688-6904
Fax-828-688-6927
www.fluorescentminerals.com
cbward@fluorescentminerals.com

BOOTH 23

Unicorn Crafts
1220 Broadway
Suite 809
New York, NY 10001
212-868-1828

BOOTH 24

None

BOOTH 25

Pure Energy of Crystals
37 Fort Hill Ave.
Lowell, MASS 01852

BOOTH 27

*Exotic Russian Minerals
Moscow, Russia*

BOOTH 28

*Veronica Matthews Minerals
PO Box 588
Westbrook, CT 06498
Fax & local 860-399-0063
1-800-284-2499
vmattmin@att.net*

BOOTH 29

None

BOOTH 30

None

BOOTH 32

Miner Shop
15583 SW 151 st
Miami, FL 33196
305-255-9601
www.minershop.com
markcole@minershop.com

BOOTH 33

GSL Rocks
4726 Porter Center Rd
Lewiston, NY 14092
716-754-9729
gslrocks@aol.com

GILMAN'S

726 Durham St-PO Box M Hellertown, PA 18055
Phone 610-838-8767-Fax 610-838-2961
E-mail-info@lostcave.com

Your Complete Supply House
Lapidary & Jewelry Making Tools, Machines, Equipment & Supplies,
Rock Picks, Hammers, Chisels & Rock Hunting Equipment, Findings,
Cut Stones, Beads & Beading Supplies, Books on Related Subjects

We Are Looking Forward to Seeing You At The

FRANKLIN DINER

The Carroll Family

Route 23

Franklin, NJ

GARTENBERG ASSOCIATES, LLC

PROFESSIONAL ENGINEERING & PLANNING

**PROVIDING CONSULTING ENGINEERING
SERVICES FOR ABANDONED MINE REMEDIATION
MINE DELINEATION & CLOSURE PLANS**

BUILDING & SITE FORENSIC ENGINEERING

CONSTRUCTION LITIGATION SUPPORT & TESTIMONY

REMEDIAL DESIGN, SPECIFICATIONS & PROJECT MANAGEMENT

P.O. BOX 243-CONVENT STATION-NEW JERSEY-07961


**973-359-0660-FAX973-359-0659-INFO@njmINES.US
SUPPORT THE Franklin Mineral Museum Color Book Fund**

**Need Some
Financial Direction?
Talk to a Neighbor.**



SUSSEX BANK

1-800-511-9900

Member FDIC • Equal Opportunity Lender • Equal Housing Lender 

COMPLIMENTS

OF

CHESTER & MARY BRIDGET LEMANSKI

2 Rowe Place, Franklin, NJ 07416

973-827-9080

Harry E. Watt Agency

For All your Insurance Needs

Personal-Business

Marie J. Scott

Looking Forward to see you at the show.

Steven M. Kuitems D.M.D.

Collector of Franklin Minerals

908-630-0033

14 Fox Hollow Trail

Bernardsville, NJ 07924

SUSSEX MOTEL

Heated Pool ★ Year-Round Temperature Control

Cable T.V. ★ Efficiency Units



Route 23, Sussex
New Jersey 07461

Hotel Rolling Hills



Comfortable Surroundings

Cable t.v. Telephones

127 Route 23

Sussex, NJ 07461

☎ (973) 875-1270

A Mile Deep and Black as Pitch



An Oral History of the
Franklin and Sterling Hill Mines

Carrie Papa

**Come to our book
signing.**

At the Show!

Sept. 25 + 26

Sat. 11 AM - 1 PM

Sun. 1 PM - 3 PM



The World Leader in Ultraviolet Lamps and Accessories....

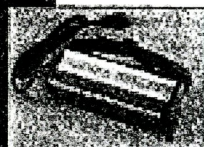
For more than three decades, Raytech has made itself present in the manufacturing of quality ultraviolet lamps and accessories serving a population, which includes the hobbyist, educational establishments, and rock and mineral collectors. Our stance on providing quality ultraviolet products to the world has not departed over three decades and will continue to provide the same quality that is expected in the new millennium and beyond. Let Raytech "light" your way to find the best lamp to suit all your ultraviolet needs. Quality, ingenuity, and customer service are words that best describe Raytech and all the product lines they represent. Contact Raytech at (800) 243-7163 for quotations or technical assistance. Raytech products are sold exclusively through dealers and distributors nationwide/worldwide.

Compact Ultraviolet

New Design!



Model 1



Model 7



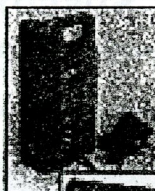
Model 8



Model 20

Features a complete line of AC powered lamps ranging from 4-watts to 12-watts of UV power. New design allows for easy handling with convenient adjustable carry strap.

Portable Ultraviolet



Model P2



Versalume

Portable UV lamps by Raytech to handle a myriad of applications. Features the Versalume, and RS-2 rechargeable lamps.

Display Ultraviolet

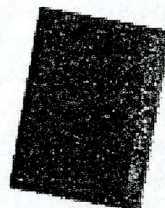
New Design!



Model 18 and
Model 218



Includes Models 18 & 218. These economical units are a must for any display case. These two models cover a wide area with brilliant light.



Contact Raytech
for a Copy of
Our New Catalog!

**New! Midrange UV Lamps now available...
Contact Raytech for full details and models available.**

Raytech Industries A Division of Lyman Products 475 Smith Street, Middletown CT 06457
Phone 860-632-7000, Fax 860-632-1699

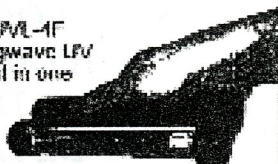
Ultraviolet Lamps

Largest Selection Including the World-Famous Mineralight[®] Series UV Lamps

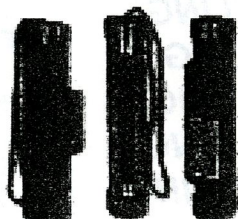


311V lamp has three ultraviolet wavelengths in one unit (4, 6 or 8 watts)

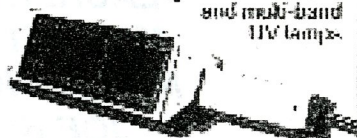
Mini 4-watt UVL-4F includes longwave UV and flashlight in one



Mini 4-watt battery operated longwave, shortwave and multi-band UV lamps

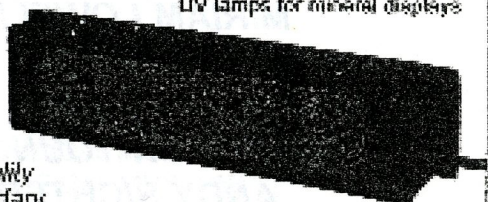


Compact 4-watt and handheld 6-watt longwave, shortwave and multi-band UV lamps



Rechargeable and portable longwave, shortwave and multi-band 6-watt UV lamps

High performance 25-watt midrange, longwave, shortwave and multi-band UV lamps for mineral displays



Providing the finest quality ultraviolet lamps to lapidary customers since 1932.

Why take a chance? All UVP products are specially certified to IEC/ANSI standards in the US/Canada.

Call (800) 452-6788 today for a catalog or a distributor near you.

UVP

UVP, Inc., Upland, CA
Tel: (909) 498-2711 Fax: (909) 946-3587
E-Mail: uvp@uvp.com Internet: uvp.com

2004 BOOSTER LIST

**JOHN BAUER
LOUISE BAUER
RICHARD BIELING
TIM BYERS
BEVERLY BYERS
DONA BYERS
CAROL CIANCIULLI
JOHN CIANCIULLI
GEORGE ELLING
FERNE ELLING
LAUREN ELLING
MICHAEL ELLING
MARIANNE ELLING
JOE KLITSCH
DOREEN LONGO
JOE LONGO
LEE LOWELL
MIRIAM LOWELL
CLAUDE POLI
FRED YOUNG
SHARON YOUNG
ANDY RICHTER**

48TH ANNUAL
FRANKLIN-STERLING HILL MINERAL SHOW
EXHIBITORS

FLUORESCENT EXHIBITS

RICHARD BOSTWICK
RICHARD EISENMAN
RALPH KOVACH
STEVEN KUITEMS
MARK BOYER
PETE MACKEY
DAVID SELEM
DENIS DE ANGELIS
GREG LEZINSKI
CLAUDE POLI

DAYLIGHT EXHIBITS

STEVEN KUITEMS
RAY LATAWIEC
RICHARD HAUCK
ROBERT HAUCK
MARK BOYER
PHILLIP PRESSON
JOHN KOLIC
PETE MACKEY
ROMAN GAUFMAN
JOHN EBNER-MICRO MOUNTS

INSTITUTIONS

FRANKLIN MINERAL MUSEUM
HARVARD UNIVERSITY GEOLOGICAL MUSEUM**
RUTGERS UNIVERSITY GEOLOGICAL MUSEUM**
STERLING HILL MINING MUSEUM

**EXHIBITS AT FRANKLIN MINERAL MUSEUM

Help preserve one of the world's great mineral collecting sites . . .

The Buckwheat Pit
and
Trotter Mineral Dump
Franklin, New Jersey

Reginald Phillips

8 A.M. – 4:30 P.M. • Mon. – Fri.
8 A.M. – 12 Noon • Sat.

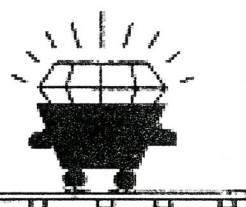
F & R ASSOCIATES, LLC

Historic Land Preservation
Franklin Minerals

Steven Phillips
(973) 827-0945

128 Lake Poehung Road
Sussex, N.J. 07461

*We handle minerals
retail and wholesale*



*We are buying collections
and mining memorabilia*

Judy Phillips
Owner

Steven Phillips
Agent

Phamily Minerals, LLC

Always new material from old collections, from Franklin to Tsumeb. Stop by and visit us at these fine shows: the Franklin show in April, the Springfield show in August, and the Franklin show in September. As always, we sell minerals at family prices. For further buying opportunities, call for an appointment, or to be put on my dealer list for special events, or when a great wholesale offer comes in.

57 Mudtown Road, Wantage, NJ 07461

(973) 875-5869 FAX: (973) 875-5864

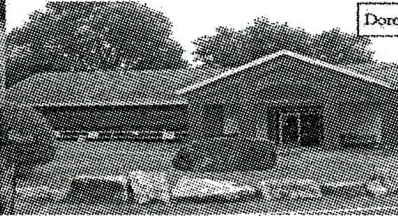
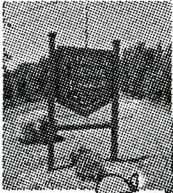
E-Mail: phamily@tellurian.com

Minerals & Collectibles • Bought & Sold

Museum Corner



Doreen, Mgr.



2004 Museum Guides, and Assistant Manager.



Carol

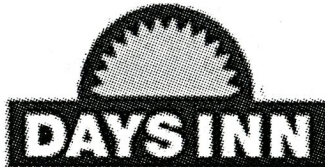
Curator Administrator Assis-



Rita, Chris, Melissa, Bill, Steve, and Andy.



And... OZZY
Woof Woof



973-827-4666

15 Route 94

McAfee, New Jersey

Franklin Mineral Museum Membership

Yearly Memberships

32 Evans Street, Franklin NJ 07416

Phone: 973-827-3481 Fax: 973-827-0149

Web: www.franklinmineralmuseum.com * E-mail: rockman@telturian.com

| | | |
|------------|----------|--|
| Individual | \$15.00 | Includes: 1 guest pass for museum exhibits |
| Family | \$25.00 | Includes: 2 guest passes for museum exhibits |
| Patron | \$50.00 | Includes: 4 guest passes for museum exhibits |
| Supporting | \$100.00 | Includes: 6 guest passes for museum exhibits |

Yearly memberships renewed every March include:

- * Personalized membership card
- * Museum newsletter, 2 issues per year
- * 10% Discount in the gift shop, excludes consignment and monographs
- * Discounts on children's birthday parties

"FMM Society" One-time payment memberships

Life \$500.00

- * Unlimited personal museum exhibit visits
- * 25 guest passes for museum exhibits
- * 10 collecting passes that include entrance into the dump & maximum of 3 pounds each

All passes will be issued once only with your membership

- * Name engraved on membership plaque.

Benefactor \$1000.00

- * Unlimited personal museum exhibit visits
- * 50 guest passes for museum exhibits
- * 20 collecting passes that include entrance to the dump & a maximum of 3 pounds each

All passes will be issued once only with your membership

- * Name engraved on membership plaque

Sustaining \$5000.00 paid in American currency or materials

- * Includes all entitlements of Benefactor membership
- * Copy of Dr.P.Dunn's "The story of Franklin and Sterling Hill"
- * Name engraved on membership plaque.

FMM Society memberships include:

1. Personalized membership card
2. 10% discount in the gift shop, excludes consignment and monographs
3. Newsletter, 2 issues per year
4. Invitations to special or planned events
5. The privilege of consigning minerals or related items (upon approval)
6. Option to display your collection of minerals or mining items in the Museum lobby for one season.
7. Special week of members only holiday discount shopping, last week of November.
8. Discount on children's birthday parties.

Collecting passes are not valid for special collecting events.

Membership cards or benefits will not be reissued, if lost or misplaced

Benefits and or events subject to change

Franklin Mineral Museum's Endowment Fund and Building Fund

The Board of Trustees realized that the continued financial and educational success of the mineral museum depends upon two long-term projects when they established an Endowment Fund and a Building Fund.

The Endowment Fund accepts monies from estates, trusts and the general public. Income from the endowment fund is reinvested and may be used for operations, if necessary. Donations to this fund are applied to the principle, which are invested in secure interest earning accounts.

The Building Fund also accepts monies from estates, trusts and the general public for the use in expansion and maintenance of its buildings. Monies received by the Building Fund is used for its stated purpose and not for general operations.

Color Book Fund (book will consist of 136 9x12 pages with a hardcover)

Present and Proposed Building Fund Projects:

New cases for Welsh Hall – for a \$1,500.00 donation a bronze plate will be mounted on a case with your name or dedication.

New Benches – for \$100.00 donation a bronze plate will be mounted on the back of a bench with your name or dedication. There are only five benches available.

The Pavilion – Donations of \$100.00 or more for this project will be acknowledged on a special dedication plaque.

Donations to either of these funds can be made out to the Franklin Mineral Museum and mailed to P.O. Box 54, Franklin, New Jersey 07416. Please indicate which of the funds the donations is for if you have a preference.

The trustees sincerely appreciate your support of permanent preservation of the mineral history of the Zinc mines of Franklin, New Jersey.

All donations to the Endowment Fund and Building Fund are tax deductible.

SHOW NOTES

**MORTON
HAHN INC.
*A NATURE PRODUCT***

30 ELM STREET
ROCKAWAY, NEW JERSEY
PHONE: 973-625-1764
FAX: 973-625-5195
E-MAIL: MHAHN64368@AOL.COM

SHELLS & FOSSILS
MINERALS & AMETHYST
TWIG PEN & PENCILS
CEDAR & CACTUS RAINSTICKS
WOODEN SNAKES & ANIMALS
RAFFIA GIRAFFES
BAMBOO FLUTES & BOOKENDS
BUG IN A NUT LINE
MINERAL & FOSSIL EGGS
DINOSAUR PRODUCTS
KITS & CARDED ITEMS
INSECT & BUTTERFLY LINES
RINGS, NECKLACES & OTHER JEWELRY
PAKISTAN POTTERY
GEODES & CHILDRENS ITEMS
110 + TYPES TUMBLED STONES

Franklin Mineral Museum

"Located in the Fluorescent Mineral Capitol of the World"

32 Evans Street

Franklin, Sussex County, New Jersey

The Museum features RARE and UNUSUAL MINERALS, world famous FLUORESCENT MINERALS, FOSSILS, ARTIFACTS, a MINE REPLICA, and hands-on ROCK COLLECTING on a 3.5 acre mine tailing dump.

← Picnic area & Gift Shop. →

OPERATING SCHEDULE

March: Open weekends and by appointment

OPEN SEVEN DAYS

APRIL - NOVEMBER

M-F 10 - 4 SAT. 10-5 SUN 11-5

Nominal Admission Fees

Senior discounts, Group Rates

Book Early!

Tours and Collecting daily

SPECIAL EVENTS

May Appreciation Day

June Night Dig

September Gem Show

November Night Dig

check web page for dates

FranklinMineralMuseum.com