

34th ANNUAL

Franklin - Sterling

**MINERAL
EXHIBIT**

The Fluorescent Mineral Capital of the World

Sat. & Sun., Oct. 6th & 7th, 1990

Sponsored by

FRANKLIN MINERAL MUSEUM

FRANKLIN, NEW JERSEY

PRICE 50¢

STERLING HILL MINING COMPANY

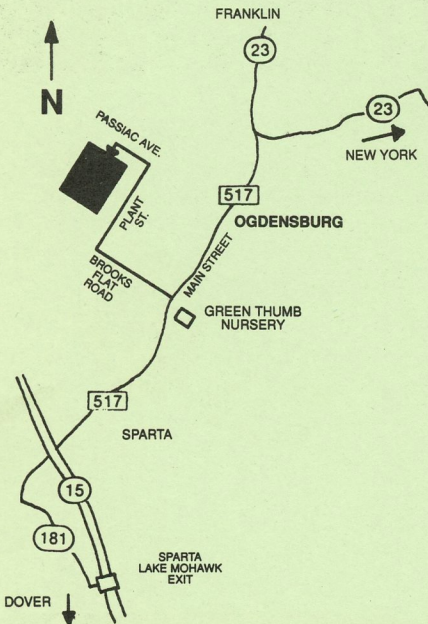
30 PLANT STREET
OGDENSBURG, N.J. 07439

Welcome
To
The Sterling Mine
In
Ogdensburg, N.J.



THE GATES ARE OPEN TO THE PUBLIC FOR A ONCE IN A LIFETIME, THRILLING OPPORTUNITY TO VISIT THE LAST OPERATING MINE IN NEW JERSEY! MANY ACTIVITIES ARE OFFERED SUCH AS A UNDERGROUND TOUR, SPECTACULAR FLUORESCENT MINERALS SHOWN IN PLACE, HISTORIC MINE BUILDINGS AND MUCH MORE!

VISIT OUR GIFT SHOP AND REFRESHMENT STAND. MODERN RESTROOM FACILITIES AND PARKING AVAILABLE. MOST AREAS ARE HANDICAP ACCESSIBLE. PICNIC AREAS ARE AVAILABLE.



ADMISSION

ADULT	\$6.50
CHILDREN (UNDER 12)	\$4.50
SENIOR CITIZEN	\$5.50

GROUP RATES

For 10 or more, reservations are required for a \$1.00 discount per person

School Groups: Call for information

HOURS

OPEN 7 DAYS A WEEK

9 A.M. TO 5 P.M.

LAST TOUR AT 3:30 P.M.

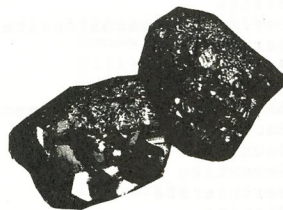
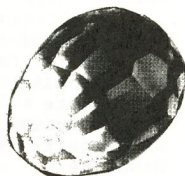
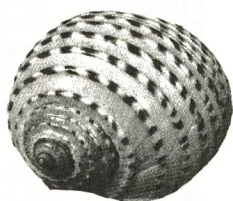
Jacket or Sweater Recommended
Proper Footwear required

**For Information Call
(201) 209-7212**

Morton Hahn Inc.

Shells 🐚 Coral ★ Jewelry

Minerals and Fossils



P.O. Box 328, Dover, N.J. 07802 — (201) 625-1764
Fax (201) 625-5195

The FRANKLIN-STERLING HILL MINERALS

Compiled from various sources by John L. Baum, Curator of the Franklin Mineral Museum, July, 1990, following the nomenclature of the 1987 Glossary of Mineral Species, and with special thanks to Dr. Pete J. Dunn.

Acanthite	Cahnite	Fayalite
Acmite	Calcite	Feitknechtite
Actinolite	Canavesite	Ferrimolybdite
Adamite	Carrollite	Ferristilpnomelane
Adelite	Caryopillite	Ferroaxinite
Akrochordite	Celestine	Flinkite
Albite	Celsian	Fluckite
Allactite	Cerussite	Fluoborite
Allanite-(Ce)	Chabazite	Fluorapatite
Alleghanyite	Chalcocite	Fluorapophyllite
Almandine	Chalcophanite	Fluorite
Analcime	Chalcopyrite	Forsterite
Anandite	Chamosite	Franklinfurnaceite
Anatase	Charlesite	Franklinite
Angradite	Chlorophoenicite	Friedelite
Anglesite	Chondrodite	
Anhydrite	Chrysocolla	Gageite
Annabergite	Clinocllore	Gahnite
Anorthite	Clinochrysochrysolite	Galena
Anorthoclase	Clinoclase	Ganomalite
Aragonite	Clinohedrite	Ganophyllite
Arsenic	Clinohumite	Genthelvite
Arseniosiderite	Clinozoisite	Gersdorffite
Arsenopyrite	Clintonite	Gerstmannite
Atacamite	Conicalcicite	Glaucocroite
Augite	Connellite	Goethite
Aurichalcite	Copper	Gold
Aurorite	Corundum	Goldmanite
Austinite	Covellite	Graphite
Azurite	Cryptomelane	Greenockite
	Cuprite	Grossular
	Cuprostibite	Groutite
Bakerite	Cuspidine	Grovesite
Bannisterite		Guerinite
Barite	Datolite	Gypsum
Barium-pharmacosiderite	Descloizite	
Barylite	Devilline	Haidingerite
Barysilite	Digenite	Halloysite*
Bassanite	Diopside	Halotrichite
Bastnaesite-group mineral	Djurleite	Hancockite
Baumhauerite	Dolomite	Hardystonite
Baumite	Domeykite	Hastingsite
Bementite	Dravite	Hauckite
Berthierite	Dypingite	Hausmannite
Biotite		Hawleyite
Birnessite	Edenite	Hedenbergite
Bornite	Epidote	Hedyphane
Bostwickite	Epsomite	Hematite
Brandtite	Erythrite	Hematolite-like-mineral
Brochantite	Esperite	Hemimorphite
Brookite	Euchroite	Hendricksite
Brucite	Eveite	Hercynite
Bultfonteinite		Hetaerolite
Bustamite		

Heulandite	Minehillite	Sclearite
Hexahydrite	Molybdenite	Scorodite
Hodgkinsonite	Monohydrocalcite	Seligmannite
Holdenite	Mooreite	Sepiolite
Huebnerite	Muscovite	Serpierite
Humite		Siderite
Hyalophane	Nasonite	Sillimanite
Hydrohetaerolite	Natrolite	Silver
Hydrotalcite	Nelenite	Sjogrenite
Hydroxyapophyllite	Neotocite	Skutterudite
Hydrozincite	Niahite	Smithsonite
	Newberyite	Sonolite
Illite	Nickeline	Spessartine
Ilmenite	Nontronite	Sphalerite
	Norbergite	Spinel
Jacobsite		Starkeyite
Jarosewichite	Ogdensburgite	Sterlinghillite
Jerrygibbsite	Ojuelaite	Stilbite
Johannsenite	Orthochrysotile	Stilpnomelane
Johnbaumite	Orthoclase	Stilpnomelane (Mn-dominant)
Junitoite	Orthoserpierite	Strontianite
	Otavite	Sulfur
Kaolinite	Oyelite-like mineral	Sussexite
Kentrolite		Svabite
Kittatinnyite	Parabrandtite	Synadelphite
Koettigite	Pararammelsbergite	
Kolicite	Parasymplesite	Talc
Kraisslite	Pargasite	Tennantite
Kutnohorite	Pectolite	Tephroite
	Petedunnite	Thomsonite
Larsenite	Pharmacosiderite	Thorite*
Laumontite	Phlogopite	Thortveitite
Lawsonbauerite	Picropharmacolite	Tilasite
Lead	Pimelite	Tiroadite
Legrandite	Powellite	Titanite
Lennilenapeite	Prehnite	Todorokite
Leucophoenicite	Pumpellyite-(Mg)	Torreyite
Linarite	Pyrite	Tremolite
Liroconite	Pyroaurite	Turneaureite
Lizardite	Pyrobelonite	
Loellingite	Pyrochroite	Uraninite
Loseyite	Pyrophanite	Uranophane
	Pyroxmangite	Uranospinite
Magnesiohornblende	Pyrrhotite	Uvite
Magnesioriebeckite		
Magnesium-chlorophoenicite	Quartz	Vesuvianite
Magnetite		Villyaellenite
Magnussonite	Rammelsbergite	
Malachite	Realgar	Wallkilldellite
Manganaxinite	Retzian - (La)	Wendwilsonite
Manganberzeliite	Retzian - (Nd)	Willemite
Manganese-hoernesite	Rhodochrosite	Wollastonite
Manganhumite	Rhodonite	Woodruffite
Manganite	Richterite	Wulfenite
Manganosite	Riebeckite	Wurtzite
Manganpyrosmalite	Roebingite	
Marcasite	Romeite	Xonotlite
Margarite	Rosasite*	
Margarosanite	Roweite	Yeatmanite
Marsturite	Rutile	Yukonite
Mcallisterite		
Mcgovernite	Safflorite	Zinallsite
Meionite	Sarkinite	Zincite
Melanterite*	Sauconite	Zinkenite
Metalodevite	Schallerite	Zircon
Metazeunerite	Scheelite	
Microcline	Schorl	
Mimetite		

* reported but not confirmed with certainty.

MEMORIUM

Since he loved and
collected minerals from
Franklin-Ogdensburg
On this special weekend
we remember
HOWARD BELSKY
(1958-1987)

CHARLOTTE & MEL
BELSKY

HOWARD MINERALS

Minerals Unique To Franklin and Sterling Hill

BAUMITE	$(\text{Mg, Mn, Fe, Zn})_3 (\text{Si, Al})_2 \text{O}_5 (\text{OH})_4$
BOSTWICKITE	$\text{CaMn}^{3+}_6 \text{Si}_3 \text{O}_{16} \cdot 7\text{H}_2\text{O}$
CHARLESITE	$\text{Ca}_6 (\text{Al, Si})_2 (\text{SO}_4)_2 [\text{B}(\text{OH})_4] (\text{OH})_{12} \cdot 26\text{H}_2\text{O}$
CHLOROPHOENICITE	$\text{Mn}_3 \text{Zn}_2 (\text{OH})_6 [\text{As}_0.5 \text{H}_0.5 (\text{O, OH})_3]_2$
ESPERITE	$(\text{Ca, Pb}) \text{ZnSiO}_4$
FRANKLINFURNACEITE	$\text{Ca}_2 \text{Fe}^{3+} \text{Mn}^{2+}_3 \text{Mn}^{3+} \text{Zn}_2 \text{Si}_2 \text{O}_{10} (\text{OH})_8$
GERSTMANNITE	$(\text{Mg, Mn})_2 \text{ZnSiO}_4 (\text{OH})_2$
HANCOCKITE	$(\text{Pb, Ca, Sr})_2 (\text{Al, Fe}^{3+})_3 (\text{SiO}_4)_3 (\text{OH})$
HARDYSTONITE	$\text{Ca}_2 \text{ZnSi}_2 \text{O}_7$
HAUCKITE	$(\text{Mn, Mg})_2 \text{Zn}_{18} \text{Fe}^{3+}_3 (\text{SO}_4)_4 (\text{CO}_3)_2 (\text{OH})_{81}$
HENDRICKSITE	$\text{K} (\text{Zn, Mg})_3 \text{Si}_3 \text{AlO}_{10} (\text{OH})_2$
HODGKINSONITE	$\text{Zn}_2 \text{Mn} (\text{SiO}_4) (\text{OH})_2$
HOLDENITE	$(\text{Mn, Mg})_6 \text{Zn}_3 (\text{OH})_8 (\text{AsO}_4)_2 (\text{SiO}_4)$
JAROSEWICHITE	$\text{Mn}_2 \text{Mn}^{3+} (\text{AsO}_4) (\text{OH})_6$
JOHNBAUMITE	$\text{Ca}_5 (\text{AsO}_4)_3 (\text{OH})$
KITTATINNYITE	$\text{Ca}_4 \text{Mn}^{3+}_4 \text{Mn}^{2+}_2 \text{Si}_4 \text{O}_{16} (\text{OH})_8 \cdot 18\text{H}_2\text{O}$
KOLICITE	$\text{Mn}_7 \text{Zn}_4 (\text{AsO}_4)_2 (\text{SiO}_4)_2 (\text{OH})_8$
KRAISSLITE	$\text{Fe}^{3+}_2 \text{Mg}_4 \text{Mn}_{44} \text{Zn}_6 (\text{AsO}_4)_6 (\text{AsO}_3)_4 (\text{SiO}_4)_{12} (\text{OH})_{36}$
LAWSONBAUERITE	$(\text{Mn, Mg})_9 \text{Zn}_4 (\text{SO}_4)_2 (\text{OH})_{22} \cdot 8\text{H}_2\text{O}$
LENNILENAPEITE	$\text{K}_{6-7} (\text{Mg, Mn, Zn, Fe})_{48} (\text{Si, Al})_{72} (\text{O, OH})_{216} \cdot 16\text{H}_2\text{O}$
MAGNESIUM-CHLOROPHOENICITE	$(\text{Mg, Mn})_3 \text{Zn}_2 (\text{OH})_6 [\text{As}_0.5 \text{H}_0.5 (\text{O, OH})_3]_2$
MCGOVERNITE	$(\text{Mn, Mg, Zn})_{273} \text{As}^{3+}_{12} \text{As}^{5+}_{30} \text{Si}_{42} \text{O}_{324} (\text{OH})_{252}$
MINEHILLITE	$\text{K}_{2-3} \text{Ca}_{28} [\text{Zn}_4 \text{Al}_4 \text{Si}_{40} \text{O}_{112} (\text{OH})_4] (\text{OH})_{12}$
MOOREITE	$\text{Mg}_9 \text{Mn}_2 \text{Zn}_4 (\text{SO}_4)_2 (\text{OH})_{26} \cdot 8\text{H}_2\text{O}$
NELENITE	$\text{Mn}_{16} \text{Si}_{12} \text{O}_{30} (\text{OH})_{14} [\text{As}^{3+}_3 \text{O}_6 (\text{OH})_3]$
PARABRANDTITE	$\text{Ca}_2 \text{Mg} (\text{AsO}_4)_2 \cdot 2\text{H}_2\text{O}$
PETEDUNNITE	$\text{CaZnSi}_2 \text{O}_6$
RETZIAN - (La)	$\text{Mn}_2 \text{La} (\text{AsO}_4) (\text{OH})_4$
RETZIAN - (Nd)	$\text{Mn}_2 \text{Nd} (\text{AsO}_4) (\text{OH})_4$
SCLARITE	$(\text{Zn, Mn, Mg})_4 \text{Zn}_3 (\text{CO}_3)_2 (\text{OH})_{10}$
STERLINGHILLITE	$\text{Mn}_3 (\text{AsO}_4)_2 \cdot 4\text{H}_2\text{O}$
TORREYITE	$(\text{Mg, Mn})_9 \text{Zn}_4 (\text{SO}_4)_2 (\text{OH})_{22} \cdot 8\text{H}_2\text{O}$
WALKKILLDELLITE	$\text{Ca}_4 \text{Mn}^{2+}_6 \text{As}^{5+}_4 \text{O}_{16} (\text{OH})_8 \cdot 18\text{H}_2\text{O}$
YEATMANITE	$[\text{Mn}_5 \text{Sb}_2] [\text{Mn}_2 \text{Zn}_8 \text{Si}_4] \text{O}_{28}$

Fluorescent Minerals of Franklin and Sterling Hill, N. J.

A 1990 CHECK-LIST BASED ON OBSERVATIONS BY RICHARD C. BOSTWICK

FL = fluoresces; PH = phosphoresces; SW = shortwave ultraviolet radiation;

LW = longwave ultraviolet radiation

These descriptions are necessarily brief and hence simplistic. the ultraviolet wavelength (SW or LW) listed with a fluorescent response is the wavelength for which the response is stronger; many listed minerals fluoresce under both LW and SW. Unusual fluorescent responses are listed in parentheses. Fluorescent intensity and subtle differences in hue are not mentioned.

While mineral fluorescence is a powerful tool for rapid mineral identification, it should be used in conjunction with other identification techniques.

- | | |
|---|--|
| Albite: FL red SW | Fluorapatite: FL orange or blue SW
(FL "peach" SW) |
| Aragonite: FL, PH cream LW
(FL green SW) | Fluorapophyllite: FL, PH white SW |
| Barite: FL cream SW
(FL tan SW, green LW) | Fluorite: FL, PH blue-green SW, LW
or FL violet LW |
| Barylite: FL violet SW,
conspicuous under iron arc | Guerinite: FL white SW |
| Bassanite: FL, PH violet SW | Gypsum: FL pale blue or cream SW |
| Bustamite: FL red LW | Hardystonite: FL violet SW |
| Cahnite: FL cream SW | Hedyphane: FL cream or orange SW |
| Calcite: FL red w/ red-orange PH
(FL pink, orange, cream green, blue,
yellow, violet, etc.) | Hemimorphite: FL, PH white LW
(FL green SW) |
| Canavesite: FL, PH violet LW | Hodgkinsonite: FL deep red LW |
| Celestine: FL cream LW
(FL violet SW) | Hyalophane: FL red SW |
| Cerussite: FL yellow LW | Hydrotalcite: FL cream LW |
| Chabazite: FL green SW | Hydroxyapophyllite:
FL, PH weak white SW |
| Charlesite: FL pale blue SW, but
coated with cream - FL gypsum | Hydrozincite: FL blue SW |
| Chondrodite: FL yellow SW | Johnbaumite: FL orange SW |
| Clinohedrite: FL, PH orange SW | Junitoite: FL pale yellow LW |
| Corundum: FL deep red LW | Magnesio-hornblende: FL pale
greenish-blue SW |
| Cuspidine: FL orange-yellow SW
with brief orange-red PH | Manganaxinite: FL red SW |
| Datolite: FL cream SW | Margarosanite: FL blue & red SW
(FL orange LW) |
| Diopside: FL blue SW, cream LW | Marialite: FL yellow SW, pink LW |
| Dypingite: FL, PH blue SW, LW | Mcallisterite: FL cream SW |
| Epsomite: FL cream LW | Meionite: FL pinkish-red SW
(FL pink, orange, yellow, etc.) |
| Esperite: FL lemon-yellow SW | Metalodevite: FL green SW |
| Fluoborite: FL cream SW | Microcline: FL blue or red SW |

Minehillite: FL violet SW	Sphalerite: FL, PH LW orange, blue, yellow-orange or orange-yellow
Monohydrocalcite: FL green SW	Talc: FL cream LW
Nasonite: FL pale yellow SW	Thomsonite: FL cream SW
Newberyite: FL cream SW	Tilasite: FL yellow SW
Norbergite: FL yellow SW	Titanite: FL yellow-orange SW
Pargasite: FL pale greenish-blue SW	Tremolite: FL blue SW (FL yellow LW)
Pectolite: FL, PH orange SW	Turneaureite: FL orange SW
Phlogopite: FL yellow SW	Uranospinite: FL green SW
Picropharmacolite: FL white LW	Uvite: FL yellow SW
Powellite: FL yellow SW	Willemite: FL, PH green SW. Also FL, PH yellow, greenish-yellow, orange.
Prehnite: FL pinkish orange SW	Wollastonite: FL, PH orange to yellow SW
Quartz: FL yellow or green SW	Xonotlite: FL violet SW
Roebingite: FL red w/red-orange PH SW	Zincite: FL yellow LW
Scheelite: FL yellow or blue SW	Zircon: FL orange SW
Smithsonite: FL, PH white SW	

In Appreciation

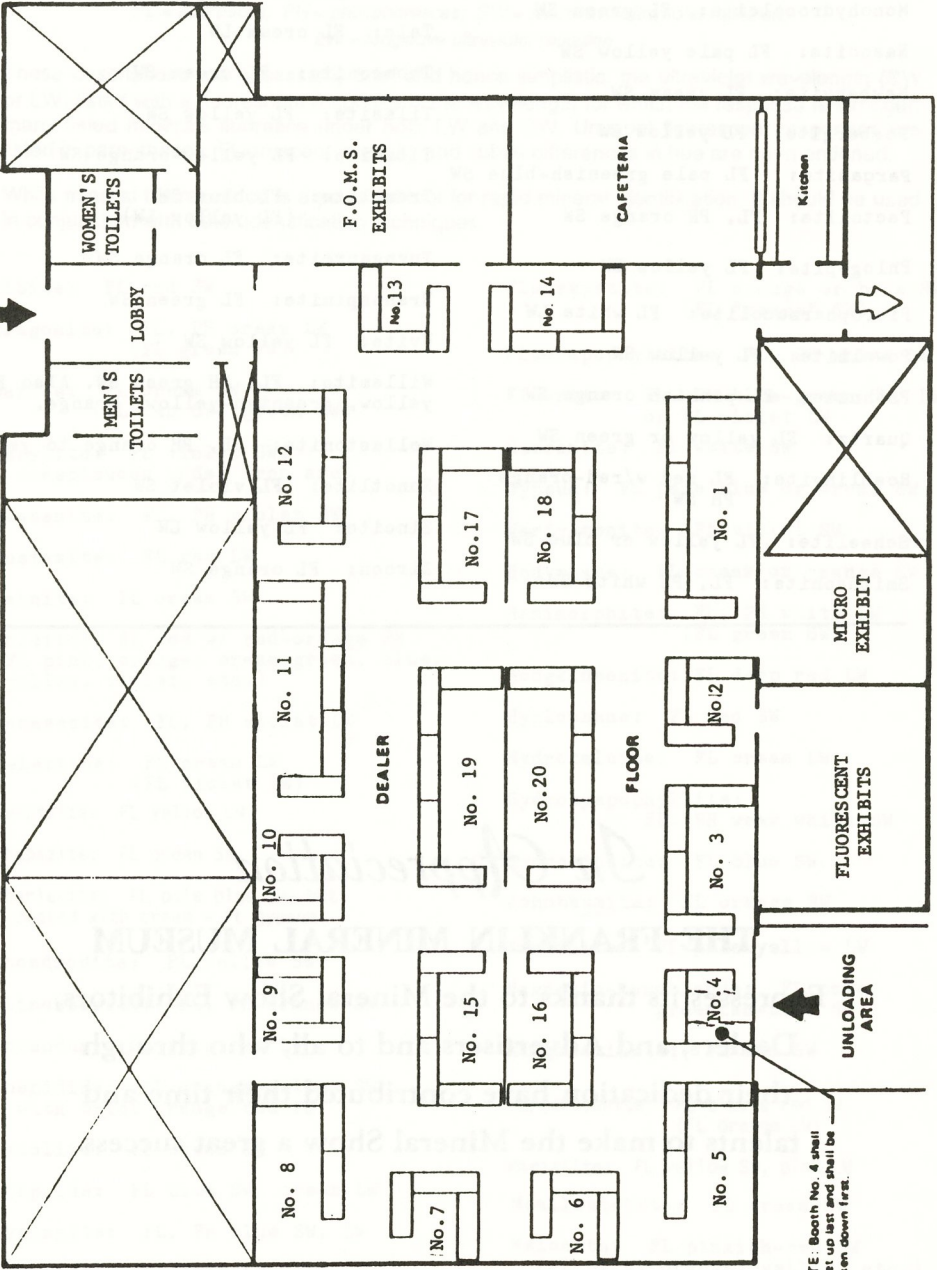
THE FRANKLIN MINERAL MUSEUM

Expresses its thanks to the Mineral Show Exhibitors,
Dealers, and Advertisers and to all, who through
their dedication have contributed their time and
talents to make the Mineral Show a great success.

FRANKLIN-STERLING HILL MINERAL SHOW
National Guard Armory • Franklin, New Jersey

1983

MAIN ENTRANCE



NOTE: Booth No. 4 shall be set up last and shall be broken down first.

Scale: 1/16" = 1'-0" Drill Floor 80" X 120"

BUS PICK-UPS

MINERAL DEALERS ATTENDING THE FRANKLIN-STERLING MINERAL SHOW

1. VICTOR YOUNT, Route 5, Box 188, Warrenton, VA 22186
 2. MINERAL CABINET, P.O. Box 814, New Providence, NJ 07974
 3. EXCALIBUR MINERAL CO., 163 Third Ave., Suite 149, New York, NY 10003
 4. MAGAZINES
 5. GILMAN'S, P.O. Box 103, Hellertown, PA 18055
 6. AMAZON IMPORTS, P.O. Box 58, Williston Park, NY 11596
 7. J & P MINERALS, P.O. Box 846, Germantown, MD 20874
 8. KARL VOSSBRINCK SILVERPICK, 1682 St. Johns Ave., Merrick, NY 11566
 9. AKE L. ANDERSON, 31 Prospect Street, Huntington, NY 11743
 10. S.T.D. MINERAL CO., 22 Spring Hill Rd., Hyde Park, MA 02136
 11. FOWLER'S WIRE WRAPPING, P.O. Box 199, Goochland, VA 23063
 12. AURORA MINERAL CORP., 16 Niagara Avenue, Freeport, NY 11520
 13. THE GEMMERY, 25 Lans Downe Ln., Palm Coast, FL 32037
 14. JIM'S GEMS, INC., 1581 Route 23, Wayne, NJ 07470
 15. HOWARD MINERALS, P.O. Box 56, Vanderveer Station, Brooklyn, NY 11210
 16. THE LESNICKS, 8405 Rawhide Trail, Tucson, AZ 85715
 17. DAVID M. CRAWFORD, 1808 Harlem Blvd., Rockford, IL 61103
 18. WILLIS' EARTH TREASURERS, 116 Prospect St., Stewartsville, NJ 08886
 19. THE ROCKSMITHS, P.O. Box 157, Tombstone, AZ 85638
 20. MARTIN MINERALS, P.O. Box 392, Millersburg, PA 17061
-

BOOSTERS

Betty Dean	Georg Kosel	Joe Cilen
Omer Dean	Ed Letscher	Joe Kaiser
Doni & Jack Lange	Fran & John Magner	Warren Langill
Al Standfast	Stephen Fritz	Richard C. Bostwick
Mary & Bill Welsh	Miriam & Lee Lowell	Tema Hecht
Jack Baum	Brenda & Ray Latawicz	Ruth Bostwick
Augusta Baum	Ron DeBlois	Richard S. Bostwick
Bill Trost	Steven Misiur	Walt Mosher
Phil Betancourt	Dick & Elna Hauck	Frank Mansfield
Michael Betancourt	Rhea Hauck	Bill & Helen Wurst

The Board of Directors of the
FRANKLIN MINERAL MUSEUM

expresses its appreciation to

ALFRED L. STEADFAST, M.D.

for his generous contributions towards
the Museum's financial benefit and educational
enhancement of our Museum.

WILCOX PRESS

Letterpress & Offset Printing

Serving Sussex County For Over 65 Years

- Letterheads
- Envelopes
- NCR Forms
- Business Cards
- Menus
- Wedding & Party Announcements
- Flyers, Booklets & Books
- Raffle Tickets
- Photocopies
- Bumper Stickers
- Tricky Tray Tickets

**WE ARE MORE
THAN JUST A PRINTER!**

"FROM AN ERASER TO A COMPLETELY FURNISHED OFFICE."

**WE HAVE ONE OF THE LARGEST
SELECTIONS OF OFFICE SUPPLIES
IN SUSSEX COUNTY**

NOT JUST
TODAY...

BUT
EVERYDAY!

NOT JUST
THIS MONTH...

10% DISCOUNT
ON MOST OFFICE SUPPLIES & EQUIPMENT

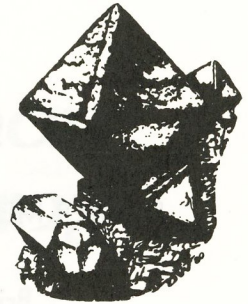
(201) **827-7474**

6 MAIN STREET, HAMBURG, NJ
MON - FRI 8:00 to 5:00 • SATURDAY 9:00 to 12:00

Annual Franklin-Sterling Hill Mineral Show

EXHIBITORS

JOHN L. BAUM
DR. PHILIP BETANCOURT
MICHAEL BETANCOURT
RICHARD C. BOSTWICK - FL. EXHIBIT
JOE CILEN
JIM CHENARD
JOHN EBNER - MICRO EXHIBIT
GEORGE ELLING
RICHARD & ELNA HAUCK
JOHN KOLIC
CHESTER & MARY BRIDGET LEMANSKI
LEE LOWELL
DR. WARREN MILLER - FL. EXHIBIT
STEVE MISIUR
DON PHISTER
STEVE SANFORD
HENRY VAN LENTEN
DAVE WELLBROCK
WILFRED WELSH
HERB YEATES - SEM EXHIBIT
STEVE M. KUITEMS
RAY LATAWIEC



INSTITUTIONS

F.O.M.S. CLUB EXHIBIT - Steve Misiur
HARVARD UNIVERSITY GEOLOGICAL MUSEUM - Dr. Carl Francis
MORRIS MUSEUM - Nick Rochester
RUTGERS UNIVERSITY GEOLOGICAL MUSEUM - Bill Selden
SPEX/GERSTMANN COLLECTION - Kraissl Hall, Franklin Mineral Museum

Special thanks to all exhibitors, The Franklin-Ogdensburg Mineralogical Society, and to the Staff and Board of Trustees of the Franklin Mineral Museum. Your efforts add to the success of the Franklin/Ogdensburg Mineral Show and perpetuation of the Franklin Mineral Museum.

*John Cianciulli
Exhibit Coordinator*



National Community Bank of New Jersey

FRANKLIN OFFICE (201) 827-9181
SUSSEX OFFICE (201) 875-5121
WANTAGE OFFICE (201) 875-7715

*"New Jersey's PREEMINENT
BANK — since 1895"*

Member F.D.I.C.

827-6565

"Pizza is our Specialty"

JOLLY PIZZA RESTAURANT & PUB

DINNER MENU * COCKTAILS * TAKE OUT ORDERS

Bring The Family To Our New Dining Room
Open 7 Days — Mon. - Sat., 11 A.M. to 11:30 P.M.
Sun. 4 to 10:30 P.M.

27 ROUTE 23

FRANKLIN, N. J.

Convenient — Across From The Armory

HAMBURG PLUMBING SUPPLY CO., INC.

WHOLESALE PLUMBING & HEATING SUPPLIES

RT. #23 SOUTH & PRINCE ST.
HAMBURG, N. J. 07419

201 - 827-2553

Mon-Fri 7:00-5:30

Sat 8:00-2:00

Open Eves: Tues & Thurs till 8:00 PM

Visit Our Newly
Remodeled Showroom

201-827-5280

Established 1969

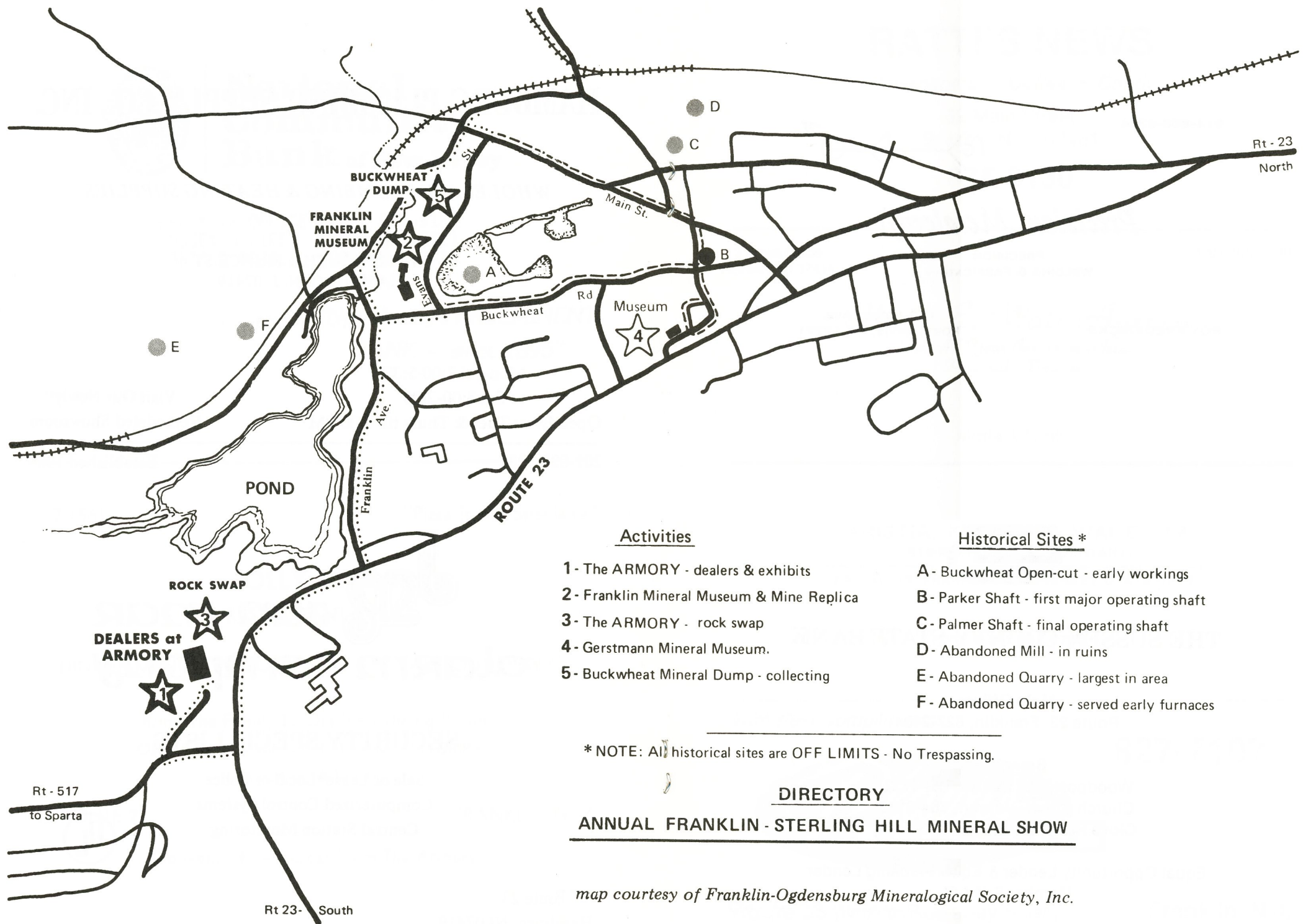
 **Jan-Mar**
alarm company

SECURITY SPECIALISTS

Sale or Lease • Local or Police
Computerized Control Systems
Central Station Monitoring



87 Route 23
Hamburg, NJ 07419



914-856-6384



Precision Metalcraft

PRECISION
WELDING & FABRICATION

ROY FREDERICKS

180 JERSEY AVE.
PORT JERVIS, NY 12771



THE SUSSEX COUNTY STATE BANK

Main Office:

Route 23, Franklin, 827-2404

Branches:

Woodport Rd., Sparta, 729-7223

Church Street, Vernon, 764-6175

Clove Road, Montague, 293-3488

Equal Opportunity Lender & Equal Housing Lender
Member F.D.I.C.

RATTI'S NEWS

Newspapers • Coffee • Candy

32 Main Street
Sussex, N.J. 07461

875-9130

2 Rowe Place
Franklin, NJ 07416

(201) 827-9080

Harry E. Watt Agency
For All Your Insurance Needs
Personal - Business

Marie J. Scott

CARISTIA, KULSAR & WADE, P.A.
CERTIFIED PUBLIC ACCOUNTANTS

395 RT. 23, FRANKLIN, NEW JERSEY 07416-0395

TEL: (201) 827-6762

With Best Compliments...

827-7107



Route 23 (Next to Rockaway Sales)

Franklin, N.J.

99 ROUTE 23
HAMBURG, N.J. 07419

201-827-9171
FAX: 201-827-0656



MONARCH
ELECTRIC CO.

 *Handwritten signature*
OF AMERICA

HS **AND** **GEO**
WHERE THE DIFFERENCE IS SERVICE.
CHEVROLET

2 WALLING AVE.
At The Traffic Light
Under the Flag
SUSSEX

CALL **201-875-6101**



Photo

STATION

- 1/2 HOUR FILM DEVELOPING •
- CUSTOM PHOTO STUDIO •

Rt. 23 North • Franklin, NJ 07416

(201) 827-7676

- KITCHEN CABINETS • WINDOWS
- SIDING • DOORS • MATERIAL LISTS • ESTIMATES



Value, Quality, Service — Since 1889

**LUMBER & BUILDING
MATERIAL CENTERS**

Chris Van Dohlen
Manager

(201) 827-9110
FAX (201) 827-2765

346 Main St., Rt. 517
Ogdensburg, N.J. 07430

Tel. 827-7670

HAMBURG HARDWARE CO.

HARDWARE—ELECTRICAL SUPPLIES

PLUMBING SUPPLIES—DE VOE PAINT

The Old Fashion Store With Personalize Service

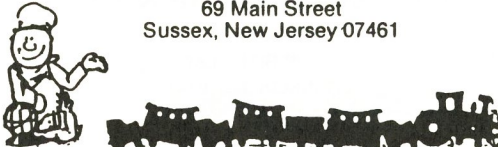
1 MAIN STREET

HAMBURG, N. J.

(201) 875-8580

SUSSEX COUNTY HOBBY

69 Main Street
Sussex, New Jersey 07461



827-9141



390 RUTHERFORD AVE.

FRANKLIN, N. J.

Success

ANNA ELEKES and FAMILY

Quarry Restaurant

AT HERITAGE LAKES

Luncheons & Dinners 209-4048

Big Screen TV's

Sports and Spirits

THE ULTIMATE SPORTS BAR

827-1007

Route 517 (Rudeville Road) • Hamburg, NJ

(201) 827-7711

HOT BAGEL STOP & DELI

ROUTE 23
SHOP-RITE PLAZA
FRANKLIN, N.J. 07416

Compliments Of

CHESTER and MARY BRIDGET LEMANSKI, JR.



47 Church St.
Franklin, N.J.
827-7135

100 Route 23
Franklin, N.J.
827-8200

61 Sparta Ave.
Sparta, N.J.
729-3141

The logo for TV and Appliance Center is contained within an oval border. The text "TV and APPLIANCE CENTER" is written in a bold, sans-serif font, with "TV and" on the top line and "APPLIANCE CENTER" on the bottom line.



SUNDAY BRUNCH
10 A.M. TO 2 P.M.

Casual Dining in The
RUSTIC ATMOSPHERE
of a Refurbished
DAIRY BARN

Serving Dinner:
Sun., Mon., Wed.,
Thurs., Fri. & Sat.

WEEKEND SPECIALS



(201) 827-2949

Take Rt. 80 W. to 15 N. to 94 E. (Towards Hamburg), Hardyston Twp.
RT. 94, HARDYSTON, N.J. (Between Hamburg & McAtee)



ROUTE 94
HARDYSTON, N.J. 07419

(201) 827-0411

ERIC R. SMART ASSOCIATES

LAND SURVEYING & PLANNING

ERIC R. SMART
P.L.S., P.P.
201-875-9449

COYKENDALL ROAD
R.D. 4, BOX 84
SUSSEX, NEW JERSEY 07461

TEL: (201) 827-5740

樓 福 萬

SZECHUAN GARDEN
CHINESE RESTAURANT

Szechuan, Mandarin and Cantonese Cuisine
Orders to Take out

Shoprite Shopping Center
Route 23-Franklin, N.J. 07416

We Are Looking Forward to Seeing You At The

FRANKLIN DINER

JACK and JOYCE CARROLL

OUR 24th YEAR

ROUTE 23

FRANKLIN, N. J.

(201) 875-1270

Rolling Hills MOTEL

Cable T.V. ★ Year-Around Temperature Control



ROUTE 23
SUSSEX, N.J. 07461

(201) 875-4191

(201) 875-7700

SUSSEX MOTEL

Swimming Pool ★ Year-Round Temperature Control
Cable T.V. ★ Efficiency Units



NIRMAL INC.

Route 23, Sussex
New Jersey 07461

(201) 827-4666

94 MOTOR LODGE

LUXURIOUS ACCOMMODATIONS

REASONABLE RATES

5 Min. Action Park

2 Min. Great Gorge Ski Resort

ROUTE 94

McAFEE, N. J. 07428

Please patronize our advertisers...

We appreciate their support!

**Sussex-Wantage
Answering Service**

1 Second Street, Sussex, New Jersey 07461



Patti Van Engelen

**"We Are Connected
To The Very Best People"**

(201) 875-7125

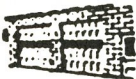
Wallpapering

Painting

KEN PROL

84 Skytop Road
Wantage, NJ 07461

(201) 875-7492



**DON PIERSON
(201) 875-9223
VERNON, N.J.**

CHR OVERHEAD DOORS

SALES • SERVICE • INSTALLATION

CUSTOM SECTIONAL DOORS

WOOD - STEEL - FIBERGLASS ALUMINUM

ROLL-UP ALUMINUM AND STEEL DOORS

**ELECTRIC DOOR &
GATE OPENERS**

**ALL NEW ENERGY EFFICIENT
INSULATED GARAGE DOORS**

GILMAN'S

"AT THE CAVE"

Box 103

Hellertown, Pa. 18055

YOUR COMPLETE LAPIDARY SUPPLY HOUSE

Phone 215/838-8767

Open every day 9 a.m. to 8:00 p.m.



The Gemmery of Palm Coast

JOHN AND JULIANNA WITHEY

25 Lansdowne Lane • Palm Coast, FL 32037
(904) 445-9030

WILLIS' EARTH TREASURES

Fine Mineral Specimens - Jewelry

Dick & Joyce Willis
201-859-0643

116 Prospect St.
Stewartsville, NJ 08886

MINERALS

GEMS

**THE
SILVER PICK**



Karl & Anne Vossbrinck
1682 St. Johns Avenue
N. Merrick, New York
516-FR 8-9051

Gems & Minerals
Lapidary Supplies
Cutting Materials

75 Main Street
Sussex, NJ 07461

201 702-0922
800 458-4813

Laurie Rea's

FINE JEWELRY

14K Gold & Sterling Silver & Marcasite

Marshalls Creek, PA

717 223-7720

(201) 464-7235

THE MINERAL CABINET

*Specializing in Worldwide and New Jersey Minerals
of Select Quality in All Price Ranges*

P.O. BOX 814

NEW PROVIDENCE, N. J. 07974

A & V MASSEY

MASSEY'S MINERAL SHOP

MICRO XLS, FLUORESCENT
FRANKLIN & STERLING

2 HUDSON ST. (Off Main St.)
FRANKLIN, N.J. 07416

201-827-9027



NEW **NOW OPEN**

STOPLIGHT DINER

- DAILY SPECIALS -
Breakfast • Lunch • Dinner
- Reasonable Prices -

OPEN FOR DINNER 4pm-9pm

Rt. 23, Sussex
(at light across
from Town Hall) **702-1535** Mon.-Sat. 5am-9pm
- open 7 days - Sun. 5am-4pm

Compliments of . . .

WEISS' CLOTHING STORE

Levi, Wrangler, Lee, Keds, Devon, Billy The Kid

Clothes for the Entire Family

111 MAIN STREET

FRANKLIN, N. J.

2 Rowe Place
Franklin, NJ 07416

(201) 827-9080

Harry E. Watt Agency
For All Your Insurance Needs
Personal - Business

Marle J. Scott



827-3949

JONES FLORIST

FLOWERS FOR ALL OCCASIONS

All Major Credit Cards

ROUTE 23, 221 SOUTH

HAMBURG, N. J. 07419

GOOD COFFEE

NJ LOTTERY

RICHARDS

THE FOUNTAIN AT THE FOUNTAIN

71 MAIN STREET
SUSSEX, NJ 07461
(201) 875-5160

MARY A. MEZGER, PROP.

BAKERY

NEWSPAPERS

Phone 827-9790

BARNEY'S, INC.

"EVERYTHING FOR THE HOME HANDY MAN
AND FOR BUSINESS MAINTENANCE NEEDS"

PAINT — HARDWARE — SEEDS & FEEDS
LAWN and GARDEN EQUIPMENT

ROUTE 23

FRANKLIN, N. J. 07416

(201) 827-2627



BUY - SELL

Bob's Collectables

BASEBALL CARDS

COMICS - ADV. GAMING

SPECIALIZING IN TOBACCO CARDS

M-W-F 12-8:30
SAT-SUN 9-5
OR BY APPOINTMENT

99 RT. 23 NORTH
HAMBURG, N.J.

PHONE 827-9260

REINSPECTION STATION

JOHNNY'S SUNOCO AND
PROFESSIONAL AUTOMOTIVE CARE CENTER

"Where Certified Mechanics Care For Your Vehicle"

BEAR TELALINER FRONT END SERVICE
ELECTRONIC TUNE UP SERVICE

ROUTE 23
FRANKLIN, N. J. 07416

A Complete Family Bookstore



FRANKLIN BOOKSHOP

284 Highway 23
Franklin, NJ 07416

(201) 827-7243

PAM LAUBENTHAL, Owner

SPEAKERS



This gem and mineral show can be even more enjoyable if you budget your time so that you can hear the guest speakers during your visit to this "beehive of activity" at the Franklin Armory. If your purse strings need a rest, chances are that your feet need a rest too. Let the speakers raise your aspiration level before you return to your favorite exhibits and favorite dealers.

Saturday, October 6
1:00 p.m.

Earl Verbeek
"Mines, Minerals and Geology of the
Zinc Region"

Sunday, October 7
2:00 p.m.

Joe Cilen
Franklin-Sterling Minerals
Slide Program

THE TWELFTH ANNUAL F.O.M.S. DINNER OCTOBER 6, 1990 DON'T MISS IT!

- The Place — The Lyceum Hall, The Immaculate Conception Church, 75 Church Street, Franklin, New Jersey (about 5 minutes by auto from the Franklin Armory, site of the 34rd Franklin-Sterling Mineral Exhibit).
- The Time — Social Hour begins at 6:30 p.m.; dinner begins at 7:00 p.m.

Franklin Mineral Museum's Endowment Fund and Building Fund

The Board of Trustees realized that the continued financial and educational success of the mineral museum was dependent upon two long term projects when they established an Endowment Fund and a Building Fund.

The Endowment Fund accepts monies from estates, trusts and the general public. Only the income from the Endowment Fund is used to operate the museum. The principal of the Endowment Fund is restructured from any distribution to museum support or expansions.

The Building Fund also accepts monies from estates, trusts and the general public for use in expansion and maintenance of its buildings. Monies received by the Building Fund are restructured for its stated purpose and not for general operations.

Donations to either of these funds can be made out to the Franklin Mineral Museum and mailed to P.O. Box 54, Franklin, New Jersey 07416. Please indicate which of the funds the donations is for if you have a preference.

The trustees sincerely appreciate your support of the permanent preservation of the mineral history of the zinc mines of Franklin, New Jersey.

All donations to the Endowment Fund and Building Fund are tax deductible.

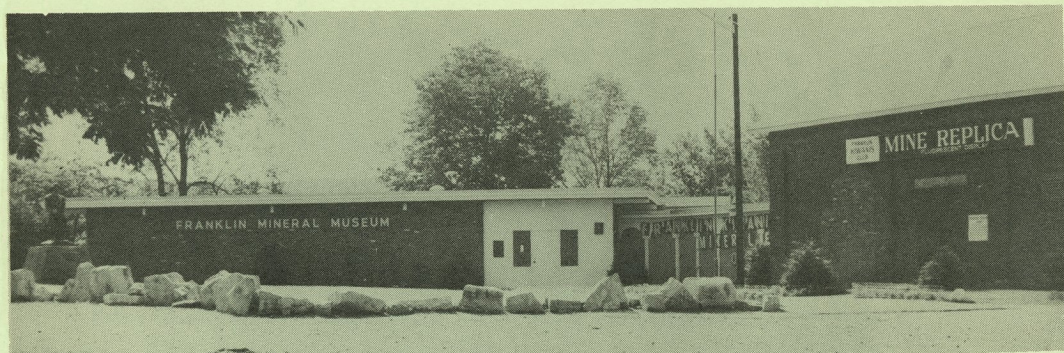


Photo by ERNIE DUCK

THE FRANKLIN MINERAL MUSEUM and MINE REPLICA

SEE THE WORLD FAMOUS FRANKLIN MINERALS, MINING HISTORY, FLUORESCENT DISPLAY AND A TRUE REPLICA OF THE MINING OPERATIONS HUNDREDS OF FEET BELOW THE SURFACE OF THE EARTH.

**SALES AREA: — Mineral Lights, Specimens,
Souvenirs and jewelry available.**

NEW OPERATING SCHEDULE

SPRING (April 15 - June 30)* and FALL (Sept. 1 - Nov. 15)

Monday: Closed. Tues., Wed., Thurs.: Groups, by Reservation.

Fri. & Sat.: Open to Public 10 a.m. - 4 p.m.

Sunday: Open to Public 12:30 p.m. - 4:30 p.m.

SUMMER (July, Aug.): Mon., Tues.: Closed.

Wed. thru Sat.: Open to Public 10 a.m. - 4 p.m.

Sunday: Open to Public 12:30 p.m. - 4:30 p.m.

**Closed Easter*

Gifts and donations to the Museum are tax deductible.

**6B Evans Street, Box 54, Franklin, N. J. 07416
(201) 827-3481**