

29th ANNUAL

# Franklin - Sterling

## MINERAL EXHIBIT

*The Fluorescent Mineral Capitol of the World*

Sat. & Sun., Oct. 5th & 6th, 1985



*Sponsored by*

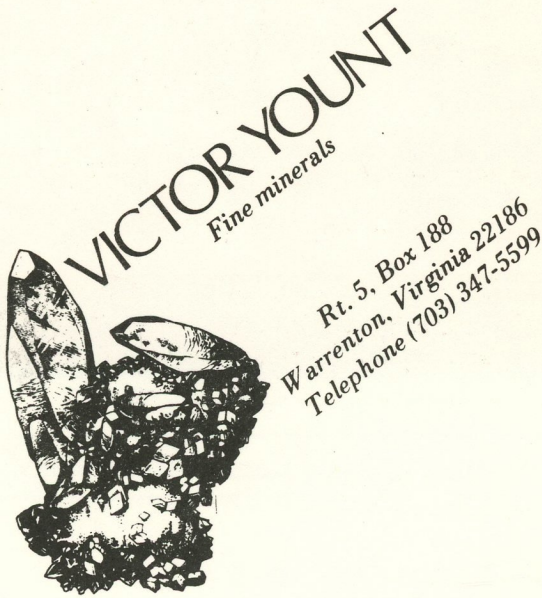
**KIWANIS CLUB OF FRANKLIN**  
FRANKLIN, NEW JERSEY

**PRICE 50¢**

Vic is "pinch hitting" for us this year folks,  
so please be sure and visit him at Booth No. 1

# MINERAL

S  
H  
O  
W  
C  
A  
S  
E

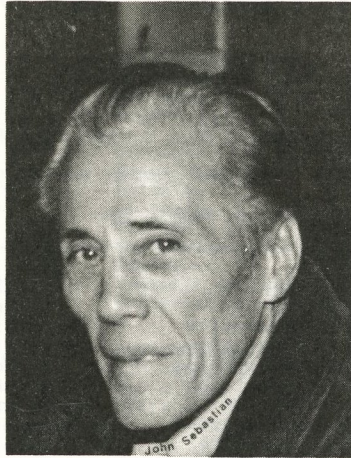


**LEE & JENNIE ARESON**

TEL. (914) 343-5051

21 IRWIN AVENUE

MIDDLETOWN, NEW YORK 10940



**JOHN E. SEBASTIAN, JR.**  
**— A FRIEND OF REMARKABLE DEDICATION.**

John E. Sebastian, Jr. is a native of Franklin, N. J. born to Hungarian immigrants who came to the United States to work in the Franklin Mine, as did John during his younger years between 1936 and 1947.

John left the Franklin area to work in transportation management. His interest in minerals, however, had already been piqued. The founding of the Franklin-Ogdensburg Mineralogical Society, following the closing of the Franklin Mine, prompted John to re-establish his ties to Franklin. Within a few short years he became President of the Society. During this time John became one of the strongest proponents of a mineral museum in Franklin. He soon became one of the founding trustees of the Franklin Mineral Museum.

It is John Sebastian who has directed the safety programs of both the Museum and Society, programs that have been accident free for nearly two decades. The Mineralogical Society has experienced a remarkably successful field trip program again thru the dedicated efforts of John Sebastian.

It is with great pleasure that we take this opportunity to recognize John Sebastian and thank him for his continued dedication to those things that mean so much to all of us.

# The FRANKLIN-STERLING HILL MINERALS

Edited from numerous sources by John L. Baum, Curator of the Franklin Mineral Museum, August, 1985, following the nomenclature of the 1983 Glossary of Mineral Species, and with special thanks to Dr. Pete J. Dunn.

---

Acanthite	Cahnite	Fayalite
Acmite	Calcite	Feitnechtite
Actinolite	Canavesite	Ferrimolybdate
Adamite	Carrollite	Ferristilpnomelane
Adelite	Caryopilite	Ferroaxinite
Akrochordite	Celestine	Flinkite
Albite	Celsian	Fluoborite
Allactite	Cerussite	Fluorapatite
Allanite	Chabazite	Fluorapophyllite
Alleghanyite	Chalcocite	Fluorite
Almandine	Chalcophanite	Forsterite
Analcime	Chalcopyrite	Franklinite
Anatase	Charlesite	Friedelite
Andradite	Chlorophoenicite	
Anglesite	Chondrodite	Gageite
Anhydrite	Chrysocolla	Gahnite
Annabergite	Chrysotile	Galena
Anorthite	Clinoclare	Ganomalite
Anorthoclase	Clinoclase	Ganophyllite
Anthophyllite*	Clinochrysotile	Genthelvite
Antigorite	Clinohedrite	Gersdorffite
Aragonite	Clinohumite	Gerstmannite
Arsenic	Clinozoisite	Glaucochroite
Arseniosiderite	Conichalcite	Goethite
Arsenopyrite	Connellite	Gold
Atacamite	Copper	Goldmanite
Augite	Corundum	Graphite
Aurichalcite	Covellite	Grenockite
Austinite	Cryptomelane	Grossular
Azurite	Cuprite	Groutite
	Cuspidine	Grovesite
Bakerite		Guerinite
Bannisterite	Datolite	Gypsum
Barite	Descloizite	
Barium-pharmacosiderite	Devilline	Halloysite*
Barylite	Digenite	Halotrichite
Barysilite	Diopside	Hancockite
Bassanite	Djurleite	Hardystonite
Baumhauerite	Dolomite	Hastingsite
Baumite	Dravite	Hauckite
Bementite	Dypingite	Hausmannite
Berthierite		Hawleyite
Biotite	Edenite	Hedenbergite
Birnessite	Epidote	Hedyphane
Bornite	Epsomite	Hematite
Bostwickite	Erythrite	Hematolite-like-mineral
Brandtite	Eserite	Hemimorphite
Brochantite	Euchroite	Hendricksite
Brookite	Eveite	Hercynite
Brucite		Hetaerolite
Brunsvigite		Heulandite
Bultfonteinite		Hexahydrite
Bustamite		

---

Hodgkinsonite	Molybdenite	Siderite
Holdenite	Monohydrocalcite	Sillimanite
Huebnerite	Mooreite	Silver
Humite	Muscovite	Sjogrenite
Hyalophane	Nasonite	Skutterudite
Hydrohetaerolite	Natrolite	Smithsonite
Hydromica*	Nelenite	Sonolite
Hydrotalcite	Neotocite	Spessartine
Hydroxyapophyllite	Niahite	Sphalerite
Hydrozincite	Newberyite	Spinel
Illite	Nickeline	Starkeyite
Ilmenite	Nontronite	Sterlinghillite
Jacobsite	Norbergite	Stibnite*
Jarosewichite	Ogdensburgite	Stilbite
Jennite-like mineral	Ojuelaite	Stilpnomelane
Jerrygibbsite	Orthoclase	Strontianite
Johannsenite	Oyelite*	Sulfur
Johnbaumite	Pararammelsbergite	Sussexite
Kaolinite	Parasymplesite	Svabite
Kentrolite*	Pargasite	Synadelphite
Kittatinnyite	Parsettenite*	Talc
Koettigite	Pectolite	Talmsessite*
Kolicite	Pharmacosiderite	Tennantite
Kraisslite	Phlogopite	Tephroite
Kutnohorite	Picropharmacolite	Thomsonite
Larsenite	Pimelite	Thorite*
Laumontite	Powellite	Thortveitite
Lawsonbauerite	Prehnite	Tilasite
Lead	Pumpellyite	Tiroadite
Legrandite	Pyrite	Titanite
Lennilenapeite	Pyroaurite	Todorokite
Leucophoenicite	Pyrobelonite	Torreyite
Linarite	Pyrochroite	Tremolite
Liroconite	Pyrophanite	Turneaureite
Loellingite	Pyroxmangite	Tyrolite-like mineral
Loseyite	Pyrrhotite	Uraninite
Magnesiohornblende	Quartz	Uranophane
Magnesoriebeckite	Rammelsbergite	Uranospinite
Magnesium-chlorophoenicite	Realgar	Uvite
Magnetite	Retzian - (La)	Vesuvianite
Magnussonite	Retzian - (Nd)	Wallkilldellite
Malachite	Rhodochrosite	Willemite
Manganaxinite	Rhodonite	Wollastonite
Manganberzeliite	Richterite	Woodruffite
Manganese-hoernesite	Riebeckite	Wurtzite
Manganhumite	Roebingite	Xonotlite
Manganosite	Romeite	Yeatmanite
Manganite	Rosasite*	Yukonite
Manganpyrosmalite	Roweite	Zinalsite
Marcasite	Rutile	Zincite
Margarite	Safflorite	Zinkenite
Margarosanite	Sarkinite	Zircon
Marsturite	Sauconite	
Mcallisterite	Schallerite	
Mcgovernite	Scheelite	
Meionite	Schorl	
Melanterite*	Scorodite	
Metalodevite	Seligmannite	
Metazeunerite	Sepiolite	
Microcline	Serpierite	
Mimetite		
Minehillite		

---

\* reported but not confirmed  
with certainty.



**THE SUSSEX SOURCE**

Sussex County's Full Service Bank  
for People, Business & Industry.

Brokerage and Trust Departments  
for Added Customer Convenience.



**THE SUSSEX COUNTY STATE BANK**

**MAIN OFFICE:**

Member F.D.I.C.

**399 Route 23, Franklin, NJ 07416 • (201) 827-2404**

**BRANCH OFFICES:**

**Sparta, Vernon and Montague**

**EQUAL OPPORTUNITY LENDER AND EQUAL HOUSING LENDER**



# Minerals Unique To Franklin and Sterling Hill

BAUMITE	$(\text{Mg}, \text{Mn}, \text{Fe}, \text{Zn})_3 (\text{Si}, \text{Al})_2 \text{O}_5 (\text{OH})_4$
BOSTWICKITE	$\text{CaMn}^{3+}_6 \text{Si}_3 \text{O}_{16} \cdot 7\text{H}_2\text{O}$
CHARLESITE	$\text{Ca}_6 (\text{Al}, \text{Si})_2 (\text{SO}_4)_2 [\text{B} (\text{OH})_4] (\text{OH})_{12} \cdot 26\text{H}_2\text{O}$
CHLOROPHOENICITE	$\text{Mn}_3 \text{Zn}_2 (\text{OH})_6 [\text{As}_0.5 \text{H}_{0.5} (\text{O}, \text{OH})_3]_2$
ESPERITE	$(\text{Ca}, \text{Pb}) \text{ZnSiO}_4$
GERSTMANNITE	$(\text{Mg}, \text{Mn})_2 \text{ZnSiO}_4 (\text{OH})_2$
HANCOCKITE	$(\text{Pb}, \text{Ca}, \text{Sr})_2 (\text{Al}, \text{Fe}^{3+})_3 (\text{SiO}_4)_3 (\text{OH})$
HARDYSTONITE	$\text{Ca}_2 \text{ZnSi}_2 \text{O}_7$
HAUCKITE	$(\text{Mn}, \text{Mg})_{24} \text{Zn}_{18} \text{Fe}^{3+}_3 (\text{SO}_4)_4 (\text{CO}_3)_2 (\text{OH})_{81}$
HENDRICKSITE	$\text{K} (\text{Zn}, \text{Mg})_3 \text{Si}_3 \text{AlO}_{10} (\text{OH})_2$
HODGKINSONITE	$\text{Zn}_2 \text{Mn} (\text{SiO}_4) (\text{OH})_2$
HOLDENITE	$(\text{Mn}, \text{Mg})_6 \text{Zn}_3 (\text{OH})_8 (\text{AsO}_4)_2 (\text{SiO}_4)$
JAROSEWICHITE	$\text{Mn}_2 \text{Mn}^{3+} (\text{AsO}_4) (\text{OH})_6$
JERRYGIBBSITE	$\text{Mn}_9 (\text{SiO}_4)_4 (\text{OH})_2$
JOHNBAUMITE	$\text{Ca}_5 (\text{AsO}_4)_3 (\text{OH})$
KITTATINNYITE	$\text{Ca}_4 \text{Mn}^{3+}_4 \text{Mn}^{2+}_2 \text{Si}_4 \text{O}_{16} (\text{OH})_8 \cdot 18\text{H}_2\text{O}$
KOLICITE	$\text{Mn}_7 \text{Zn}_4 (\text{AsO}_4)_2 (\text{SiO}_4)_2 (\text{OH})_8$
KRAISLITE	$\text{Fe}^{3+}_2 \text{Mg}_4 \text{Mn}_4 \text{Zn}_6 (\text{AsO}_4)_6 (\text{AsO}_3)_4 (\text{SiO}_4)_{12} (\text{OH})_{36}$
LAWSONBAUERITE	$(\text{Mn}, \text{Mg})_9 \text{Zn}_4 (\text{SO}_4)_2 (\text{OH})_{22} \cdot 8\text{H}_2\text{O}$
LENNILENAPEITE	$\text{K}_{6-7} (\text{Mg}, \text{Mn}, \text{Zn}, \text{Fe})_{48} (\text{Si}, \text{Al})_{72} (\text{O}, \text{OH})_{216} \cdot 16\text{H}_2\text{O}$
LOSEYITE	$(\text{Mn}, \text{Mg})_4 \text{Zn}_3 (\text{CO}_3)_2 (\text{OH})_{10}$
MAGNESIUM-CHLOROPHOENICITE	$(\text{Mg}, \text{Mn})_3 \text{Zn}_2 (\text{OH})_6 [\text{As}_0.5 \text{H}_{0.5} (\text{O}, \text{OH})_3]_2$
MARSTURITE	$\text{Mn}_3 \text{CaNaHSi}_5 \text{O}_{15}$
MCGOVERNITE	Complex $\text{Mg}, \text{Mn}, \text{Zn}, \text{Fe}^{3+}$ arsenosilicate
MINEHILLITE	$\text{K}_{2-3} \text{Ca}_{28} [\text{Zn}_4 \text{Al}_4 \text{Si}_{40} \text{O}_{112} (\text{OH})_4] (\text{OH})_{12}$
MOOREITE	$\text{Mg}_9 \text{Mn}_2 \text{Zn}_4 (\text{SO}_4)_2 (\text{OH})_{26} \cdot 8\text{H}_2\text{O}$
NELENITE	$\text{Mn}_{16} \text{Si}_{12} \text{O}_{30} (\text{OH})_{14} [\text{As}^{3+}_3 \text{O}_6 (\text{OH})_3]$
OGDENSBURGITE	$\text{Ca}_3 \text{ZnFe}^{3+}_6 (\text{AsO}_4)_5 (\text{OH})_{11} \cdot 5\text{H}_2\text{O}$
RETZIAN - (La)	$\text{Mn}_2 \text{La} (\text{AsO}_4) (\text{OH})_4$
RETZIAN - (Nd)	$\text{Mn}_2 \text{Nd} (\text{AsO}_4) (\text{OH})_4$
SCHALLERITE	$\text{Mn}_{16} \text{Si}_{12} \text{O}_{30} (\text{OH})_{14} [\text{As}^{3+}_3 \text{O}_6 (\text{OH})_3]$
STERLINGHILLITE	$\text{Mn}_3 (\text{AsO}_4)_2 \cdot 4\text{H}_2\text{O}$
TORREYITE	$(\text{Mg}, \text{Mn})_9 \text{Zn}_4 (\text{SO}_4)_2 (\text{OH})_{22} \cdot 8\text{H}_2\text{O}$
TURNEAUREITE	$\text{Ca}_5 (\text{AsO}_4)_3 \text{Cl}$
WALLKILLDELLITE	$\text{Ca}_4 \text{Mn}^{2+}_6 \text{As}^{5+}_4 \text{O}_{16} (\text{OH})_8 \cdot 18\text{H}_2\text{O}$
YEATMANITE	$[\text{Mn}_5 \text{Sb}_2] [\text{Mn}_2 \text{Zn}_8 \text{Si}_4] \text{O}_{28}$



HOMES — LOTS — ACREAGE

LAND INVESTMENT

ONE OF SUSSEX COUNTY'S LEADING REALTORS



Hamburg Corner Shops  
Rt. 23 & 94, Hamburg, N.J.

Tel.: 827-6500





# Fluorescent Minerals of Franklin and Sterling Hill, N. J.

A 1985 CHECK-LIST BASED ON OBSERVATIONS BY RICHARD C. BOSTWICK

*The fluorescence of most local minerals is brightest under short wave ultraviolet light (SW). Species marked with an \*asterisk fluoresce brighter under long wave ultraviolet light (LW). Certain minerals fluoresce two colors under different wave-lengths; these are noted as follows: blue SW/cream LW. Unusual or rare fluorescent responses are listed in parentheses.*

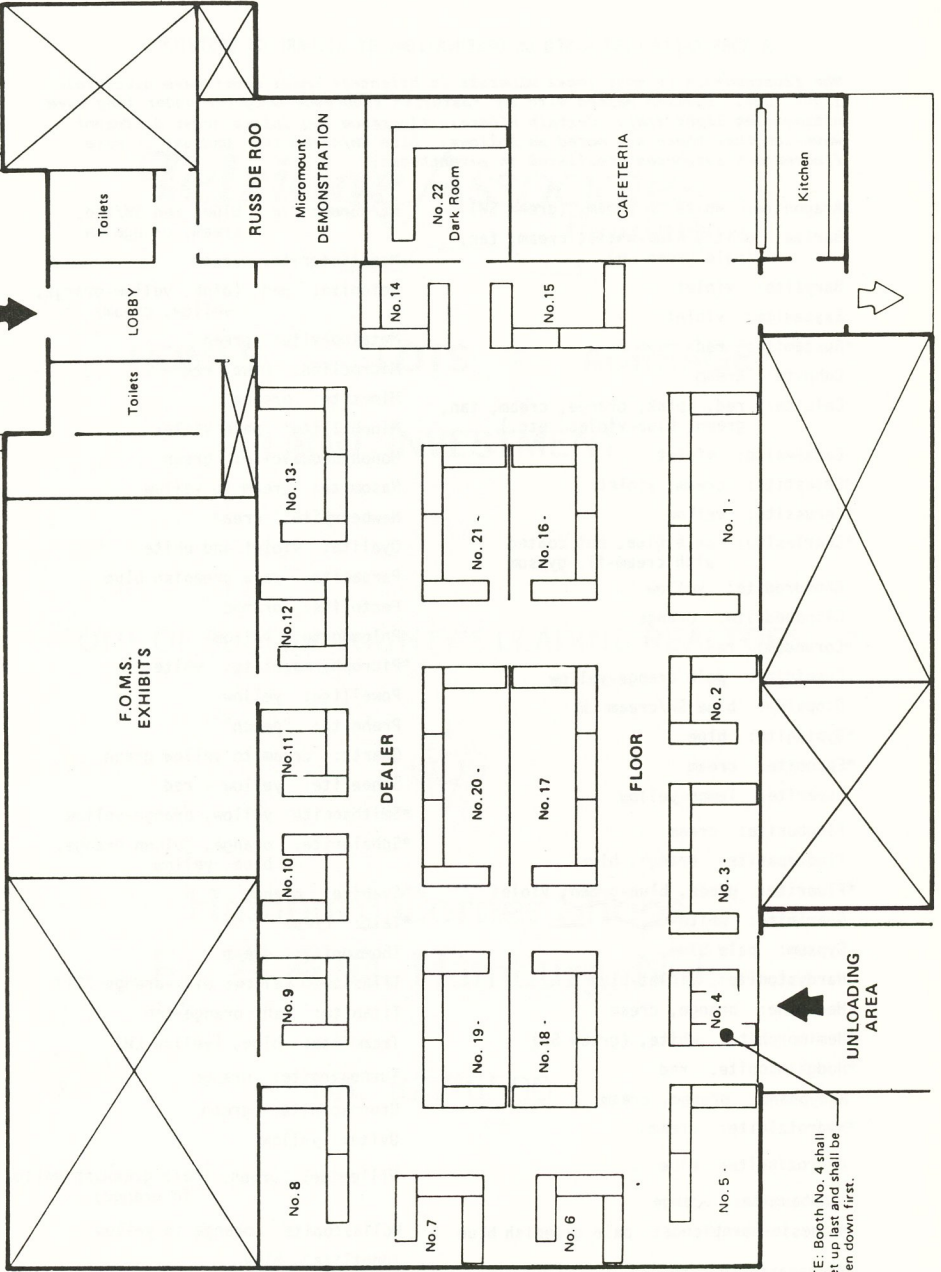
- |  |   |
|--|---|
| *Aragonite: white to cream, (green SW)                             | Margarosanite: blue, red SW/red, cream, orange LW   |
| Barite: white, blue-white, cream, tan, (pale green LW)             | Mcallisterite: cream                                |
| Barylite: violet   | Meionite: red, (pink, yellow-orange, yellow, cream) |
| Bassanite: violet  | Metalodevite: green                                 |
| *Bustamite: red  | Microcline: blue, red                               |
| Cahnite: cream   | Mimetite: orange                                    |
| Calcite: red, (pink, orange, cream, tan, green, blue-violet, etc.) | Minehillite: pale violet                            |
| Canavesite: violet   | Monohydrocalcite: green                             |
| *Celestite: cream, violet  | Nasomite: cream to yellow                           |
| *Cerussite: yellow   | Newberryite: cream                                  |
| *Charlesite: pale blue, but coated with cream-fl. gypsum           | Oyelite: violet and white                           |
| Chondrodite: yellow  | Pargasite: pale greenish blue                       |
| Clinohedrite: orange   | Pectolite: orange                                   |
| *Corundum: red   | Phlogopite: yellow                                  |
| Cuspidine: pale orange-yellow                                      | *Picropharmacolite: white                           |
| Diopside: blue SW/cream LW   | Powellite: yellow                                   |
| *Dypingite: blue   | Prehnite: "peach"                                   |
| *Epsomite: cream   | Quartz: cream to yellow green                       |
| Esperite: lemon-yellow   | Scheelite: yellow - red                             |
| Fluoborite: cream  | *Smithsonite: yellow, orange-yellow                 |
| Fluorapatite: orange, blue   | *Sphalerite: orange, golden orange, blue, yellow    |
| *Fluorite: green, blue-green, violet                               | Svabite: orange                                     |
| Guerinite: white   | *Talc: cream  |
| Gypsum: pale blue  | Thomsonite: cream                                   |
| Hardystonite: violet-blue  | Tilasite: yellow, pink-orange (?)                   |
| Hedphane: orange, cream  | Titanite: tan, orange-tan                           |
| *Hemimorphite: white, (green SW)                                   | Tremolite: blue, (yellow LW)                        |
| *Hodgkinsonite: red  | Turneavreite: orange                                |
| Hedyphane: orange, cream   | Uranospinite: green                                 |
| *Hydrotalcite: cream   | Uvite: yellow                                       |
| Hydrozincite: blue   | Willemite: green, (pale greenish yellow to orange)  |
| Johnbaumite: orange  | Wollastonite: orange to yellow                      |
| Magnesio-hornblende: pale greenish blue                            | Xonotlite: blue                                     |
| Manganaxinite: red   | *Zincite: yellow                                    |
| Margarite: blue  | Zircon: orange                                      |

FRANKLIN-STERLING HILL MINERAL SHOW  
 KIWANIS CLUB OF FRANKLIN  
 Franklin, New Jersey

1983

National Guard Armory

MAIN ENTRANCE



NOTE: Booth No. 4 shall be set up last and shall be broken down first.

Scale: 1/16" = 1'-0"

Drill Floor 60' X 120'

BUS PICK-UPS

---

## MINERAL DEALERS ATTENDING THE 1985 FRANKLIN-STERLING MINERAL SHOW

1. VICTOR YOUNT, Rt. 5, Box 188, Warrenton, VA 22186
2. EXCALIBUR MINERAL CO., 7 Grover Road, Dover, NJ 07801
3. MERKER MINERALS, 416 Bowen Street, Dayton, OH 45410
4. WILLIS EARTH TREASURES, Prospect St., Box 393, Stewartsville, NJ 08886
5. GILMAN'S, E. Durham, Box 103, Hellertown, PA 18055
6. HORN MINERALS, 263 No. Country Road, Smithtown, NY 11787
7. AURORA MINERAL CORP., 81 West Merrick Rd., Freeport, NY 11520
8. THE SILVER PICK, 1682 St. John's Ave., Merrick, NY 11566
9. LAWRENCE H. CONKLIN, 62 St. John's Place, New Canaan, CT 06840
10. AKE L. ANDERSON, 31 Prospect St., Huntington, NY 11743
11. DAVID M. CRAWFORD, 1808 Harlem Blvd., Rockford, IL 61103
12. THE MINERAL CABINET, Box 814, New Providence, NJ 07974
13. THE ROCKSMITHS, 5th & Toughnut, Box 157, Tombstone, AZ 85638
14. THE GEMMERY, RD 3, Box 397, Sussex, NJ 07461
15. JIM'S GEMS, INC., 1581 Rt. 23S, Wayne, NJ 07470
16. SCHMITZ LAPIDARY, 120 Center Street, Pompton Lakes, NJ 07442
17. MARTINS MINERALS, Box 811, Willoughby, OH 44094
18. THE LESNICK'S, 8405 Rawhide Tr., Tucson, AZ 85715
19. HOWARD MINERALS, 2775 Bedford Ave., Brooklyn, NY 11210
20. ROBERTS MINERALS, Box 1267, Twain Harte, CA 95383
21. RAINBOW GEMCRAFT, 125-11 103rd Ave., Richmond Hill, NY 11419

---

875-6101



### **H & S CHEVROLET, Inc.**

NEW CARS — USED CARS — PARTS — RELIABLE SERVICE

ROUTE 23  
at the Traffic Light

2 WALLING AVE.  
SUSSEX, N. J.



Entertainment  
COUNTRY  
WESTERN

Entertainment

THURSDAY,  
FRIDAY,  
SATURDAY  
and SUNDAY

*Oldies but Goodies!*

LUNCH SPECIALS  
DAILY

Some Specialties  
of the House

- Roast Duck
  - Seafood delite
  - Scallops Mediterranean
  - Chefs Dinner Special's  
Daily
- Open 7 Days

**HAPPY HOUR**  
Mon. thru Fri. 4 'til 7 pm  
Kitchen open late every nite

Rt. 23, Franklin - 827-2090  
Major Credit Cards

**PRIME RIB SPECIAL**

**\$7.95**

Thursday thru Monday  
incls., Salad, Baked Potato,  
& Loaf of Fresh Bread

Come Dine & Dance in the  
Extension Room  
Friday & Saturday Evenings.

*Separate Salad Bar*  
*Also Available For Banquets,*  
*Parties and Meetings*  
*(up to 120 people)*

MEMBER WALLKILL VALLEY CHAMBER OF COMMERCE  
Plenty of parking available after 6 PM  
At C&W & K&K parking lots next to restaurant



ROUTE 517

McAFEE, N.J. 07428

(201) 827-6000



---

# SPEAKERS



SATURDAY:

October 5, 1985

1:00 P.M.

**BERNARD T. KOZYKOWSKI**

Past-President, FOMS.

"Mineral Collecting at Franklin"

3:00 P.M.

**NICK TROFIMUK**, Miner (ret.)

Franklin Mine, Franklin, N.J.

and

**JOHN KOLIC**, Miner

Sterling Mine, Ogdensburg, N.J.

"Mining and Minerals at Franklin and Sterling Hill —  
a comparison"

SUNDAY:

October 6, 1985

1:00 P.M.

**RUSS de ROO**, noted micromounter.

"Micro Minerals at Franklin"

---

*with Video Micro-screening by Walter Zabinski*

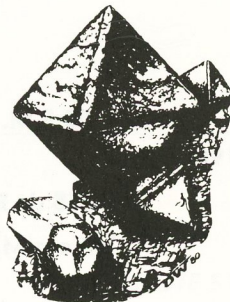
---

---

# Annual Franklin-Sterling Hill Mineral Show

## EXHIBITORS

JOHN L. BAUM  
PHILIP P. BETANCOURT  
RICHARD C. BOSTWICK  
JOSEPH CILEN  
ANDY DILATUSH  
HARVARD UNIVERSITY  
RUSS de ROO  
FRANKLIN-OGDENSBURG MINERALOGICAL SOCIETY  
RICHARD & ELNA HAUCK  
JOHN KOLIC  
JOHN KUZMA  
WARREN MILLER  
MORRIS MUSEUM  
PATERSON MUSEUM  
DON PHISTER  
RUTGERS UNIVERSITY  
STEVE SANFORD  
AL SMITH  
WILFRED R. WELSH



Exhibits courtesy of the Franklin-Ogdensburg Mineralogical Society, Inc.  
John Cianciulli - Exhibits Chairman

THREE REASONS

TO EAT AT FRANKLIN



**We're close by**

From the Armory:  
1 mile North of Route 23



**where your dollar gets a break everyday™**

827-6565

"Pizza is our Specialty"

## JOLLY PIZZA

RESTAURANT & PUB

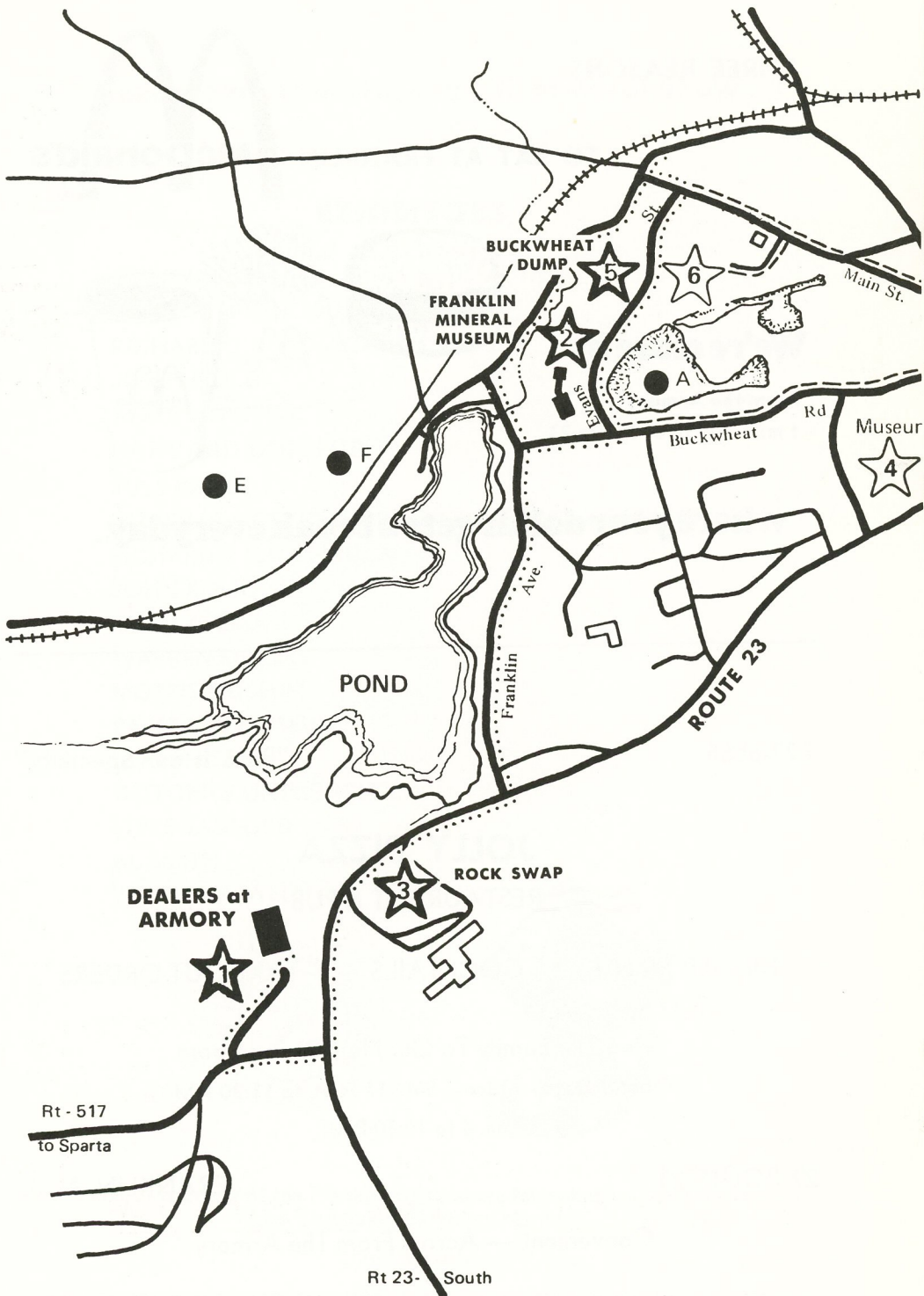
DINNER MENU \* COCKTAILS \* TAKE OUT ORDERS

Bring The Family To Our New Dining Room  
Open 7 Days — Mon. - Sat., 11 A.M. to 11:30 P.M.  
Sun. 4 to 10:30 P.M.

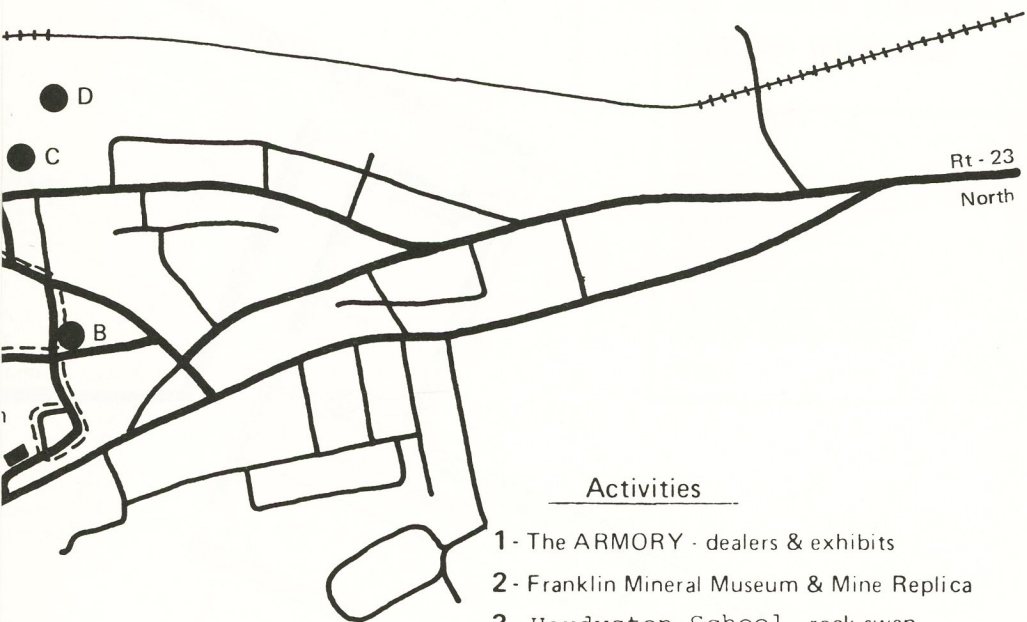
27 ROUTE 23

FRANKLIN, N. J.

Convenient — Across From The Armory







#### Activities

- 1 - The ARMORY - dealers & exhibits
- 2 - Franklin Mineral Museum & Mine Replica
- 3 - Hardyston School - rock swap
- 4 - Gerstmann Mineral Museum
- 5 - Buckwheat Mineral Dump - collecting
- 6 - Trotter Mineral Dump - collecting (fee)

#### Historical Sites \*

- A - Buckwheat Open-cut - early workings
- B - Parker Shaft - first major operating shaft
- C - Palmer Shaft - final operating shaft
- D - Abandoned Mill - in ruins
- E - Abandoned Quarry - largest in area
- F - Abandoned Quarry - served early furnaces

\* NOTE: All historical sites are OFF LIMITS - No Trespassing.

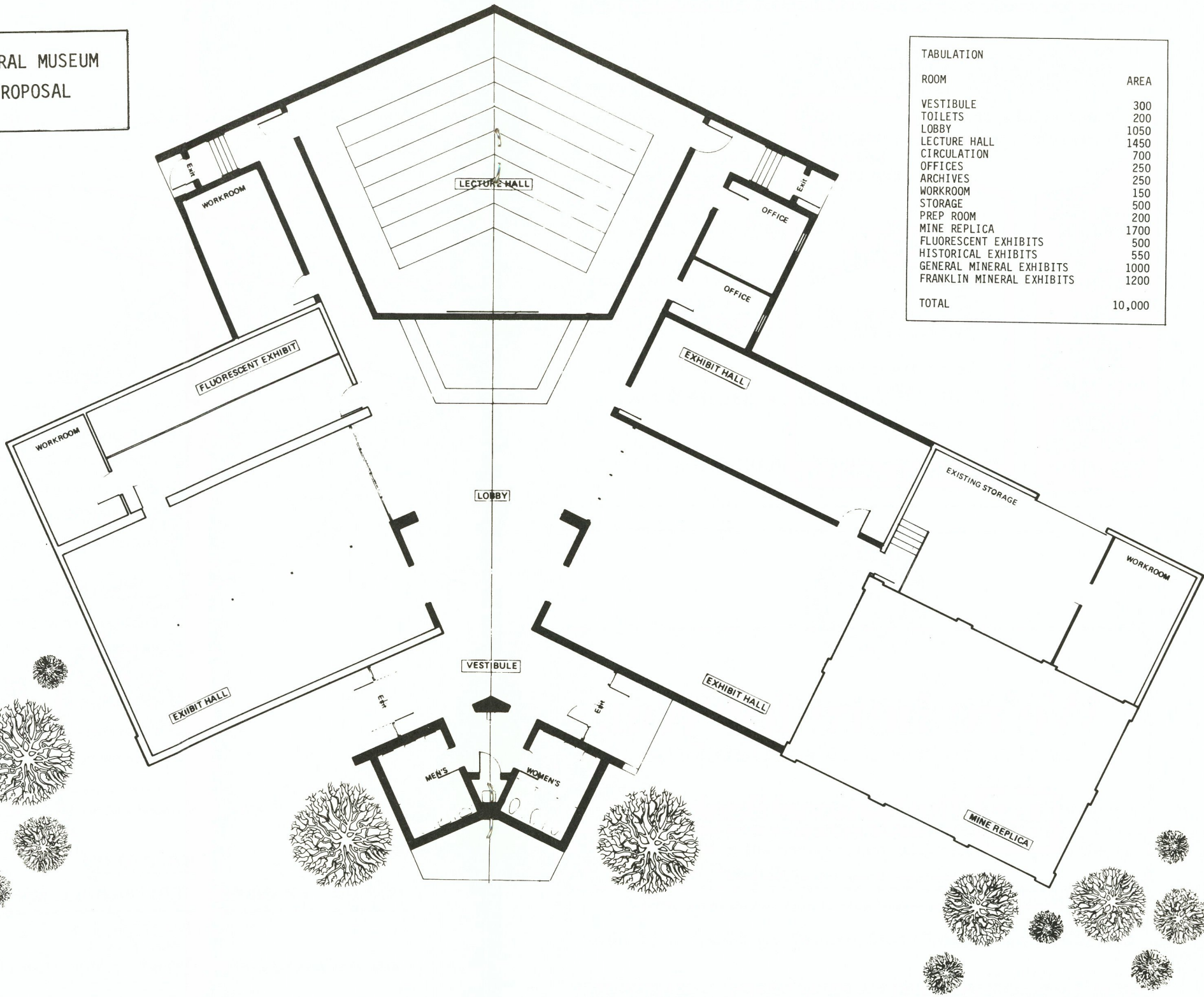
### DIRECTORY

## ANNUAL FRANKLIN - STERLING HILL MINERAL SHOW

*a KIWANIS project*

*map courtesy of Franklin-Ogdensburg Mineralogical Society, Inc.*

FRANKLIN MINERAL MUSEUM  
EXPANSION PROPOSAL



TABULATION	
ROOM	AREA
VESTIBULE	300
TOILETS	200
LOBBY	1050
LECTURE HALL	1450
CIRCULATION	700
OFFICES	250
ARCHIVES	250
WORKROOM	150
STORAGE	500
PREP ROOM	200
MINE REPLICA	1700
FLUORESCENT EXHIBITS	500
HISTORICAL EXHIBITS	550
GENERAL MINERAL EXHIBITS	1000
FRANKLIN MINERAL EXHIBITS	1200
<b>TOTAL</b>	<b>10,000</b>

the new  
**valley view**

Champagne Buffet Brunch  
Sunday 11:30 to 2:00 P.M.

**MOTEL  
LOUNGE  
RESTAURANT**



Dine with a fantastic  
View of the Valley

Upstairs Dining Room  
with excellent food.

Ground Floor Pub

**TV-AIR COND.  
SWIMMING  
POOL  
24 HR. DESK  
SERVICE**

**LUNCH**  
MON. - SAT.  
11:30 AM - 4:00 PM  
**DINNER**  
MON. THRU SUN.  
5:00 P.M. TO 9:30 P.M.  
FRI. & SAT.  
5:00 P.M. TO 10:00 P.M.

**ALL MAJOR  
CREDIT CARDS**

**729-3144**

**53 SPARTA AVE. SPARTA, N. J.**

Our special Thanks to  
Valley View guests staying  
for the Mineral Show week  
end.

Call us for those special  
occasions — extra guests,  
parties and business meet-  
ings.

**We're here for you.**



**The National Bank**  
**OF SUSSEX COUNTY** MEMBER FDIC

MEMBER FEDERAL DEPOSIT INSURANCE CORPORATION



If you can't find it  
anywhere, TRY . . .



**WILCOX**

Office Supplies & Equipment

FOR *Printing* WITH THE LOOK OF *Distinction*\*

6 MAIN STREET • HAMBURG, N. J. 07419 • 827-7474

RELIABLE and DURABLE - OVER 60 YEARS ON MAIN STREET



**FRANKLIN-OGDENSBURG  
MINERALOGICAL SOCIETY, INC.**

The Franklin-Ogdensburg Mineralogical Society, Inc., is an organization established to provide programs designed to benefit the community, the collector and those interested in the minerals, mineralogy and geology of the Franklin-Ogdensburg area of New Jersey.



Join us for: Field Trips, Lectures, Study Programs and Publications.



827-6565

"Pizza is our Specialty"

**JOLLY PIZZA**  
RESTAURANT & PUB

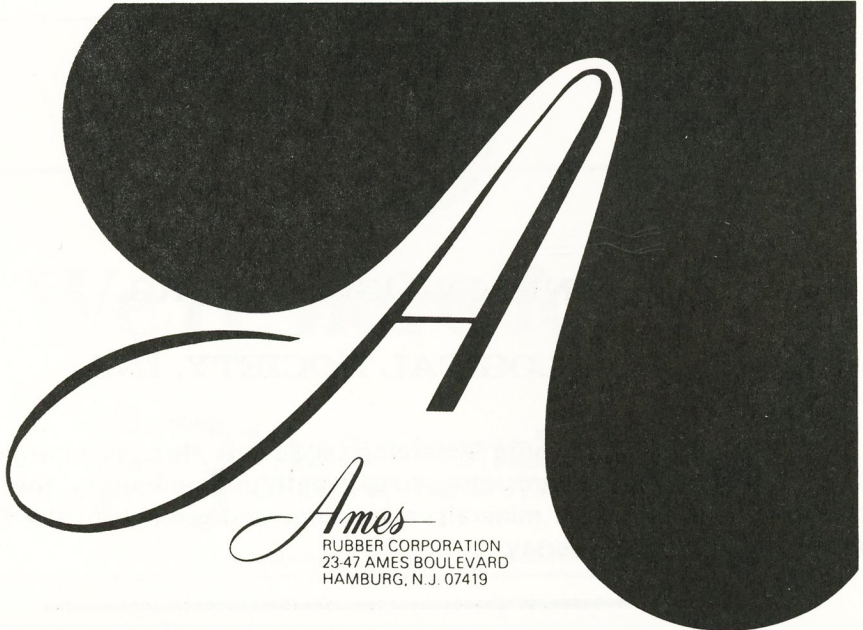
DINNER MENU \* COCKTAILS \* TAKE OUT ORDERS

Bring The Family To Our New Dining Room  
Open 7 Days — Mon. - Sat., 11 A.M. to 11:30 P.M.  
Sun. 4 to 10:30 P.M.

27 ROUTE 23

FRANKLIN, N. J.

Convenient — Across From The Armory



.....

# HAMBURG PLUMBING SUPPLY CO., INC.

*WHOLESALE PLUMBING & HEATING SUPPLIES*

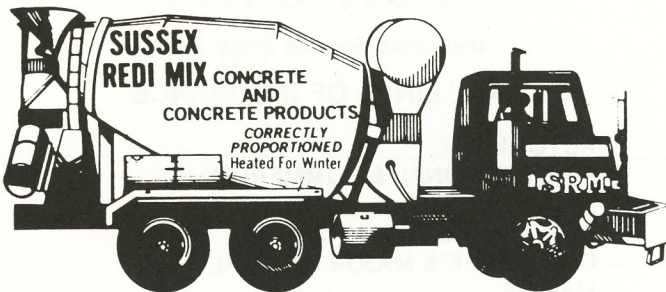
RT. #23 SOUTH & PRINCE ST.  
HAMBURG, N. J. 07419

201 - 827-2553

---

Compliments of . . .

## Vic & Chuck Marotta



**SEPTIC TANKS  
AND  
PARKING  
BLOCKS**



**875-3124**  
RT 23                      SUSSEX, N. J.



Members of the National and N.J. Waterwell Assoc.

**"IT MUST BE DUNN"**

Since 1946

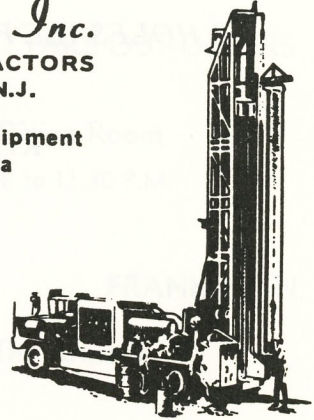
*Dunn & Dunn, Inc.*

**WELL DRILLING CONTRACTORS  
55 Walnut St., Sussex, N.J.**

**The Very Latest Drilling Equipment  
and Methods in the Area**

Allen V. Dunn, Pres.  
N.J. Master's License #746  
Phone 875-4503

Alan W. Clark, V. Pres.  
N.J. Master's License #772  
Phone 875-5347



(Office & Yard, Rt. 23)

---

*William H. Frey  
Co., Inc.*

Insurance Service Since 1901

**ALL LINES OF INSURANCE**

- AUTOMOBILE
- FIRE (PERSONAL & COMMERCIAL)
- HOMEOWNERS
- LIFE & ACCIDENT
- GROUP LIFE & MAJOR MEDICAL
- MARINE
- UMBRELLAS
- FIDELITY & SURETY BONDS (POWER OF ATTORNEY)
- FARMS
- COMMERCIAL & PERSONAL PACKAGE POLICIES

383 ROUTE 23, BOX 295

FRANKLIN, N.J. 07416

**(201) 827-9720**



# National Community Bank of New Jersey

*"New Jersey's PREEMINENT  
BANK — since 1895"*

Member F.D.I.C.

---

COMPLIMENTS

## **ACKERSON PUMP CO.**

BUNN ROAD, HAMBURG, N. J.

827-6088

---

827-9195

## **HAMBURG PHARMACY**

S. L. PHARMACY, INC. — STEPHEN BERGER, R.P.

ROUTE 23

HAMBURG, N. J. 07419

---



827-7327

NICK ZIPCO, Manager

## TROTTER MINERAL DUMP

Open 7 Days A Week — Year Round

MAIN STREET

FRANKLIN, N. J.



47 Church St.  
Franklin, N.J.  
827-7135  
Mon.-Sat. 8:00 to 4:30



61 Sparta Ave.  
Sparta, N.J.  
729-3141  
Mon.-Sat. 8:30 to 5:30  
Friday til 8:00 PM

(201) 875-3640

## SUSSEX SALES & SERVICE

Authorized Dealer for  
Products of Ford Motor Company  
FORD — MERCURY — FORD TRUCKS

ROUTE 23, P.O. BOX 385

SUSSEX, N. J. 07461

TEL: (201) 827-5740

樓 福 萬

**SZECHUAN GARDEN**  
CHINESE RESTAURANT

Szechuan, Mandarin and Cantonese Cuisine  
Orders to Take out

Shoprite Shopping Center  
Route 23—Franklin, N.J. 07416

JOHN and JULIANNA WITHEY

201-875-5438

## THE GEMMERY

HANDCRAFTED STERLING SILVER CHANNEL JEWELRY

ORIGINAL DESIGNS by JULIANNA

R.D. 3, BOX 397

SUSSEX, N. J. 07461

---

We Are Looking Forward to Seeing You At The

## FRANKLIN DINER

JACK and JOYCE CARROLL

ROUTE 23

FRANKLIN, N. J.

---

(201) 875-4191

(201) 875-7700

# SUSSEX MOTEL

Swimming Pool ★ Year-Round Temperature Control  
Cable T.V. ★ Efficiency Units



Route 23, Sussex  
New Jersey 07461

---

Office: (201) 827-7000

**Regional**

HARDEN FUEL OIL CO.

FUEL OIL — GASOLINE

P.O. BOX H

FRANKLIN, N. J. 07416

---

---

## MURRAY'S MINI MARKET

FULL SERVICE DELI & CATERING

Open 7 A.M. - 11 P.M. — 7 Days

342 MAIN STREET

OGDENSBURG, N. J.

---

## Franklin/Ogdensburg Minerals

rare species  
old classics  
new finds

SEND FOR FREE PRICE LIST

HOWARD MINERALS  
Box 56, Vanderveer Sta.  
Brooklyn, N.Y. 11210  
(718) 434-8538

---

827-9141



390 RUTHERFORD AVE.

FRANKLIN, N. J.

---

(201) 827-4666

## **94** MOTOR LODGE

LUXURIOUS ACCOMMODATIONS

REASONABLE RATES

5 Min. Action Park

2 Min. Great Gorge Ski Resort

ROUTE 94

McAFEE, N. J. 07428

---



827-8081

# Village Peddler

REAL ESTATE INC.

385 ROUTE 23

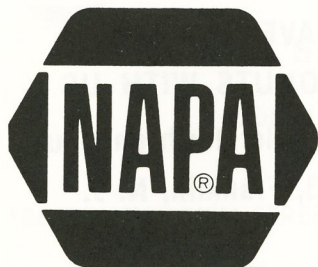
FRANKLIN, N.J.



# HAUCK'S COLLECTIBLES

*Elna and Richard Hauck*  
*8 Rowe Pl., Bloomfield, N. J. 07003*

*(201)743-1030*



# Winters Auto Parts

SUSSEX & FRANKLIN, N. J.

PINE ISLAND, N.Y.

875-3147 • 827-3700 • 914-258-4041

(201) 875-9923

# Rolling Hills MOTEL

Cable T.V. ★ Year-Around Temperature Control



ROUTE 23  
SUSSEX, N.J. 07461

---

# GILMAN'S

"AT THE CAVE"

Box 103

Hellertown, Pa. 18055

YOUR COMPLETE LAPIDARY SUPPLY HOUSE

Phone 215/838-8767

Open every day 9 a.m. to 8:00 p.m.

---

Phone: 827-9980

Doug Agne, Prop.

## OGDENSBURG TEXACO SERVICENTER

TUNE UP & ELECTRICAL SPECIALISTS — BRAKE & FRONT END WORK

MAJOR & MINOR REPAIRS — AIR CONDITIONER SERVICE

13 MAIN STREET

OGDENSBURG, N. J. 07439

---

# DUNKIN' DONUTS®

Save 50¢

Ask For The Show Special — Doz. Donuts \$2.29

---

HAVE COFFEE &  
DONUTS WITH US —  
1 Mile North on Route  
23, Franklin, N. J.



AMERICAN  
GREETINGS  
PRESCRIPTIONS

Delivery Service

Russell Stover  
CANDIES

- Gifts
- Baby Needs
- Cosmetics
- Jewelry
- Discount Film Processing
- Photo Supplies
- Newspapers, Magazines
- Lottery Tickets
- Sick Room Supplies & Rentals

MON-FRI 9-9  
SAT 9-6 SUN 9-1

Prescription  
Plans Honored

24 Hour **R** Emergency Service



827-7107



RT. 23 (Next to Rockaway Sales) FRANKLIN

---

---

## THE MINERAL CABINET

CHOICE MINERALS FROM FRANKLIN, PATERSON, WORLD WIDE.

SEND US YOUR WANT LISTS. COLLECTIONS PURCHASED.

BROKER SERVICES FOR COLLECTION SALES.

CALL. (201) 464-7235    WRITE: P.O. BOX 814, NEW PROVIDENCE, N.J.

---

Ron & Susie Martin

(717) 692-4914

### MARTIN MINERALS, INC.

- Certified Gemologist    • Registered Mineralogist
- Gemstone Investment Counseling    • President American Gem-Fossil
- Mineral Dealer's Association    • Past President P.S.A.A., P.A.A., A.F.M.S:

**Mail Order & Shows Only — Wholesale to Dealers**

P.O. BOX 392

MILLERSBURG, PA. 17061

---



827-7943

### EARL'S OGDENSBURG GULF

COMPLETE AUTO REPAIRS - U-HAUL

186 SOUTH MAIN STREET

OGDENSBURG, N.J. 07439

---



### THE SILVER PICK

Karl & Anne Vossbrinck  
1682 St. Johns Avenue  
N. Merrick, New York  
516-FR 8-9051

Gems & Minerals  
Lapidary Supplies  
Cutting Materials

---

Tel. 827-7670

**HAMBURG HARDWARE CO.**

HARDWARE—ELECTRICAL SUPPLIES  
PLUMBING SUPPLIES—DE VOE PAINT

**The Old Fashion Store With Personalize Service**

1 MAIN STREET

HAMBURG, N. J.

---



**upstream farm**

CORKHILL ROAD FRANKLIN, N. J. 07416

Steve Demas

**BREEDING THE STANDARDBRED RACE HORSE!**

Res. (201) 827-2986

Farm (201) 827-9113

---

**RAINBOW GEMCRAFT**

BEST QUALITY: GEM ROUGH FINISHED GEMSTONES  
BETTER JEWELRY MINERAL SPECIMENS

At Your Service at the Franklin Show, and at:

Pikesville, Md. .... October 26-27, 1985

Garden City, L.I., N.Y. .... November 16-17, 1985

Hempstead, N.Y. .... March 1 - 2, 1986

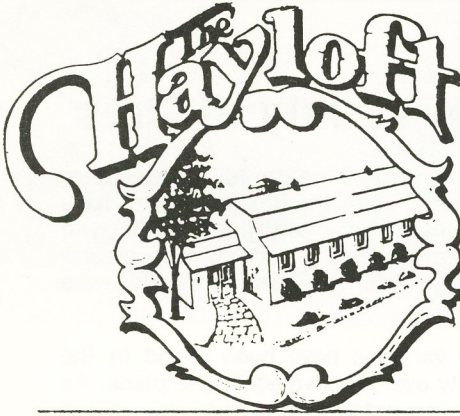
BETTY & ERNIE NAPLES

RICHMOND HILL, N.Y.

---

**WILLIAM E. KULSAR, P.A.**

CERTIFIED PUBLIC ACCOUNTANT



Early Bird Specials, Sun. thru Fri.

**SUNDAY BRUNCH**  
10 A.M. TO 1 P.M.

**LIVE  
LOBSTERS**

Fine Dining in The  
**RUSTIC ATMOSPHERE**  
of a Refurbished  
**DAIRY BARN**

Sussex County's  
Premier Restaurant  
and Night Club  
Open Daily for Lunch  
Dinner & Cocktails

VISA



**(201) 827-2949**

AMERICAN EXPRESS

Take Rt. 80 W. to 15 N. to 94 E. (Towards Hamburg), Hardyston Twp.  
RT. 94, HARDYSTON, N.J. (Between Hamburg & McAfee)

## *In Appreciation*

THE KIWANIS CLUB of FRANKLIN

Expresses its thanks to the Mineral Show Exhibitors,  
Dealers, and Advertisers and to all, who through  
their dedication have contributed their time and  
talents to make the Mineral Show a great success.



JOIN  
KIWANIS

write:

Membership Committee  
FRANKLIN KIWANIS  
BOX 76  
FRANKLIN, N.J.





---

## FRANKLIN: Unique in Variety of Ores

Franklin Borough, "The Fluorescent Mineral Capital of the World" continues to excite the interest of mineral collectors, even though mining operations have ceased for over fifteen years. The opportunities to view and perhaps discover new mineral specimens unique to this area continue to attract an even greater stream of visitors to these exhibits (during 1976 two new minerals were recorded).

More than 250 species and more than 280 varieties have been found in the Franklin/Ogdensburg area, the greatest variety ever discovered in one place. As of 1976, twenty-one of these minerals have been found nowhere else in the world.

The wealth of mineral specimens at Franklin owes its abundance to a sequence of geological events never duplicated elsewhere. A billion years ago an ocean covered the area, and in quiet deep spots, iron, zinc and manganese accumulated and were incorporated into a thickening sequence of sediments and submarine lavas. Over 800 million years ago, depth of burial and folding transformed the rocks and their enclosed minerals into the layered materials we see today. Many of the rare minerals were formed during the first period of mountain building.

Subsequently, weathering of the new land down to sea level developed a beach at Franklin some 550 million years ago, and fragments of the newly exposed mineral deposit or ore body were incorporated in the beach sands. Again the land sank in the classic geologic pattern of submergence, deposition, uplift and erosion. Perhaps four periods of mountain building took place during repetitions of the sequence, each with an opportunity for deep fractures to allow introduction of new solutions and vapors to add to and alter the earlier minerals.

For the last 100 million years, the Franklin area has been undergoing erosion as the high ground of New Jersey has washed down the rivers and the coast to form Southern New Jersey and fairly recently, a million to 10,000 years ago, glaciation has aided the process exposing the ore bodies for discovery and mining. Meanwhile, minerals continue to form where weathering can alter the older minerals. The story is far from completed, and new minerals are being discovered continually.

The Franklin ore deposits were first discovered in the middle 1600's. These deposits continued to baffle the mining experts for the next two centuries because they were unlike any other known mineral deposits in the world.

Its principal metals are zinc, manganese and iron. All three are present as a complex oxide in the mineral known as Franklinite (named in honor of Benjamin Franklin). Zinc is also here as a silicate, known as Willimite (so named in honor of William, King of England), and as an oxide known as Zincite. Some veins contain all three of these minerals in a complex mixture while other veins consist of the three minerals in almost their pure form. The ore body is also quite unique in that it is relatively free from other heavy metals such as lead, cadmium and copper which are usually found in zinc ore deposits.

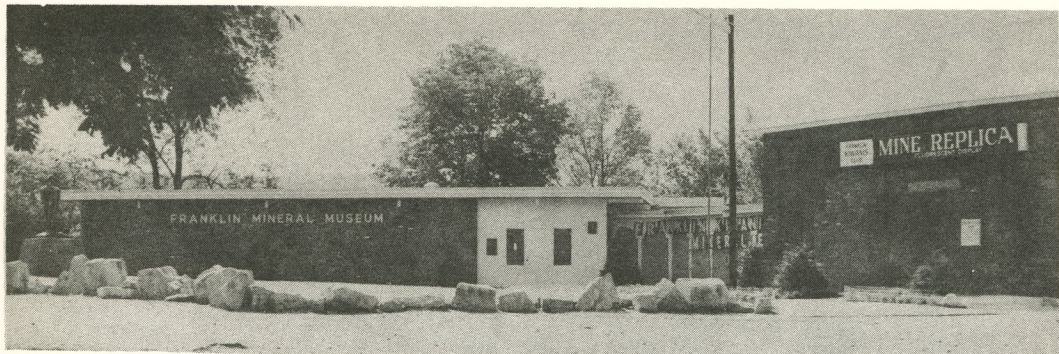


Photo by ERNIE DUCK

## THE FRANKLIN MINERAL MUSEUM and MINE REPLICA

SEE THE WORLD FAMOUS FRANKLIN MINERALS, MINING HISTORY, FLUORESCENT DISPLAY AND A TRUE REPLICA OF THE MINING OPERATIONS HUNDREDS OF FEET BELOW THE SURFACE OF THE EARTH.

SALES AREA: — Mineral Lights, Specimens,  
Souvenirs and jewelry available.

---

### NEW OPERATING SCHEDULE

SPRING (April 15 - June 30)\* and FALL (Sept. 1 - Nov. 15)

Monday: Closed. Tues., Wed., Thurs.: Groups, by Reservation.

Fri. & Sat.: Open to Public 10 a.m. - 4 p.m.

Sunday: Open to Public 12:30 p.m. - 4:30 p.m.

SUMMER (July, Aug.): Mon., Tues.: Closed.

Wed. thru Sat.: Open to Public 10 a.m. - 4 p.m.

Sunday: Open to Public 12:30 p.m. - 4:30 p.m.

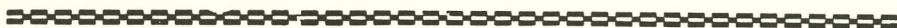
\*Closed Easter

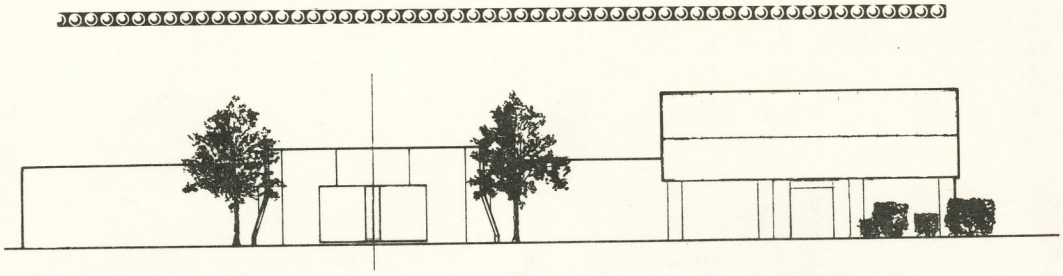


*This is a Franklin Kiwanis sponsored,  
non-profit, Community project.*

*Gifts and donations to the Museum are tax deductible.*

**6B Evans Street, Box 54, Franklin, N. J. 07416**  
**(201) 827-3481**





## **Help Build A Greater Franklin Mineral Museum Support The Museum Building Fund Campaign**

*The Board of Trustees of the Museum has decided to enlarge and improve the Museum to provide for:*

- *New collections*
- *To expand activities to attract new collections*
- *To preserve the extraordinary history of the Franklin-Sterling mineralogy,*
- *To enhance the educational services which the Museum can provide for a broader understanding of the earth sciences -*
- *In short to make the Museum a focus for the preservation and understanding of our unique heritage.*

The start of the fund raising campaign will be announced shortly. For more information talk to any member of the Museum or the Kiwanis Club or fill out the card inserted in this booklet and deposit it in one of the receptacles provided at this exhibit.

---

*See center fold for additional information.*