

18th ANNUAL

Franklin - Sterling

**MINERAL
EXHIBIT**

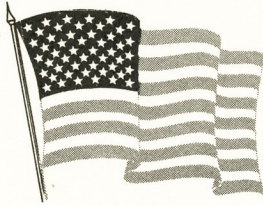
The Fluorescent Mineral Capitol of the World

October 12 & 13, 1974



SPONSORED BY
KIWANIS CLUB OF FRANKLIN
FRANKLIN, NEW JERSEY

PRICE 50¢



This Book is Dedicated To

The ASTRONAUTS and

The NATIONAL AERONAUTICS

and SPACE ADMINISTRATION

The Kiwanis Club of Franklin and the Franklin Mineral Museum express their appreciation and gratitude to the Officers and men of the Goddard Space Flight Center, who granted permission for the loan of the Lunar Sample for our 18th Annual Mineral Show.

We salute with pride, the Apollo 12 Astronauts Gordon, Al Bean and Charles Conrad, who made the successful trip to the moon in the Rocket "Intrepid" and brought back the Lunar Sample displayed at the Museum.

A special salute to Astronauts Virgil Grissom, Ed White and Roger Chaffee who lost their lives in a flash fire prior to their scheduled flight.

The Apollo 12 Moon Mission occurred in November, 1969. The Lunar Sample is a priceless scientific specimen. It is a sample of basic igneous formation and is sealed in a dry, nitrogen atmosphere, viewed through a pressurized optical glass container.

When viewing the Lunar Sample, it should be remembered that it took many years of scientific research, billions of dollars, the combined efforts of the greatest minds in scientific research, many early failures, (witnessed by the world on Satellite T.V.), before a trip to the moon and return was successful.

As you look at the "Moon Stone", you see an insignificant, dirty looking piece of stone, that if you should see it on a dirt road, you would kick it aside, but, it is priceless evidence that the United States of America has achieved the greatest Scientific Solar Achievement.

THE ORIGIN OF FRANKLIN-STERLING MINERALS

The wealth of mineral species found in the Franklin-Sterling area owes its abundance to an assortment of geological events seldom if ever duplicated elsewhere. A billion years ago sand, silt and carbonate were deposited on the bottom of a great sea reaching from New Jersey nearly to Hudson Bay. With these sediments were submarine lavas and accompanying hot springs. In quiet deep spots, iron, zinc and manganese accumulated and were incorporated into the thickening sequence. Over 800 million years ago, depth of burial and folding transformed the rocks and their enclosed ores into the layered materials we see today.

It was during this initial period of mountain building that such locally abundant minerals as franklinite, willemite, tephroite, rhodonite, feldspar, proyxene, hendricksite, magnetite, and much of the zincite was formed. Following elevation of the new land above the sea, erosion took place until the land was nearly level and the great cover of rock over the Franklin ore was removed. Some of the ore was incorporated into the beach sand that was deposited over the ore some 500 million years ago, and could be seen underground in the fossil beach prior to closing of the Franklin mine in 1954.

The new period of rock deposition starting with the beach at Franklin continued as the surface sank in the classic geologic pattern of submergence, deposition, uplift and erosion. Perhaps four periods of mountain building took place during the repetitions of the sequence, each with an opportunity for deep fractures to allow introduction of new liquids and vapors to add and alter the earlier minerals. Volcanos flourished in the vicinity 400 million years ago, and again 160 million years ago.

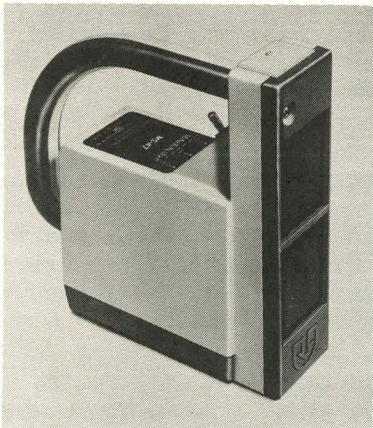
It is no wonder that the number of mineral species in the area continued to increase as various elements were added by solutions circulating through the interconnecting fault pattern. The deepest part of the ore at Sterling was invaded successively by magnesium, boron and sulfur giving origin to a host of additional minerals. The magnesium produced dolomite and serpentine, and zinc was released from the serpentinized willemite to recrystallize as zincite, and dissolved willemite formed radiating white willemite in dolomite veins.

For the last 100 million years or more, the Franklin-Sterling area has been undergoing erosion as the high ground of New Jersey has washed down the rivers and the coast to form southern New Jersey and fairly recently, a million to 10,000 years ago, continental glaciation has aided the process exposing the ore bodies for discovery and mining. Meanwhile, minerals continue to form. Until it was dried up by mining, the mud zone at Ogdensburg was growing aragonite crystal clusters, chalcophanite, and other exotic manganese oxides. At present, greenockite, hydrozincite and hemimorphite are forming underground and in the surface dumps.

While the greater part of nature's work in forming Franklin-Sterling minerals has been finished, the story is far from completed. New discoveries are being made and amateur and professional working together are writing the next chapter in Franklin-Sterling mineralogy.

ALL NEW

MINERALIGHT® Field Lamp



HIGHEST INTENSITY AT LOWEST COST

SHORT WAVE OR MULTI-BAND

FEATURES:

- **NEW RUGGED CYCOLAC* HOUSING**...light weight, super-strong molded CYCOLAC housing. So tough it is used in NFL football helmets. Won't stain, dent, peel, chip or rust. Virtually unbreakable. Impervious to weather. Color is molded clear through.
- **LIGHT WEIGHT** . . . weighs only 4½ lbs. with batteries.
- **SELF-CONTAINED FLASHLIGHT** . . . for your safety.
- **BATTERIES** . . . (2 required) standard 6 volt lantern batteries have 10 hours-plus life. Can't be ruined by faulty placement.
- **REMOVABLE FILTER FRAME** . . . snaps on or off easily for brighter phosphorescence and detection of rare earths.
- **NEW HANDLE** . . . reinforced 1 inch diameter wrap-around handle permits use of lamp at any angle.
- **SNAP-OPEN BATTERY COMPARTMENT** . . . for easy insertion.
- **ONE SWITCH** . . . on/off toggle switch for ultraviolet and flashlight. Both can't be on at same time to drain batteries.

See and buy these revolutionary new lamps from your MINERALIGHT Lamp dealers in Franklin, N. J.: Franklin Mineral Museum, 6B Evans St.; Herzenberg's Drug Store, 21 Main Street and Mrs. John Palsulich, 15 Green Street. Also available from MINERALIGHT dealers everywhere.

Mfd. by **ULTRA-VIOLET**  **PRODUCTS, INC.** SAN GABRIEL, CALIFORNIA

MINERAL SPECIES FOUND AT FRANKLIN/OGDENSBURG, N.J.

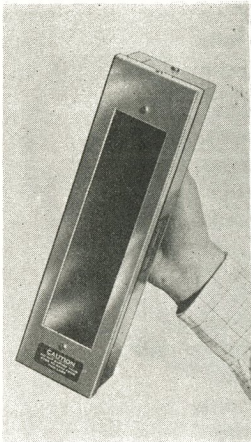
Edited by John L. Baum, Curator of The Franklin Mineral Museum, From Lists
Prepared by Clifford Frondel, Frank Edwards, David Cook, Ewald Gerstmann,
George Pigeon and John Baum. September 1974.

Acanthite	Bannisterite	Descloizite
Adamite	Barite	Devilleite
Allactite	Barylite	Djurleite
Allanite	Barysilite	Dolomite
Alleghanyite	Bementite	Epidote
Almandine	Berthierite	Epsomite
Amphibole	Bianchite	Erythrite
Actinolite	Biotite	Esperite
Anthophyllite	Birnessite	Epsomite
Barkevikite	Bixbyite	Ettringite
Byssolite	Bornite	Eveite
Cummingtonite	Brandite	Feitknechtite
Edenite	Brochantite	Ferroschallerite
Fluorendenite	Brookite	Flinkite
Enstatite	Bustamite	Fluorborite
Hastingsite	Cahnite	Fluorite
Magnesioriebeckite	Calcite	Franklinite
Pargasite	Carminite	Friedelite
Riebeckite	Celestite	Gageite
Tremolite	Celsian	Gahnite
Asbestos	Cerussite	Galena
Analcime	Chabazite	Ganophyllite
Anatase	Chalcocite	Gersdorffite
Andradite	Chalcophanite	Glaucocroite
Anglesite	Chalcopyrite	Goethite
Anhydrite	Chloanthite	Gold
Annabergite	Chloropal	Graphite
Anorthoclase	Chlorophoenicite	Greenockite
Barian Anorthoclase	Chondrodite	Grimaldite
Antimonian Groutite	Chrysocolla	Grossular
Apatite	Clinochlore	Groutite
Fluorapatite	Clinohedrite	Gypsum
Hydroxyapatite	Conicalcalcite	Hancockite
Apophyllite	Copper	Hardystonite
Aragonite	Corundum	Hausmannite
Arsenic	Covellite	Hedyphane
Arseniosiderite	Cryptomelane	Hematite
Arsenolite	Cuprite	Hemimorphite
Arsenopyrite	Cuproadamite	Hendricksite
Aurichalcite	Cuspidine	Hetaerolite
Axinite	Datolite	Heulandite
Ferroan	Datolite	
Manganooan	Botryolite	
Azurite		

Cont.

RAYTECH

Let's You See It Better



SUPERSTAR—The lamp preferred by the professional for Franklin fluorescent mineral identification. The exceptional radiation of the Superstar has in recent years extended the list of known Franklin fluorescents.

RAYTECTOR II—An outstanding, low cost, high intensity, completely portable light specially designed for field use. Powered by two inexpensive 6 volt lantern batteries.



RAYTECH INDUSTRIES, INC.
Post Office Box 84 - Stafford Industrial Park

Stafford Springs Conn. 06076 - Tel. (203) 684-4273

MINERAL SPECIES FOUND AT FRANKLIN/OGDENSBURG, N. J.

Hodgkinsonite	Manganberzeliite	Phlogopite
Holdenite	Manganbrucite	Plagioclase
Hopeite	Manganhedenbergite	Albite
Hortonolite	Manganite	Anorthite
Hyalophane	Manganosite	Oligoclase
Hydroandradite	Manganpyrosmalite	Pimelite
Hydrohausmannite	Marcasite	Pitticite
Hydrohetaerolite	Margarite	Powellite
Hydrozincite	Margarosanite	Prehnite
	Mcgovernite	Psilomelane
Idocrase	Melanterite	Pyrite
Idocrase	Metastrongite	Pyroaurite
Cyprine	Microcline	Pyrochroite
Illite	Barian Microcline	Pyrolusite
Ilmenite	Millerite	Pyromorphite
	Mimetite	Pyrophyllite
Jacobsite	Molybdenite	Pyroxene
	Mooreite	Augite
Kaolinite	Muscovite	Diopside
Kentrolite	Muscovite	Schefferite
Koninckite		Enstatite
Kottigite	Nasonite	Johannsenite
Kutnahorite	Natrolite	Pyrrhotite
	Nicolite	
Larsenite	Norbergite	Quartz
Lead		Agate
Legrandite	Oellacherite	Chalcedony
Leucophoenicite	Orpiment	Flint
Limonite	Orthoclase	Jasper
Linarite	Pararammelsbergite	Rock Crystal
Loellingite	Pectolite	Rose
Loseyite	Penninite	Smoky
Magnetite	Pharmacolite	
Magnesium chlorophoenicite	Pharmacosiderite	
Magnussonite		
Malachite		

Cont.

We thank you -- our advertisers!

The officers and members of the Franklin Kiwanis and the Franklin Mineral Museum, express our appreciation for contributing to the success of the Mineral Show. We encourage all to patronize our advertisers and tell them where you saw their ad.

Anderson Bros. Inc.

63 MAIN ST.
OGDENSBURG, N. J.

827-6971



ALUMINUM SIDING
GLASS PRODUCTS
HOME IMPROVEMENTS
CUSTOM HOME BUILDING
& DESIGN
BROADLOOM CARPETS

MINERAL SPECIES FOUND AT FRANKLIN/OGDENSBURG, N. J.

Rammelsbergite	Smithsonite	Tourmaline
Realgar	Sonolite	Dravite
Rhodochrosite	Spessartine	Schorl
Rhodonite	Sphalerite	Uraninite
Roebingite	Spinel	Uranophane
Roepperite	Stibnite	Uvarovite
Rosasite	Stilbite	Willemite
Roweite	Stilpnomelane	Wollastonite
Rutile	Sursassite	Woodruffite
Sarkinite	Sussexite	Wurtzite
Sauconite	Svabite	Xonotlite
Scapolite	Symplesite	Yeatmanite
Schallerite		Zinnsite
Scheelite	Talc	Zinc Alleghanyite
Serpierite	Tennantite	Zinc Fosterite
Serpentine	Tenorite	Zinc Manganese Brunsvigite
Antigorite	Tephroite	Zinc Manganese Humite
Chrysotile	Thomsonite	Zinc Manganese Pennine
Siderite	Thorite	Zinc Sonolite
Sillimanite	Titanite	Zincite
Silver	Todorokite	Zircon
Skutterudite	Torreyite	Zoisite

"MINERAL SHOWCASE"

*Free, Educational, Non-Profit Mineral Museum
Specimens from World Wide Localities*

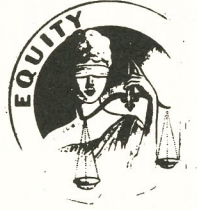
Hand Wrought Silver Jewelry *We Buy*
FRANKLIN MINERAL COLLECTIONS

LEE & JENNIE ARESON

Tel. (914) 343-5051

21 IRWIN AVENUE

MIDDLETOWN, N. Y. 10940



COMPLIMENTS

OF

Equity Savings

RT. 515

VERNON

764-4004

ROUTE 23

SUSSEX

875-4142

FLUORESCENT MINERALS OF THE FRANKLIN-STERLING AREA

- | | | |
|--------------------------|--------------------------|--------------------------|
| *Adamite—Yellow | Fluoredenite —Blue | Scapolite—Blue & Red |
| Apatite—Blue | *Fluorite—Green & Cream | Scheelite—Yellow & Blue |
| *Aragonite—Cream | Hardystonite—Purple | *Smithsonite—Cream |
| Axinite—Red | Hemimorphite— | *Sphalerite—Red & Blue |
| Barite—Blue to Cream | White, Green | Svabite—Red & Orange |
| Barylite—Blue | *Hodgkinsonite—Red | Tourmaline—Yellow |
| Calsite — | Hydrozincite—Blue-White | Tremolite—Blue White, |
| Red, Cream, Blue | Margarosanite—Blue-White | Green |
| *Cerussite—Yellow, Cream | Microcline—Blue-White | Willemite—Green & Yellow |
| Clinohedrite—Orange | Norbergite—Yellow | Wollastonite—Orange |
| *Corundum—Red | Pectolite—Orange | Xonotlite—Blue-White |
| Diopside—Blue, Cream | Phlogopite—Yellow-Brown | Zincite — Yellow, Green |
| Esperite—Yellow | Powellite—Yellow | Zircon — Golden Yellow |

*Best under long wave. All others under short wave.

FOR

Printing

WITH THE LOOK OF *Distinction* *

WILCOX

Office Supplies & Equipment

6 MAIN ST. • HAMBURG, N. J. 07419 • 827-7474

"Your Neighbor"



HARDYSTON NATIONAL BANK OF HAMBURG

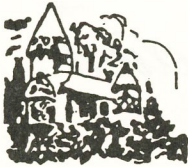
Complete Banking Services

HAMBURG — OGDENSBURG — STOCKHOLM — LAFAYETTE

Member F.D.I.C.

Federal Reserve System

For Kids From "Six to Sixty" Visit



The Gingerbread Castle

Hamburg, New Jersey

- GUIDED TOURS
 - MINIATURE TRAIN RIDE
 - AIR CONDITIONED RESTAURANT
 - FREE PICNIC GROUNDS
 - FREE PARKING

We Suggest — Bring Your Camera

MINERALS FOUND ONLY AT FRANKLIN/OGDENSBURG, NEW JERSEY

Antimonian Groutite	Hancockite	Roeppeite
Barian Anorthoclase	Hardystonite	Roweite
Barian Microcline	Hendricksite	Schallerite
	Hodgkinsonite	Torreyite
	Holdenite	Yeatmanite
Chlorophoenicite	Larsenite	
Clinohedrite	Leucophoenicite	
Esperite	Loseyite	Zinc Alleghanyite
Franklinite	Mcgovernite	Zinc Fosterite
Gageite	Magnesium	Zinc Manganese Brunsvigite
Glaucochroite	Chlorophoenicite	Zinc Manganese Clinohumite
	Mooreite	Zinc Manganese Penninite
		Zinc Sonolite

Anyone having unusual mineral specimens of the Franklin-Sterling Area and would be interested in exhibiting them at the Franklin Mineral Museum, on a loan basis, or permanent basis, we would enjoy hearing from you.

Just off the Press

A GUIDE TO MINERAL COLLECTING AT FRANKLIN AND STERLING HILL, NEW JERSEY

by

 **Ervan F. Kushner** 

Includes History of the Mining Industry at Franklin, The Rock Formations, Theories Relating to the Origin of the Orebodies, The Minerals (over 250 are discussed) at Franklin and Sterling Hill, Fluorescence complete Glossary. Over 70 photographs and a large Folding Map.

"A MUST for the Franklin Mineral Collector"

Available at

FRANKLIN-KIWANIS MUSEUM

EVANS ROAD

GERSTMANN MUSEUM

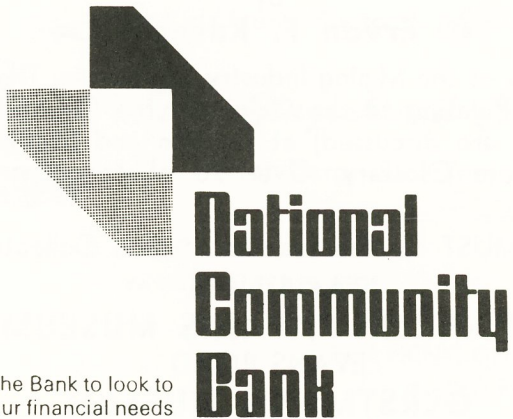
WALSH ROAD

FRANKLIN-OGDENSBURG

MINERAL SOCIETY BOOTH



Compliments of
Plastoid Corporation
Hamburg, N. J.



The Bank to look to
for all your financial needs

Member F.D.I.C.



MINERAL DEALERS ATTENDING THE 1974 FRANKLIN-STERLING MINERAL SHOW

1. MINERAL SHOWCASE, 21 Irwin Ave., Middletown, New York 10940
2. CRYSTAL GEMS CO., 1440 Willowbrook Mall, Wayne, New Jersey 07470
3. GILMAN'S AT THE CAVE, Hellertown, Pa. 18050
4. MERKER'S MINERALS, 416 Bowen Street, Dayton, Ohio 45414
5. THE SILVER PICK, 1682 St. John's Ave., Merrick, N. Y. 11566
6. HORN MINERALS, 263 No. Country Road, Smithtown, N. Y. 11787
7. ELRICH MINERALS, 12 Leystra Lane, Wayne, N. J. 07470
8. AKE L. ANDERSON, 31 Prospect Street, Huntington, N. Y. 11743
9. BALTIC AMBER, 140 Whispering Sands Dr., Sarasota, Florida 33581
10. BASKIN AND SONS, INC., 732 Union Avenue, Middlesex, N. J. 08846
11. FRED'S GEM DEN, 136 Lounsbury Road, Ridgefield, Conn. 06877
12. RAINBOW GEMCRAFT, 12511 103 Ave., Richmond Hill, N. Y. 11419
13. STANLEY LESNIK, 1454 Odell Street, Wantagh, N. Y. 11793
14. SY SCHWEITZER & CO., INC., P.O. Box 431, E. Greenwich, R. I. 02818
15. MARTIN MINERALS, 201 Bywater, Tampa, Florida 33615
16. HOWARD MINERALS, 2775 Bedford Avenue, Brooklyn, N. Y. 11210
17. 1766 HOUSE, Route 146, Uxbridge, Mass. 01569

Dark Room A — ULTRA-VIOLET PRODUCTS, INC., 5100 Walnut Grove Ave.,
San Gabriel, Calif. 91778

Dark Room B — RAYTECH INDUSTRIES, INC., Stafford Industrial Park, P.O.
Box 84, Stafford Springs, Conn. 06076

Room C — AUSTRALIAN OPALS, 98 Gordon Road, Willowdale, Ont., Canada

Room C — HARRY'S WIRECRAFT, 23 Hi-Way & Shores Trailer Park, Ellenton,
Florida 33532



The Governor Haines

Built 1800

Continental Cuisine — Businessmen's Lunches
Candlelight Cocktail Lounge

SMORGASBORD EVERY SUNDAY*

Eat to your heart's content. Over 50 delicious gourmet dishes,
from shrimp to prime ribs.

From 3:00 to 9:30 P.M.

Catering — Banquet Facilities

Daily Luncheon 12 - 3 P.M.

Dinner 5 P.M. to 11 P.M.

Sundays 3 to 11 P.M.

Sats. 5 to 12 P.M.

Closed Tuesdays

Route 23

Hamburg, N. J.

(201) 827-2212

* Highly Recommended



Compliments of

AMES RUBBER CORP.

Hamburg, New Jersey





THE ZINC MINER

Dedicated to the memory of the men who worked in the world famous Franklin and Sterling mines. Dedicated May 7, 1972.

This statue, mounted on a concrete base, that was used for a hoist that drew crude ore from the Parker Shaft, was the work of Sculptor Jarvis Boone. It depicts the miner of early days, wearing a checked flannel shirt, heavy underwear to combat the coldness of the mine, he wears boots because of the constant presence of water in the mines. On his head he wears the original "hard hat" with a candle for illumination. In his right hand he carries a sledge hammer and drill bit. In his left hand is his lunch bucket which sustained him for the day's work in the mine.

The statue, paid for by public contributions, stands on the lawn outside the Franklin Mineral Museum, facing the visitors as they walk to the museum entrance. He also faces the setting sun, symbolical of the end of the day and the end of mining in Franklin.



The MORRIS COUNTY
Savings Bank

SPARTA OFFICE

41 Sparta Avenue

729-6104

Open Saturdays from 9:00 to Noon

Member Federal Deposit Insurance Corporation

Compliments of . . .

Sussex Redi-Mix

Concrete & Concrete Products

Quality Concrete with Quality Service

Radio Dispatched Trucks



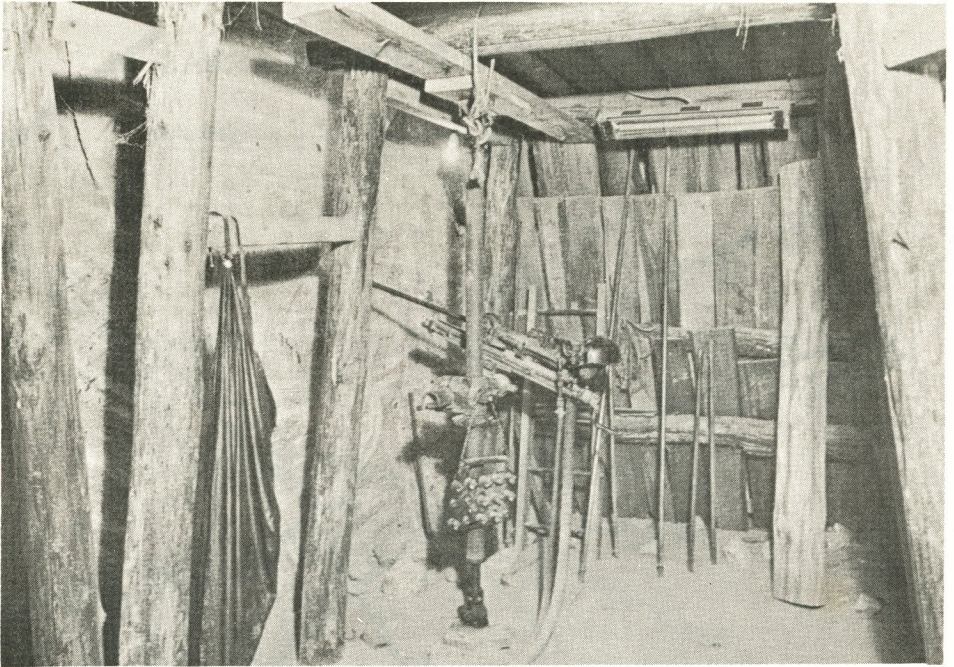
Semi-Automated Plant

Open Six Days a Week

Bob Mankovich

Route 23, Sussex, New Jersey

Telephone: 875-3124



THE MUSEUM, MINE REPLICA AND BUCKWHEAT DUMP

The Kiwanis Club has established the Mineral Museum and Mine Replica as a permanent display of the mineralogy and mining history of the area.

The Museum is operated by the Franklin Mineral Museum, Inc. and contains permanent and loaned collections of unusual interest. It also houses a spectacular display of fluorescent minerals whose brilliant colors may be viewed under Ultra-Violet light. The Replica Mine, located in the original Engine House, which used to hoist ore from the Open Cut, simulates actual mining operations in the Franklin Mine.

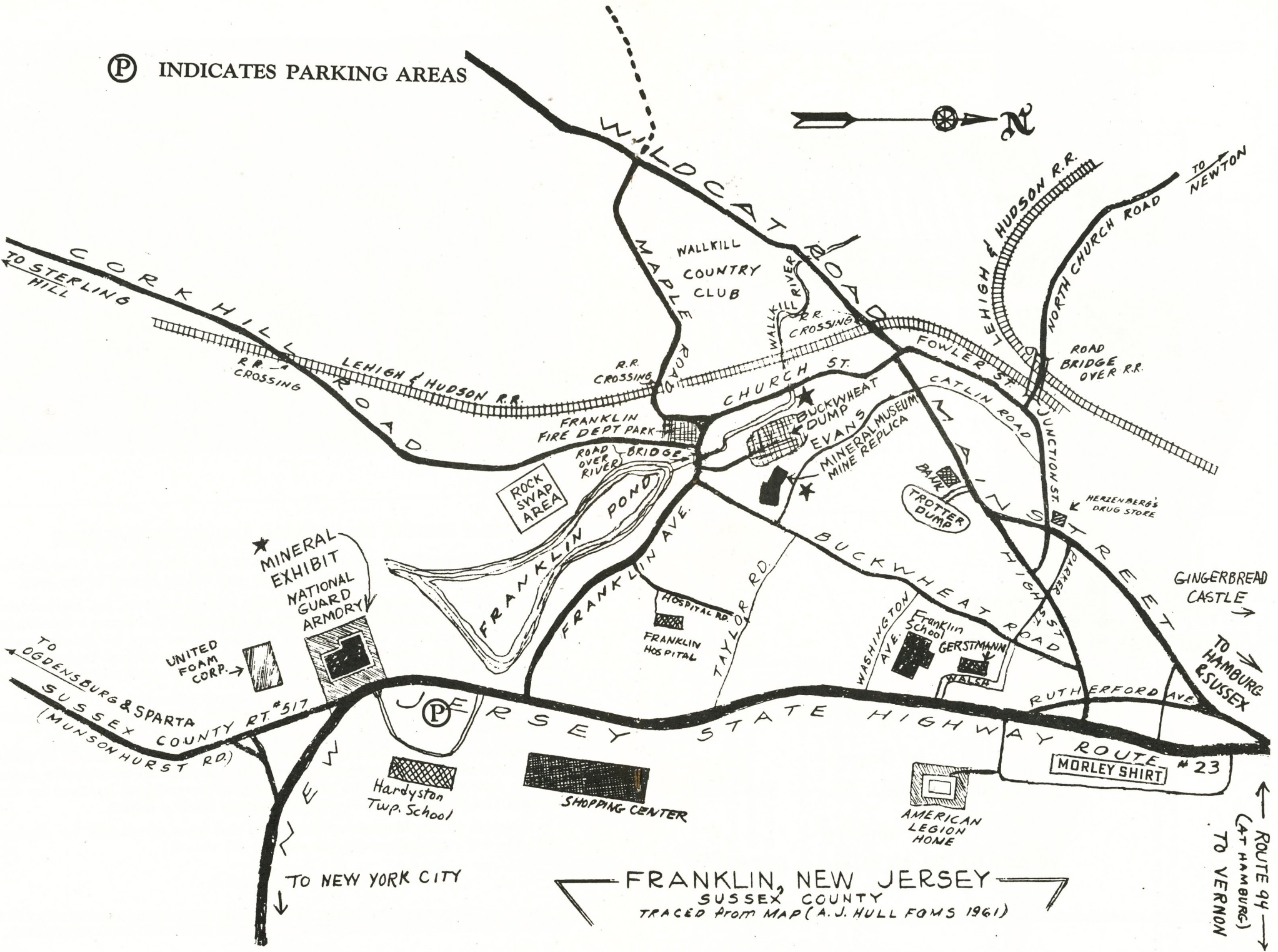
Operation of the Buckwheat Dump has been turned over to the Museum Corporation by the Boro of Franklin under a three year lease.

Admission fees to the Museum are kept at a minimum and help to cover the cost of staffing and operation. Profit from the sale of merchandise makes up the operating deficit. The annual mortgage commitment is raised by the Kiwanis Club through revenues from the annual Mineral Exhibit.

Trustees of the Museum welcome gifts and loans of minerals for display. All gifts and contributions are tax exempt.



Ⓟ INDICATES PARKING AREAS



FRANKLIN, NEW JERSEY
SUSSEX COUNTY
TRACED FROM MAP (A. J. HULL FOMS 1961)

ROUTE 94
(AT HAMBURG)
TO VERNON

Compliments of



SPARTA, N. J. 07871

(201) 729-6060

DOVER
ELECTRICAL SUPPLY CO., INC.

LIGHTING CENTERS

In Dover

50 W. BLACKWELL ST. — 366-2800

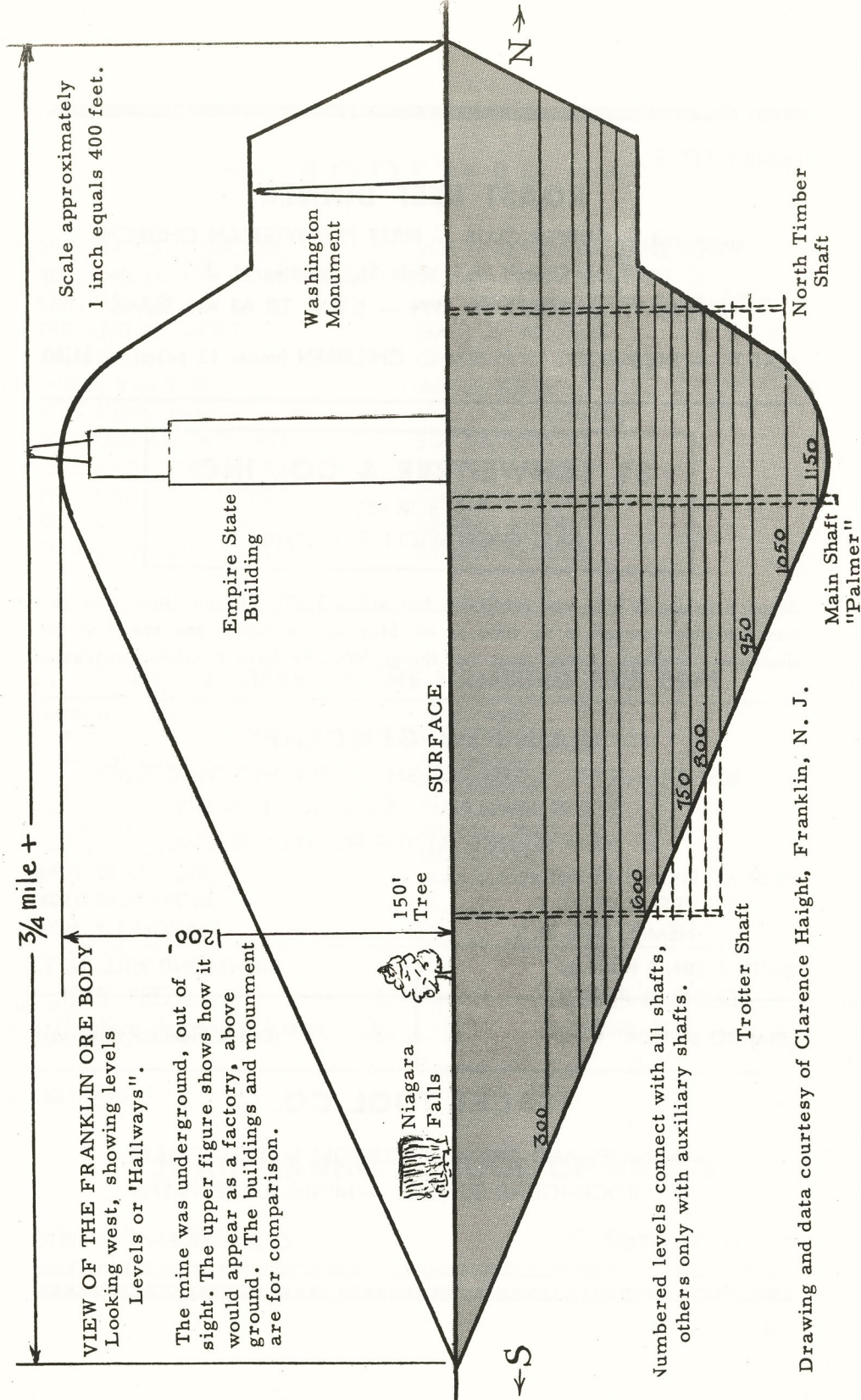
In Hamburg

99 ROUTE 23 NORTH — 827-9171

3/4 mile +

VIEW OF THE FRANKLIN ORE BODY
Looking west, showing levels
Levels or 'Hallways'.

The mine was underground, out of sight. The upper figure shows how it would appear as a factory, above ground. The buildings and monument are for comparison.



Scale approximately
1 inch equals 400 feet.

Empire State
Building

Washington
Monument

150'
Tree

Niagara
Falls

SURFACE

← S

N →

Numbered levels connect with all shafts,
others only with auxiliary shafts.

Trotter Shaft

Main Shaft
"Palmer"

North Timber
Shaft

Drawing and data courtesy of Clarence Haight, Franklin, N. J.

FAMILY STYLE . . .

ROAST BEEF DINNER

Sponsored by SUPPER CLUB — FIRST PRESBYTERIAN CHURCH

At the Church Hall, Main St., Franklin, N. J.

SATURDAY, OCTOBER 12, 1974 — 5 P.M. Till All Are Served

ADULTS — \$4.00

CHILDREN (under 12 years) — \$1.50

SY SCHWEITZER & CO., INC.

P.O. BOX 431

EAST GREENWICH, R. I. 02818

Jewelry making is fun—and profitable too with a 1,001 different items that you can assemble yourself in no time at all. Stop at our booth and see it all on display — Findings, stones, rings and things. We also have a catalog available.

RAINBOW GEMCRAFT

BEST QUALITY: . . . GEM ROUGH . . . FINISHED GEMSTONES

. . . BETTER JEWELRY . . . MINERAL SPECIMENS

AT YOUR SERVICE: AT THE FRANKLIN SHOW,

AND AT: PIKESVILLE, MD. OCT. 26-27, 1974

FREEPORT, N. Y. NOV. 16-17, 1974

HEMPSTEAD, N. Y. MARCH 1-2, 1975

BETTY & ERNIE NAPLES

RICHMOND HILL, N. Y.

(516) RO 6-6120

Leo & Fidelis Romalewski

FACET TOOL CO.

MACHINES AND FINDINGS CUSTOM MADE LAPIDARY
AND ROCKHOUND SUPPLIES — MINERAL SPECIMENS

3333 FIFTH STREET

OCEANSIDE, N. Y. 11572

BOOSTERS

BILL AND LOIS DECKER
BILL AND LOUISE COMPETIELLE
ERIC DRAKE
TED AND LIL MOTT
MIKE FREEBORN
MERYL VanORDER
AL ENTENMANN
BOB AND ANITA WHITE
PETE AND SUSANN ORA
PETE AND ELSA MEYER
BOB AND CATHY MEYER
ED AND VIRGINIA EDSALL

JOE AND NORMA JANE FOLEY
BILL AND HELEN WURST
MR. AND MRS. LOUIS GUTFLEISH
GARY E. WINTERS
CHARLES C. COLGAN
ASHER KELLEY
WILLIAM HAMMELL
SUE DAVENPORT
SOPHIA McDOLLE
HARRY J. DOREMUS
REGINA MERRITT
ERNEST A. DUCK

THE MEMBERS OF THE HAMBURG FIRE DEPT.

JACK GARDNER
LARRY BOOTH
JOHN BROWN
SID CRUM
ED EDSALL
JOHN BARCZAK
CHARLIE GARDNER
DEAN "DINO" SLIKER
CHARLIE McMICKLE

JERRY WEBB
HAROLD "JUICY" DECKER
BILL RITCHIE
PETE COOPER
CHRIS FITZPATRICK
WELDON JONES
DICK LaBARR
ALAN LaBARR

<p>JESS' PIZZA Hamburg, Newton & Sparta</p>	<p>JONES FLORIST Hamburg, N. J.</p>
--	--

827-5490

JOAN MANNO SCHOOL OF DANCE

338 MAIN STREET

OGDENSBURG, N. J.

**Franklin Minerals & Fluorescents Our Specialty — Ultra-Violet Lights
& Equipment — Mineral Specimens & Cutting Material — Lapidary &
Tumbling Equipment & Supplies — Cut Stones & Findings — Rockhound
Tools & Books**

SHOP BY MAIL — Send 50c (Refundable) for CATALOG

HORN MINERALS

263 NORTH COUNTRY ROAD (ROUTE 25A)

SMITHTOWN, L.I., NEW YORK 11787

(516) 724-8855



THE SILVER PICK

Karl R. Vossbrinck

1682 St. Johns Ave.

FR 8-9051

N. Merrick, New York 11566

AUSTRALIAN OPALS

OPALS — ROUGH OPAL — CUT STONES — OPAL SPECIMENS

OPAL JEWELRY — OPAL NOVELTIES

98 GORDON ROAD

WILLOWDALE, ONT., CANADA

PHONE (813) 922-8028

WALTER and ELISABETH RICHTER

BALTIC AMBER

**INSECT SPECIMEN, COLLECTORS ITEMS,
HANDMADE JEWELRY OF GENUINE AMBER.**

140 WHISPERING SANDS DRIVE

SARASOTA, FLORIDA 33581

Phone (203) 438-6067

Fred & Ruth Jones

FRED'S GEM DEN

Hand Wrought Jewelry — Agate Clocks — Sandstone Pictures — Cabochons
Polished Brazilian Slabs — Tumbled Stones — Colorful Petrified Wood
Miscellaneous 'Ruff' — By Appointment Please

136 LOUNSBURY ROAD

RIDGEFIELD, CONN. 06877

Write for Catalog or Phone (215) 838-8767 Open Every Day 9 a.m. to 9 p.m.

GILMAN'S

THE PLACE TO BUY: Tumbling Books, Lapidary Equipment, Gem Stones,
Jewelry Findings, and Anything Else That Fits Your Hobby.

"YOUR COMPLETE SUPPLY HOUSE"

"AT THE CAVE"

HELLERTOWN, PA. 18055

SPECIAL FOR '74 SHOW —

GEM RED CORAL BRANCHES UP TO 5" LONG

MARTIN MINERALS

TAMPA, FLORIDA

(516) HA 7-8683

CALL AFTER 6 P.M.

AKE L. ANDERSON

MINERAL AND ROCK SHOP — FINE MINERAL SPECIMENS AND ROUGH

Hours by Appointment Only

31 PROSPECT STREET

HUNTINGTON, L. I., N. Y. 11743



827-9141

390 RUTHERFORD AVE.

FRANKLIN, N. J.

Store Hours 9 - 9

Open 7 Days

DING DONG DAIRY STORE
WESTBROOK FARMS DAIRY PRODUCTS

Frozen Food — Bread — Cake — Ice Cream

ROUTE #23 & #94

HAMBURG, N. J.

PHONE 827-9980

MICHAEL F. McCONNELL, Prop.

OGDENSBURG EXXON SERVICENTER
FRONT WHEEL ALIGNMENT SERVICE — REPAIRING

13 MAIN STREET

OGDENSBURG, N. J. 07439

(201) 827-5566

ALL AMERICAN SHOPPE

Louise & Bill Kengla



ANTIQUE REPRODUCTIONS - CUSTOM LAMPS - GIFTS - FURNITURE

2 MAIN STREET

HAMBURG, N. J. 07419

The Elias Cole



ROUTE 23
COLESVILLE, N. J.

HAMBURGERS
HOT DOGS
FRENCH FRIES

SANDWICHES
&
PLATTERS

STEAK
CHICKEN
SEAFOOD

6 MILES NORTH OF SUSSEX, N.J.

N. J. ROUTE 23

TEL. (201) 875-4529

HIGH POINT MOTOR LODGE

TOTAL ELECTRIC — AIR CONDITIONED — TV — POOL

SOUTH OF HIGH POINT STATE PARK

R.F.D. No. 1

SUSSEX, N. J. 07461

Tel. 827-7670

HAMBURG HARDWARE CO.

HARDWARE—ELECTRICAL SUPPLIES

PLUMBING SUPPLIES—DE VOE PAINT

1 MAIN STREET

HAMBURG, N. J.

Telephone 827-7660

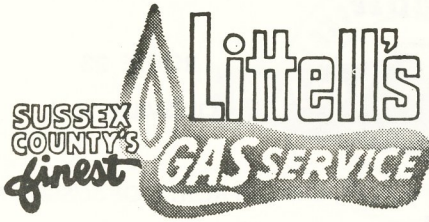


FRANKLIN PETROLEUM CO., INC.

Wholesale Distributor of Shell Products

Corner of HIGH STREET and STATE HIGHWAY

FRANKLIN, NEW JERSEY 07416



Free Estimates on
Home Heating and
Gas Air Conditioning

47 CHURCH STREET
FRANKLIN, N. J.

(201) 827-7135

Compliments of

FRANKLIN DINER

ROUTE 23

FRANKLIN, NEW JERSEY

Route 23 — Opposite A&P Shopping Center

Compliments of . . .

DAVID and PATRICIA COX

COMPLIMENTS OF . . .

NANCY and BILL KULSAR

ROSEMARY and LARRY RIZZO

Air Conditioned — Hot Water — Heat — Wall to Wall Carpeting
Continental Breakfast — TV —

ROLLING HILLS MOTEL

Clean and Comfortable as Your Own Home

875-9923

RT. 23 (Midway between Hamburg & Sussex)

SUSSEX, N. J.

(201) 827-9370

CENTER AUTO PARTS CO. INC.

PARTS & SUPPLIES

117 RUTHERFORD AVENUE

FRANKLIN, N. J. 07416

827-7147

HARDYSTON SUPPLY COMPANY

PLUMBING SUPPLIES & HEATING EQUIPMENT

ROUTE 23

HAMBURG, N. J.

Phone 875-4503

Financing Arranged

"IT MUST BE DUNN"

DUNN & DUNN, INC.

ALLEN V. DUNN

WELL DRILLING CONTRACTORS

Most Wells Drilled In A Day — Complete Water Systems

55 WALNUT STREET

SUSSEX, N. J.

THE FITZPATRICK'S WELCOME YOU TO —

THE WHIPPLETREE RESTAURANT

BREAKFAST — LUNCHEON — DINNER

SUNDAY 8:00 A.M. TO 2:00 P.M.
MONDAY 7:00 A.M. TO 2:30 P.M.
TUESDAY THRU SATURDAY 7:00 A.M. TO 7:30 P.M.

181 ROUTE 23

HAMBURG, NEW JERSEY

Compliments of . . .

CARLTON VILLAGE INC.

ROUTE 94, HAMBURG, N. J.

(201) 827-6676

Compliments of . . .

WEISS' CLOTHING STORE

Levi, Wrangler, Lee, Keds, Jane Colby,
Caper-Mates, Ship'n-Shore & Billy The Kid

FRANKLIN, N. J.



THOMAS J. WEBB

Apiaries in North and Central Jersey

R.D. 4 — BOX 391 SUSSEX, N. J. 07461

(201) 875-3889

COMPLIMENTS

ACKERSON PUMP CO.

BUNN ROAD, HAMBURG, N. J.

827-6088

LAKE MOHAWK TELEVISION & APPLIANCES

CLIFF GAMMELIN, Owner

TELEVISION: MAGNAVOX — GE — RCA — SYLVANIA — SONY

APPLIANCES: GE — WHIRLPOOL

TV Antennas Installed & Serviced

61 SPARTA AVENUE, SPARTA, N. J. 729-3141

67 WATER STREET, LAKE MOHAWK, N. J. 383-2919



NO DOUBT ABOUT IT, IT'S THE SERVICE THAT COUNTS!

SELECTED RISKS INSURANCE COMPANY

SELECT WAY INSURANCE COMPANY

BRANCHVILLE, N. J.

(201) 827-7888

FREE DELIVERY

VJ'S LIQUORS

"A Meal Without Wine Is Like A Day Without Sunshine"

VI & JOHN HELLER, Proprietors

MUNSONHURST ROAD

FRANKLIN, N. J. 07416

MARCHESE MUSIC AND ART STUDIO

Music Lessons — Piano, Organ, Guitar, Harmony — Beginners & Advanced
Commercial Art — Layout, Catalog, Packaging, Air Brush, Photo Retouching,
Testimonials and Diplomas Lettered — A Complete Service.

R.R. 1 — BOX 678A, HAMBURG, N. J.

827-5827

827-9195

HAMBURG PHARMACY

S. L. PHARMACY, INC. — STEPHEN BERGER, R.P.

ROUTE 23

HAMBURG, N. J. 07419

827-7310

MICHAEL'S JEWELERS

"Your Friendly Jeweler"

WATCHES — HALLMARK CARDS — DIAMONDS

125 MAIN STREET

FRANKLIN, N. J.

Compliments of . . .

THOM'S TAVERN

ROUTE 23 (on The Border Line)

FRANKLIN, N. J. 07416

PHONE 827-7340

NORTH COUNTRY PHARMACY, INC.

Your Authorized MINERALIGHT DEALER

Mineralights — Mineral Samples — Guide Books — Batteries & Lamps

91 MAIN STREET

FRANKLIN, N. J.

827-6500

TELRLIDGE ASSOCIATES

REALTORS

HOMES — LOTS — ACREAGE
INVESTMENT CONSULTANTS

100 ROUTE 23

HAMBURG, N. J.

ACCURATE FORMING CORPORATION

Division of **tyco** LABORATORIES, INC.

HAMBURG, NEW JERSEY 07419

PHONE: 729-3155

Opposite S & M Bank



MOHAWK LUMBER COMPANY

BUILDING MATERIALS - ALUMINUM PRODUCTS

MASON MATERIAL - CARPETING

P.O. BOX 727

SPARTA, N. J. 07871

Compliments of . . .

SPARTA PLUMBING & HEATING INC.

&

SPARTA PETROLEUM

ROUTE 15, SPARTA, N. J.

729-3888

SUSSEX SALES & SERVICE

Authorized Dealer for

Products of Ford Motor Company

FORD — MERCURY — FORD TRUCKS

(201) 875-3640

ROUTE 23, SUSSEX, NEW JERSEY

827-7220

For The Finest "On The Rocks"



B & J LIQUORS, INC.

6 MABIE STREET (Just off 23)

FRANKLIN, N. J.

Phone 827-9906

DALE'S

WHERE THE MUSIC IS ON THE HOUSE

WEDDINGS • BANQUETS • BUFFETS



RT. #23

HAMBURG, N. J.

256-1746

Open Mon. thru Sat.—10 A.M.-9:30 P.M.

CRYSTAL GEMS CO.

Minerals — Fossils — Seashells
Lapidary Equipment — Ultra Violet Lights
Jewelry — Findings — Cutting Rough
Visit Our New Showroom

Junct. RTS. 23 & 46 Eastbound — 1440 Willowbrook Mall — WAYNE, N. J.

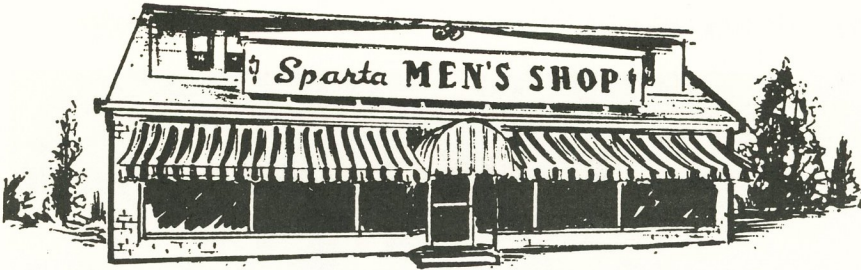
Phone 827-9790

**BARNEY'S HARDWARE
ATCHERY, INC.**

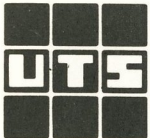
Garden Supplies — Power Equipment & Repairs
Cook & Dunn Paints — Brick & Stone

ROUTE 23

FRANKLIN, N. J. 07416



THE PLACE TO GO FOR THE BRANDS YOU KNOW



**UNITED TELEPHONE
COMPANY OF NEW JERSEY**

A Company of United Telecommunications, Inc.



PHOTO BY MICHAEL FOXSON

The 35 Foot Long Fluorescent Display Room

The Fluorescent Room is one of the spectacular sights of the Museum. Here the various ores and minerals of Franklin are seen under regular light and long and short Ultra-Violet ray, producing brilliant colors.



Prospecting for Specimens at the Buckwheat Dump

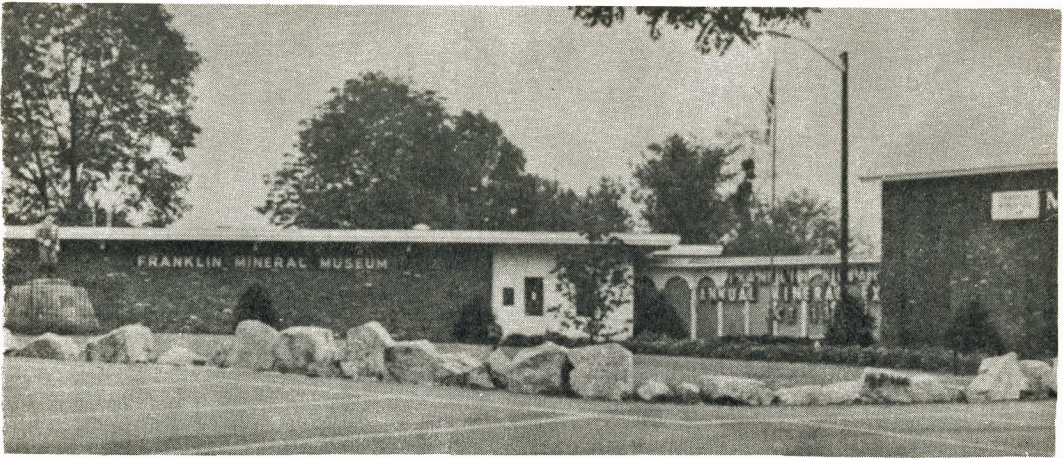


PHOTO BY ERNIE DUCK

THE FRANKLIN MINERAL MUSEUM and MINE REPLICA

SEE THE WORLD FAMOUS FRANKLIN MINERALS, MINING HISTORY, FLUORESCENT DISPLAY AND A TRUE REPLICA OF THE MINING OPERATIONS HUNDREDS OF FEET BELOW THE SURFACE OF THE EARTH.

SALES AREA: —Mineral Lights, Specimens,
Souvenirs and jewelry available.

Open April to December 15th
Daily except on Mondays

9:00 A.M. to 5:00 P.M. — Sundays 1:00 to 5:00 P.M.

Groups by appointment

Admission: Adults 1.00 - High School .50 - Grade School .25



*This is a Franklin Kiwanis sponsored,
non-profit, Community project.*

Gifts and donations to the Museum are tax deductible.

6B Evans Street, Franklin, N. J. 07416
(201) 827-3481